



Rabbit Anti-Pancreatic hormone antibody

SL8543R

Product Name:	Pancreatic hormone
Chinese Name:	胰腺激素抗体
Alias:	Pancreatic hormone precursor; Pancreatic polypeptide Y; Pancreatic prohormone; Pancreatic prohormone precursor; PNP; PP; PPY; Pancreatic prohormone; Pancreatic polypeptide; PP; INN=Obinipitide; Pancreatic hormone; PH; Pancreatic icosapeptide; PI; PAHO HUMAN.
Organism Species:	Rabbit
Clonality:	Polyclonal
React Species:	Human,Mouse,Rat,Dog,Pig,Cow,Horse,Rabbit,Sheep,
Applications:	WB=1:500-2000ELISA=1:500-1000IHC-P=1:400-800IHC-F=1:400-800IF=:100-500 (Paraffin sections need antigen repair) not yet tested in other applications. optimal dilutions/concentrations should be determined by the end user.
Molecular weight:	4kDa
Cellular localization:	Secretory protein
Form:	Lyophilized or Liquid
Concentration:	1mg/ml
immunogen:	KLH conjugated synthetic peptide derived from human Pancreatic hormone:30-65/95
Lsotype:	IgG
Purification:	affinity purified by Protein A
Storage Buffer:	0.01M TBS(pH7.4) with 1% BSA, 0.03% Proclin300 and 50% Glycerol.
Storage:	Store at -20 °C for one year. Avoid repeated freeze/thaw cycles. The lyophilized antibody is stable at room temperature for at least one month and for greater than a year when kept at -20°C. When reconstituted in sterile pH 7.4 0.01M PBS or diluent of antibody the antibody is stable for at least two weeks at 2-4 °C.
PubMed:	PubMed
Product Detail:	Pancreatic hormone is synthesized in pancreatic islets of Langerhans and acts as a regulator of pancreatic and gastrointestinal functions and may be important in the regulation of food intake. Plasma levels of this hormone have been shown to be reduced in conditions associated with increased food intake and elevated in anorexia nervosa. In

addition, infusion of this hormone in obese rodents has shown to decrease weight gain.

Function:

Pancreatic hormone is synthesized in pancreatic islets of Langerhans and acts as a regulator of pancreatic and gastrointestinal functions.

The physiological role for the icosapeptide has not yet been elucidated.

Subunit:

Belongs to the NPY family.

Subcellular Location:

Secreted.

Similarity:

Belongs to the NPY family.

SWISS:

P01298

Gene ID:

5539

Database links:

[Entrez Gene: 5539](#) Human

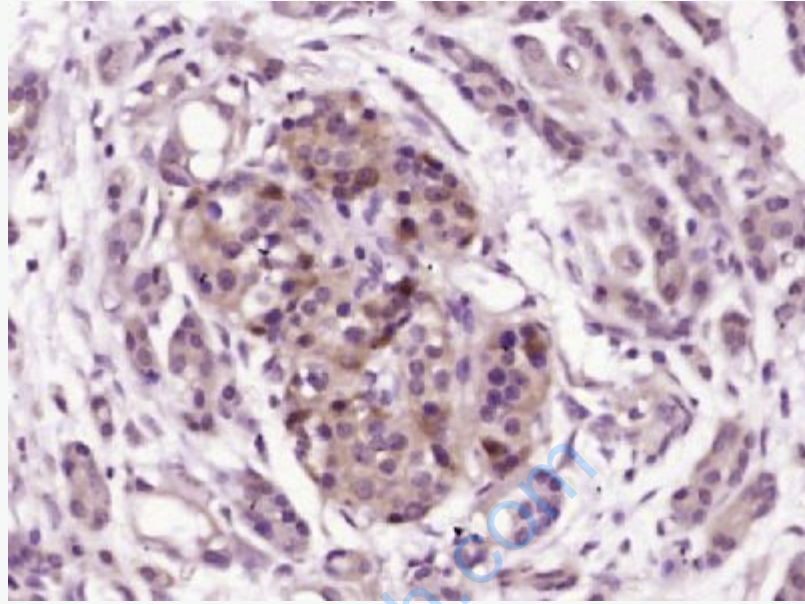
[Omim: 167780](#) Human

[SwissProt: P01298](#) Human

[Unigene: 558368](#) Human

Important Note:

This product as supplied is intended for research use only, not for use in human, therapeutic or diagnostic applications.



Picture:

Paraformaldehyde-fixed, paraffin embedded (Human pancreatic cancer); Antigen retrieval by boiling in sodium citrate buffer (pH6.0) for 15min; Block endogenous peroxidase by 3% hydrogen peroxide for 20 minutes; Blocking buffer (normal goat serum) at 37°C for 30min; Antibody incubation with (Pancreatic hormone) Polyclonal Antibody, Unconjugated (SL8543R) at 1:400 overnight at 4°C, followed by operating according to SP Kit(Rabbit) (sp-0023) instructions and DAB staining.