



Rabbit Anti-GNAI2/G protein alpha inhibitor 1 antibody

SL8556R

| | |
|-------------------------------|--|
| Product Name: | GNAI2/G protein alpha inhibitor 1 |
| Chinese Name: | G蛋白 α 抑制蛋白1抗体 |
| Alias: | G alpha i-1; G Protein alpha Inhibitor 1; Adenylate cyclase inhibiting G alpha; Gi; Gi1 protein alpha subunit; Gi2 protein alpha subunit; GIP; GNAI1; GNAI2; GNAI2B; Guanine nucleotide binding protein G(i) alpha 1 subunit; Guanine nucleotide binding protein G(i) alpha 2 subunit; GNAI2_HUMAN; Adenylate cyclase inhibiting G alpha protein; Adenylate cyclase-inhibiting G alpha protein; GNAI 2; Gnai2; GTP binding regulatory protein Gi alpha 2 chain; Guanine nucleotide binding protein G protein alpha inhibiting activity polypeptide 2; Guanine nucleotide-binding protein G(i) subunit alpha-2; H LUCA15.1; H LUCA16.1; WUGSC:H LUCA15.1; WUGSC:H LUCA16.1. |
| Organism Species: | Rabbit |
| Clonality: | Polyclonal |
| React Species: | Human,Mouse,Rat,Dog,Cow,Horse,Rabbit, |
| Applications: | ELISA=1:500-1000IHC-P=1:400-800IHC-F=1:400-800ICC=1:100-500IF=1:100-500 (Paraffin sections need antigen repair) not yet tested in other applications. optimal dilutions/concentrations should be determined by the end user. |
| Molecular weight: | 40kDa |
| Cellular localization: | cytoplasmicThe cell membrane |
| Form: | Lyophilized or Liquid |
| Concentration: | 1mg/ml |
| immunogen: | KLH conjugated synthetic peptide derived from human G Protein alpha Inhibitor 1:265-355/355 |
| Lsotype: | IgG |
| Purification: | affinity purified by Protein A |
| Storage Buffer: | 0.01M TBS(pH7.4) with 1% BSA, 0.03% Proclin300 and 50% Glycerol. |
| Storage: | Store at -20 °C for one year. Avoid repeated freeze/thaw cycles. The lyophilized antibody is stable at room temperature for at least one month and for greater than a year |

| | |
|------------------------|---|
| | when kept at -20°C. When reconstituted in sterile pH 7.4 0.01M PBS or diluent of antibody the antibody is stable for at least two weeks at 2-4 °C. |
| PubMed: | PubMed |
| Product Detail: | <p>The G protein family of signal transducers includes 5 heterotrimers, which are most clearly distinguished by their different alpha chains; they have virtually identical beta chains and similar gamma chains. G protein alpha inhibitor chains 1 and 2 are subunits of the G(i) G protein, whose role is in inhibiting adenylate cyclase activity in response to bound GTP.</p> <p>Function: Guanine nucleotide-binding proteins (G proteins) are involved as modulators or transducers in various transmembrane signaling systems. The G(i) proteins are involved in hormonal regulation of adenylate cyclase: they inhibit the cyclase in response to beta-adrenergic stimuli. May play a role in cell division. Isoform sGi2: Regulates the cell surface density of dopamine receptors DRD2 by sequestering them as an intracellular pool.</p> <p>Subunit: G proteins are composed of 3 units; alpha, beta and gamma. The alpha chain contains the guanine nucleotide binding site. Interacts with GPSM1. Interacts with RGS12 and RGS14. Interacts with UNC5B.</p> <p>Subcellular Location: Cytoplasm. Cytoplasm, cytoskeleton, centrosome. Cell membrane. Note=Localizes in the centrosomes of interphase and mitotic cells. Detected at the cleavage furrow and/or the midbody.</p> <p>Similarity: Belongs to the G-alpha family. G(i/o/t/z) subfamily.</p> <p>SWISS: P04899</p> <p>Gene ID: 2771</p> <p>Database links: Entrez Gene: 2771Human Entrez Gene: 14678Mouse Entrez Gene: 81664Rat Omim: 139360Human SwissProt: P04899Human</p> |

[SwissProt: P08752](#)Mouse

[SwissProt: P04897](#)Rat

[Unigene: 77269](#)Human

[Unigene: 196464](#)Mouse

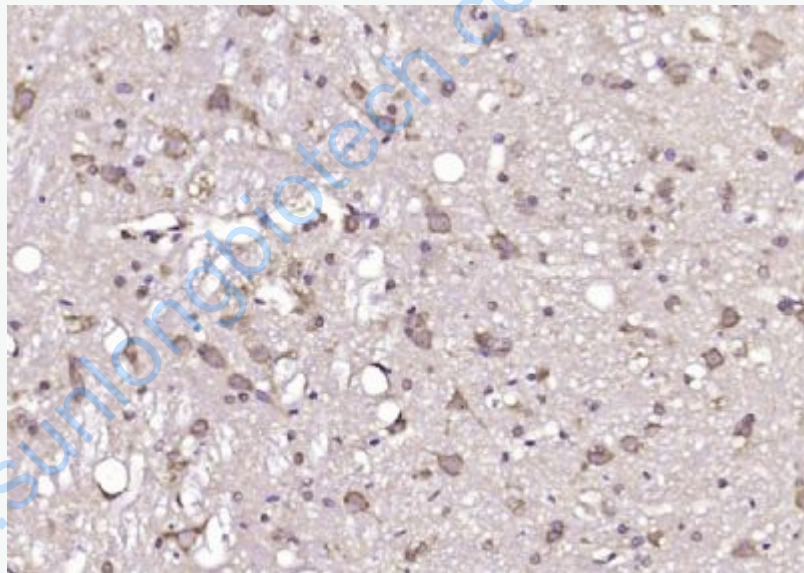
[Unigene: 3036](#)Rat

Important Note:

This product as supplied is intended for research use only, not for use in human, therapeutic or diagnostic applications.

Gα i-1/2/3

Picture:



Paraformaldehyde-fixed, paraffin embedded (rat brain); Antigen retrieval by boiling in sodium citrate buffer (pH6.0) for 15min; Block endogenous peroxidase by 3% hydrogen peroxide for 20 minutes; Blocking buffer (normal goat serum) at 37°C for 30min; Antibody incubation with (GNAI2 G protein alpha inhibitor 1) Polyclonal Antibody, Unconjugated (SL8556R) at 1:200 overnight at 4°C, followed by operating according to SP Kit(Rabbit) (sp-0023) instructions and DAB staining.