



## Rabbit Anti-Arginase 1 antibody

SL8585R

<b>Product Name:</b>	Arginase 1
<b>Chinese Name:</b>	精氨酸酶1抗体
<b>Alias:</b>	liver Arginase; ARG 1; ARG1; ARG11_HUMAN; Arginase1; Arginase liver; Arginase type I; Arginase I; ArginaseI; Arginase-1; Arginase1; Liver type arginase; Liver-type arginase; Type I arginase.
<b>文献引用</b> PubMed :	<p><b>Specific References(2)</b> SL8585R has been referenced in 2 publications.</p> <p><b>[IF=12.88]</b>Ma, Juan, et al. "A Crucial Role of Lateral Size for Graphene Oxide in Activating Macrophages and Stimulating Pro-inflammatory Responses in Cells and Animals." ACS nano (2015).<b>Mouse</b>.  <a href="#">PubMed:26389709</a></p> <p><b>[IF=3.37]</b>Huang, Ling, et al. "Enhancement of Local Bone Remodeling in Osteoporotic Rabbits by Biomimic Multilayered Structures on Ti6Al4V Implants." Journal of Biomedical Materials Research Part A (2016).<b>IHC-P;Rabbit</b>.  <a href="#">PubMed:26822259</a></p>
<b>Organism Species:</b>	Rabbit
<b>Clonality:</b>	Polyclonal
<b>React Species:</b>	Human,Mouse,Rat,Dog,Cow,Rabbit,Sheep,
<b>Applications:</b>	ELISA=1:500-1000IHC-P=1:400-800IHC-F=1:400-800Flow-Cyt=1μg /testICC=1:100-500IF=1:100-500 (Paraffin sections need antigen repair) not yet tested in other applications. optimal dilutions/concentrations should be determined by the end user.
<b>Molecular weight:</b>	35kDa
<b>Cellular localization:</b>	cytoplasmic
<b>Form:</b>	Lyophilized or Liquid
<b>Concentration:</b>	1mg/ml

<b>immunogen:</b>	KLH conjugated synthetic peptide derived from human Arginase 1:151-220/322
<b>Lsotype:</b>	IgG
<b>Purification:</b>	affinity purified by Protein A
<b>Storage Buffer:</b>	0.01M TBS(pH7.4) with 1% BSA, 0.03% Proclin300 and 50% Glycerol.
<b>Storage:</b>	Store at -20 °C for one year. Avoid repeated freeze/thaw cycles. The lyophilized antibody is stable at room temperature for at least one month and for greater than a year when kept at -20°C. When reconstituted in sterile pH 7.4 0.01M PBS or diluent of antibody the antibody is stable for at least two weeks at 2-4 °C.
<b>PubMed:</b>	<a href="#">PubMed</a>
<b>Product Detail:</b>	<p>Arginase I which is expressed almost exclusively in the liver, catalyzes the conversion of arginine to ornithine and urea . The human arginase I gene, which maps to chromosome 6q23, encodes a 322 amino acid protein. Arginase I exists as a homotrimeric protein and contains a binuclear manganese cluster. Arginase II catalyzes the same reaction as arginase I, but differs in its tissue specificity and subcellular location. Specifically, arginase II localizes to the mitochondria. Arginase II is expressed in non-hepatic tissues, with the highest levels of expression in the kidneys, but, unlike arginase I, is not expressed in liver. The human arginase II gene, which maps to chromosome 14q24.1-q24.3, encodes a 354 amino acid protein. In addition, arginase II contains a putative amino-terminal mitochondrial localization sequence.</p> <p><b>Subunit:</b> Homotrimer.</p> <p><b>Subcellular Location:</b> Cytoplasm.</p> <p><b>DISEASE:</b> Defects in ARG1 are the cause of argininemia (ARGIN) ; also known as hyperargininemia. Argininemia is a rare autosomal recessive disorder of the urea cycle. Arginine is elevated in the blood and cerebrospinal fluid, and periodic hyperammonemia occurs. Clinical manifestations include developmental delay, seizures, mental retardation, hypotonia, ataxia, progressive spastic quadriplegia.</p> <p><b>Similarity:</b> Belongs to the arginase family.</p> <p><b>SWISS:</b> P05089</p> <p><b>Gene ID:</b> 383</p> <p><b>Database links:</b> <a href="#">Entrez Gene: 513608</a> Cow</p>

[Entrez Gene: 383](#) Human

[Entrez Gene: 11846](#) Mouse

[Entrez Gene: 397115](#) Pig

[Entrez Gene: 100008814](#) Rabbit

[Entrez Gene: 29221](#) Rat

[Omim: 608313](#) Human

[SwissProt: Q2KJ64](#) Cow

[SwissProt: P05089](#) Human

[SwissProt: Q61176](#) Mouse

[SwissProt: Q95JC8](#) Pig

[SwissProt: Q95KM0](#) Rabbit

[SwissProt: P07824](#) Rat

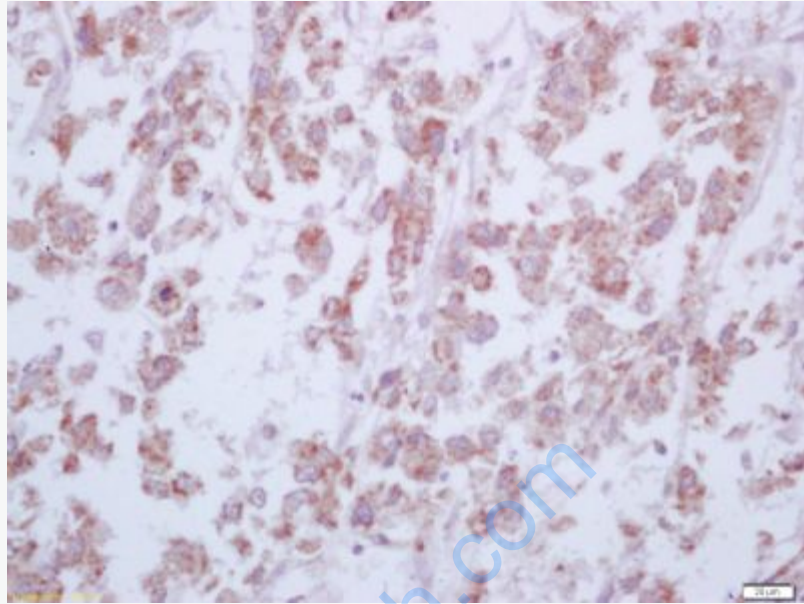
[Unigene: 440934](#) Human

[Unigene: 154144](#) Mouse

[Unigene: 9857](#) Rat

**Important Note:**

This product as supplied is intended for research use only, not for use in human, therapeutic or diagnostic applications.

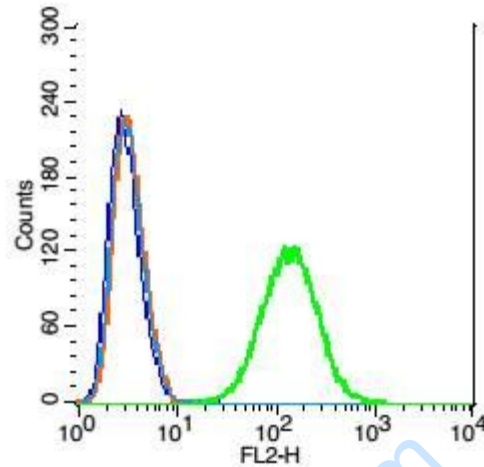


**Picture:**

Tissue/cell: human liver carcinoma; 4% Paraformaldehyde-fixed and paraffin-embedded;

Antigen retrieval: citrate buffer ( 0.01M, pH 6.0 ), Boiling bathing for 15min; Block endogenous peroxidase by 3% Hydrogen peroxide for 30min; Blocking buffer (normal goat serum,C-0005) at 37°C for 20 min;

Incubation: Anti-Arginase 1 Polyclonal Antibody, Unconjugated(SL8585R) 1:200, overnight at 4°C, followed by conjugation to the secondary antibody(SP-0023) and DAB(C-0010) staining



Blank control(blue): Hep G2 cells (fixed with 2% paraformaldehyde (10 min) , then permeabilized with 90% ice-cold methanol for 30 min on ice).

Primary Antibody:Rabbit Anti- CD59 antibody(SL8585R), Dilution: 0.2 $\mu$ g in 100  $\mu$ L 1X PBS containing 0.5% BSA;

Isotype Control Antibody: Rabbit IgG(orange) ,used under the same conditions );

Secondary Antibody: Goat anti-rabbit IgG-PE(white blue), Dilution: 1:200 in 1 X PBS containing 0.5% BSA.