



## Rabbit Anti-GIPC-2 antibody

SL8586R

<b>Product Name:</b>	GIPC-2
<b>Chinese Name:</b>	胞浆区相关蛋白GIPC2抗体
<b>Alias:</b>	GIPC 2; GIPC-2 GIPC PDZ domain containing family, member 2; GIPC2; GIPC2_HUMAN; Likely ortholog of mouse semaF cytoplasmic domain associated protein 2; PDZ domain protein GIPC2; PDZ domain-containing protein GIPC2; SemaF cytoplasmic domain associated protein 2; Semaphorin cytoplasmic domain associated protein 2; SEMCAP 2; SEMCAP2.
<b>Organism Species:</b>	Rabbit
<b>Clonality:</b>	Polyclonal
<b>React Species:</b>	Human,Mouse,Rat,Dog,Pig,Cow,Horse,Rabbit,Sheep,
<b>Applications:</b>	WB=1:500-2000ELISA=1:500-1000IHC-P=1:400-800IHC-F=1:400-800ICC=1:100-500IF=1:100-500 (Paraffin sections need antigen repair) not yet tested in other applications. optimal dilutions/concentrations should be determined by the end user.
<b>Molecular weight:</b>	34kDa
<b>Cellular localization:</b>	cytoplasmic
<b>Form:</b>	Lyophilized or Liquid
<b>Concentration:</b>	1mg/ml
<b>immunogen:</b>	KLH conjugated synthetic peptide derived from human GIPC2:201-300/315
<b>Lsotype:</b>	IgG
<b>Purification:</b>	affinity purified by Protein A
<b>Storage Buffer:</b>	0.01M TBS(pH7.4) with 1% BSA, 0.03% Proclin300 and 50% Glycerol.
<b>Storage:</b>	Store at -20 °C for one year. Avoid repeated freeze/thaw cycles. The lyophilized antibody is stable at room temperature for at least one month and for greater than a year when kept at -20°C. When reconstituted in sterile pH 7.4 0.01M PBS or diluent of antibody the antibody is stable for at least two weeks at 2-4 °C.
<b>PubMed:</b>	<a href="#">PubMed</a>
<b>Product Detail:</b>	GIPC2 is a 315 amino acid protein that localizes to the cytoplasm and contains one PDZ domain. Expressed at high levels in kidney and colon and at lower levels in adult liver, GIPC2 interacts with SEMA5A and is thought to function as a scaffold protein, possibly

modulating cell adhesion and growth factor signaling and playing a role in tumorigenesis. The gene encoding GIPC2 maps to human chromosome 1, which spans 260 million base pairs, contains over 3,000 genes and comprises nearly 8% of the human genome.

**Subunit:**

Probably interacts with SEMA5A (By similarity). .

**Subcellular Location:**

Cytoplasm.

**Tissue Specificity:**

Expressed at highest levels in ascending colon and at moderate levels in adult kidney. Expressed at low levels in adult pancreas and at very low levels in adult liver. Expression is down-regulated in several primary tumors, such as kidney, colon and rectal tumors.

**Similarity:**

Contains 1 PDZ (DHR) domain.

**SWISS:**

Q8TF65

**Gene ID:**

54810

**Database links:**

[Entrez Gene: 54810](#)Human

[Entrez Gene: 54120](#)Mouse

[Entrez Gene: 365960](#)Rat

[SwissProt: Q8TF65](#)Human

[SwissProt: Q9Z2H7](#)Mouse

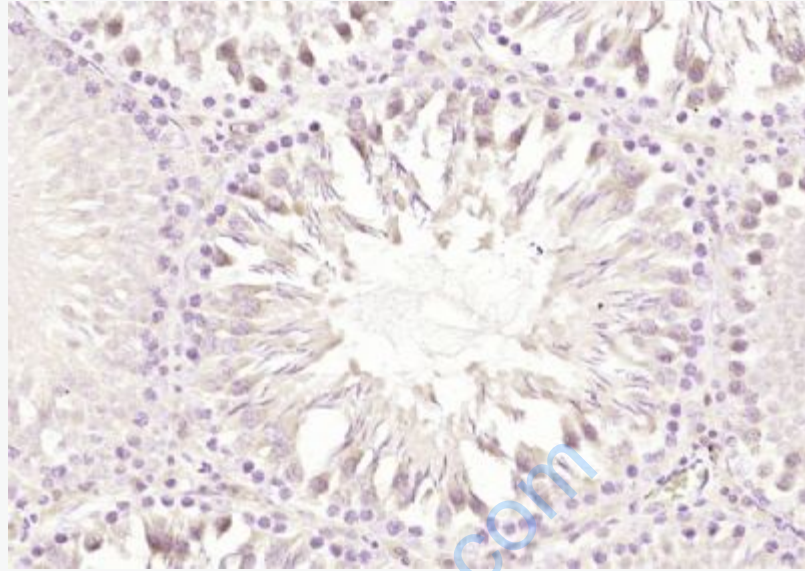
[SwissProt: Q498D9](#)Rat

[Unigene: 659356](#)Human

[Unigene: 97](#)Mouse

**Important Note:**

This product as supplied is intended for research use only, not for use in human, therapeutic or diagnostic applications.



**Picture:**

Paraformaldehyde-fixed, paraffin embedded (rat testis); Antigen retrieval by boiling in sodium citrate buffer (pH6.0) for 15min; Block endogenous peroxidase by 3% hydrogen peroxide for 20 minutes; Blocking buffer (normal goat serum) at 37°C for 30min; Antibody incubation with (GIPC-2) Polyclonal Antibody, Unconjugated (SL8586R) at 1:200 overnight at 4°C, followed by operating according to SP Kit(Rabbit) (sp-0023) instructions and DAB staining.