



Rabbit Anti-Etv5 antibody

SL8592R

Product Name:	Etv5
Chinese Name:	转录因子Ets差异基因5抗体
Alias:	ERM; Ets related protein ERM; ETS translocation variant 5; Ets variant gene 5; Ets-related protein ERM; Etv5; ETV5_HUMAN.
文献引用 PubMed :	<p>Specific References(3) SL8592R has been referenced in 3 publications.</p> <p>[IF=3.26]Mu, Hailong, et al. "PLZF-Induced Upregulation of CXCR4 Promotes Dairy Goat Male Germline Stem Cell Proliferation by Targeting Mir146a." Journal of Cellular Biochemistry (2015).Goat. PubMed:26365432</p> <p>[IF=3.12]Zheng, Liming, et al. "CD49f promotes proliferation of male dairy goat germline stem cells." Cell Proliferation (2016).Goat. PubMed:26841372</p> <p>[IF=1.06]Yuan, Quan, et al. "Human microvascular endothelial cell promotes the development of dorsal root ganglion neurons via BDNF pathway in a co-culture system." Bioscience, Biotechnology, and Biochemistry (2017): 1-8.WB;Human. PubMed:28394221</p>
Organism Species:	Rabbit
Clonality:	Polyclonal
React Species:	Human,Mouse,Rat,Dog,Pig,Cow,Horse,Sheep,
Applications:	WB=1:500-2000ELISA=1:500-1000IHC-P=1:400-800IHC-F=1:400-800ICC=1:100-500IF=1:100-500 (Paraffin sections need antigen repair) not yet tested in other applications. optimal dilutions/concentrations should be determined by the end user.
Molecular weight:	58kDa

Form:	Lyophilized or Liquid
Concentration:	1mg/ml
immunogen:	KLH conjugated synthetic peptide derived from human ERM/Etv5:301-385/510
Lsotype:	IgG
Purification:	affinity purified by Protein A
Storage Buffer:	0.01M TBS(pH7.4) with 1% BSA, 0.03% Proclin300 and 50% Glycerol.
Storage:	Store at -20 °C for one year. Avoid repeated freeze/thaw cycles. The lyophilized antibody is stable at room temperature for at least one month and for greater than a year when kept at -20°C. When reconstituted in sterile pH 7.4 0.01M PBS or diluent of antibody the antibody is stable for at least two weeks at 2-4 °C.
PubMed:	PubMed
Product Detail:	<p>Rad and Gem related GTP binding protein (REM) is a member of the RGK subfamily of Ras-like GTPases that also includes Rad, REM2 and Gem/Kir. REM is a phosphorylated protein that is highly expressed in cardiac muscle and moderately expressed in lung, kidney and skeletal muscle. REM associates with several 14-3-3 isoforms as well as with calmodulin in a calcium-dependent manner. REM mediates two distinct signal transduction pathways that regulate both cytoskeletal reorganization and voltage-gated calcium channel activity. REM decreases the current that passes through cardiac voltage-gated L-type Ca channels (Ca(V)). Overexpression of REM may result in the development of cytoplasmic processes, reorganization of the Actin cytoskeleton, reduction in focal adhesion size and an elongated or dendritic-like cell morphology.</p> <p>Function: Binds to DNA sequences containing the consensus nucleotide core sequence GGAA.</p> <p>Subcellular Location: Ubiquitous.</p> <p>Tissue Specificity: Nucleus.</p> <p>Similarity: Belongs to the ETS family. Contains 1 ETS DNA-binding domain.</p> <p>SWISS: P41161</p> <p>Gene ID: 2119</p> <p>Database links: Entrez Gene: 2119Human Entrez Gene: 104156Mouse</p>

[Entrez Gene: 303828](#)Rat

[Omin: 601600](#)Human

[SwissProt: P41161](#)Human

[SwissProt: Q9CXC9](#)Mouse

[Unigene: 43697](#)Human

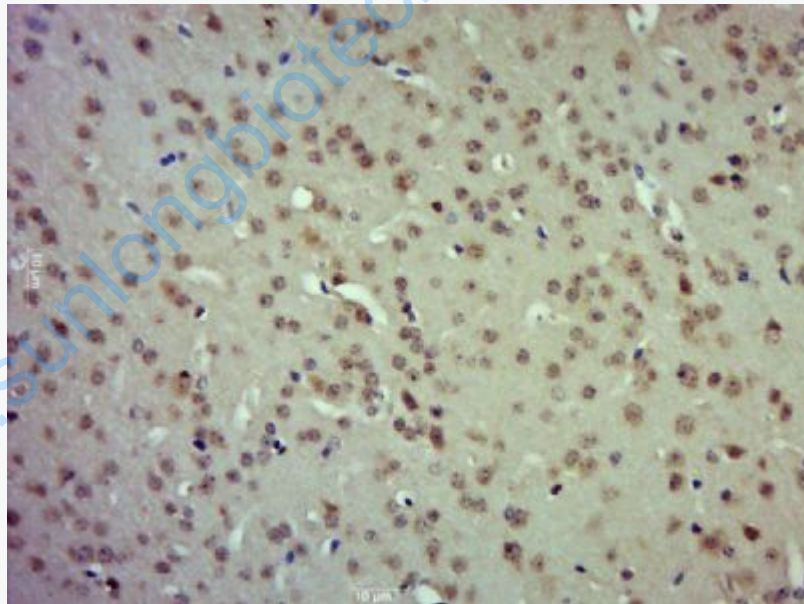
[Unigene: 155708](#)Mouse

[Unigene: 18397](#)Rat

Important Note:

This product as supplied is intended for research use only, not for use in human, therapeutic or diagnostic applications.

Picture:



Paraformaldehyde-fixed, paraffin embedded (Mouse brain); Antigen retrieval by boiling in sodium citrate buffer (pH6.0) for 15min; Block endogenous peroxidase by 3% hydrogen peroxide for 20 minutes; Blocking buffer (normal goat serum) at 37°C for 30min; Antibody incubation with (Etv5) Polyclonal Antibody, Unconjugated (SL8592R) at 1:500 overnight at 4°C, followed by a conjugated secondary (sp-0023)

	for 20 minutes and DAB staining.
--	----------------------------------

www.sunlongbiotech.com