



## Rabbit Anti-PDE3B antibody

SL8621R

<b>Product Name:</b>	PDE3B
<b>Chinese Name:</b>	环核苷酸磷酸二酯酶PDE3B抗体
<b>Alias:</b>	5"-cyclic phosphodiesterase B; Adipocyte cAMP phosphodiesterase cGMP inhibited; AI847709; cAMP Phosphodiesterase, adipocyte, cGMP-inhibited; CGI-PDE B; CGIP1; CGIPDE B; CGIPDE1; cGMP inhibited 3 5 cyclic phosphodiesterase B; CGMP inhibited cAMP phophodiesterase; cGMP-inhibited 3"; Cyclic GMP inhibited phosphodiesterase B; Cyclic GMP-inhibited phosphodiesterase B; Cyclic nucleotide phosphodiesterase; HcGIP1; HcGIP1, rat, homolog of; Pde3b; PDE3B_HUMAN; Phosphodiesterase 3B cGMP inhibited.
<b>Organism Species:</b>	Rabbit
<b>Clonality:</b>	Polyclonal
<b>React Species:</b>	Human,Mouse,Rat,Dog,Pig,Horse,Rabbit,
<b>Applications:</b>	WB=1:500-2000ELISA=1:500-1000IHC-P=1:400-800IHC-F=1:400-800ICC=1:100-500IF=1:100-500 (Paraffin sections need antigen repair) not yet tested in other applications. optimal dilutions/concentrations should be determined by the end user.
<b>Molecular weight:</b>	124kDa
<b>Cellular localization:</b>	The cell membrane
<b>Form:</b>	Lyophilized or Liquid
<b>Concentration:</b>	1mg/ml
<b>immunogen:</b>	KLH conjugated synthetic peptide derived from human PDE3B:451-550/1112
<b>Lsotype:</b>	IgG
<b>Purification:</b>	affinity purified by Protein A
<b>Storage Buffer:</b>	0.01M TBS(pH7.4) with 1% BSA, 0.03% Proclin300 and 50% Glycerol.
<b>Storage:</b>	Store at -20 °C for one year. Avoid repeated freeze/thaw cycles. The lyophilized antibody is stable at room temperature for at least one month and for greater than a year when kept at -20°C. When reconstituted in sterile pH 7.4 0.01M PBS or diluent of antibody the antibody is stable for at least two weeks at 2-4 °C.
<b>PubMed:</b>	<a href="#">PubMed</a>
<b>Product Detail:</b>	PDE3B is found in lymphocytes. The PDE7A1 (HCP1) isozyme and the PDE7A2

proteins, alternate splice products of PDE7A, are highly expressed in skeletal muscle. PDE7B is most highly expressed in pancreas. The PDE family contains proteins that serve tissue-specific roles in regulation of lipolysis, glycogenolysis, myocardial contractility, and smooth muscle relaxation.

**Function:**

Cyclic nucleotide phosphodiesterase with a dual-specificity for the second messengers cAMP and cGMP, which are key regulators of many important physiological processes. May play a role in fat metabolism.

**Subcellular Location:**

Membrane.

**Tissue Specificity:**

Abundant in adipose tissues.

**Similarity:**

Belongs to the cyclic nucleotide phosphodiesterase family. PDE3 subfamily.

**SWISS:**

Q13370

**Gene ID:**

5140

**Database links:**

[Entrez Gene: 5140](#) Human

[Entrez Gene: 18576](#) Mouse

[Entrez Gene: 29516](#) Rat

[Omim: 602047](#) Human

[SwissProt: Q13370](#) Human

[SwissProt: Q61409](#) Mouse

[SwissProt: Q8CIX5](#) Mouse

[SwissProt: Q63085](#) Rat

[Unigene: 445711](#) Human

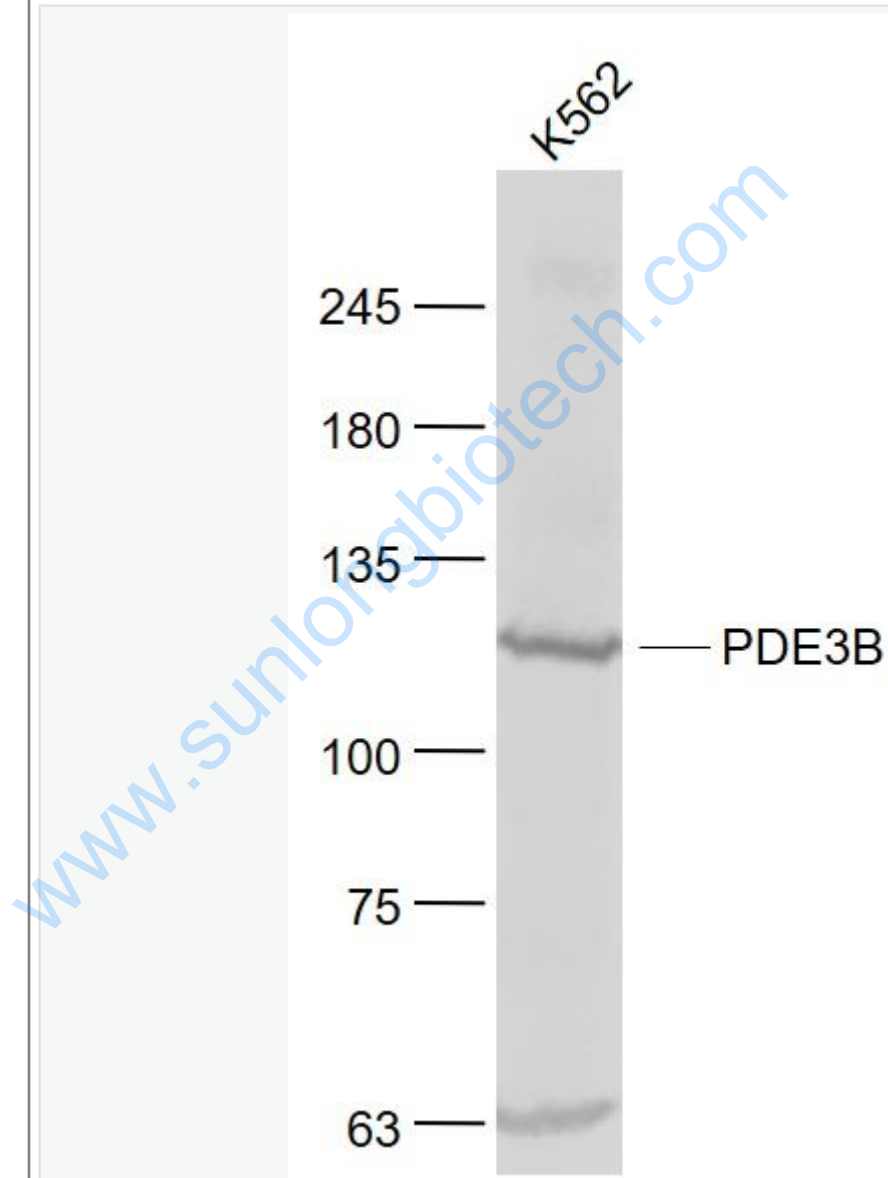
[Unigene: 430730](#) Mouse

[Unigene: 10322](#) Rat

**Important Note:**

This product as supplied is intended for research use only, not for use in human, therapeutic or diagnostic applications.

Picture:



Sample:

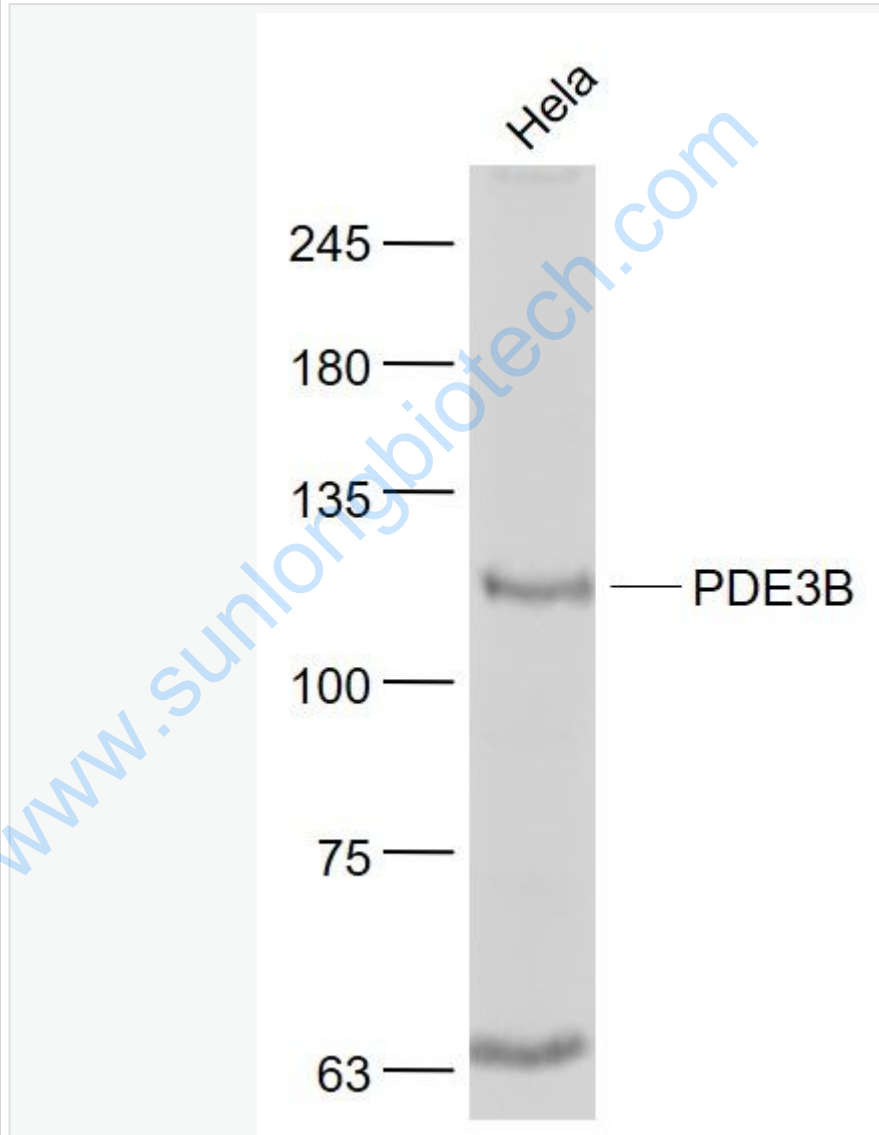
K562(Human) Cell Lysate at 30 ug

Primary: Anti- PDE3B (SL8621R) at 1/1000 dilution

Secondary: IRDye800CW Goat Anti-Rabbit IgG at 1/20000 dilution

Predicted band size: 124 kD

Observed band size: 124 kD



Sample:

HeLa(Human) Cell Lysate at 30 ug

Primary: Anti- PDE3B (SL8621R) at 1/1000 dilution

Secondary: IRDye800CW Goat Anti-Rabbit IgG at 1/20000 dilution

Predicted band size: 124 kD

Observed band size: 124 kD

[www.sunlongbiotech.com](http://www.sunlongbiotech.com)