

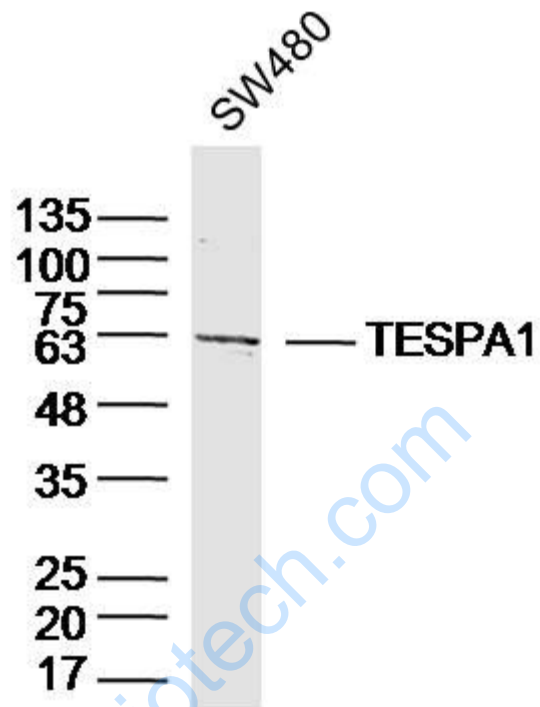


Rabbit Anti-TESPA1 antibody

SL8623R

Product Name:	TESPA1
Chinese Name:	胸腺TESPA1蛋白抗体
Alias:	HSPC257; 5830405N20Rik; TESP1_HUMAN; KIAA0748; Protein TESPA1; TESPA1 – thymocyte expressed, positive selection associated 1; TESPA1; thymocyte expressed, positive selection associated 1; Uncharacterized protein KIAA0748.
Organism Species:	Rabbit
Clonality:	Polyclonal
React Species:	Human,Rabbit,
Applications:	WB=1:500-2000ELISA=1:500-1000IHC-P=1:400-800IHC-F=1:400-800ICC=1:100-500IF=1:100-500 (Paraffin sections need antigen repair) not yet tested in other applications. optimal dilutions/concentrations should be determined by the end user.
Molecular weight:	59kDa
Cellular localization:	cytoplasmic
Form:	Lyophilized or Liquid
Concentration:	1mg/ml
immunogen:	KLH conjugated synthetic peptide derived from human TESPA1:231-330/521
Lsotype:	IgG
Purification:	affinity purified by Protein A
Storage Buffer:	0.01M TBS(pH7.4) with 1% BSA, 0.03% Proclin300 and 50% Glycerol.
Storage:	Store at -20 °C for one year. Avoid repeated freeze/thaw cycles. The lyophilized antibody is stable at room temperature for at least one month and for greater than a year when kept at -20°C. When reconstituted in sterile pH 7.4 0.01M PBS or diluent of antibody the antibody is stable for at least two weeks at 2-4 °C.
PubMed:	PubMed
Product Detail:	

Picture:



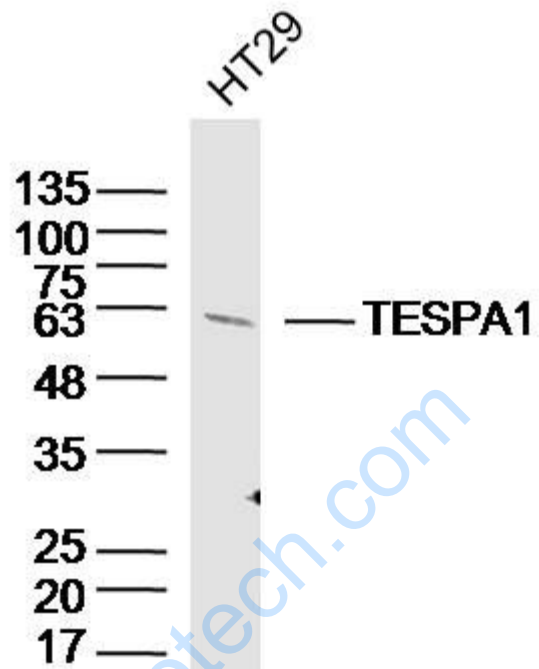
Sample: SW480 Cell (Human) Lysate at 30 ug

Primary: Anti-TESPA1 (SL8623R) at 1/300 dilution

Secondary: IRDye800CW Goat Anti-Rabbit IgG at 1/20000 dilution

Predicted band size: 59kD

Observed band size: 61kD



Sample: HT29 Cell (Human) Lysate at 30 ug

Primary: Anti-TESPA1 (SL8623R) at 1/300 dilution

Secondary: IRDye800CW Goat Anti-Rabbit IgG at 1/20000 dilution

Predicted band size: 59kD

Observed band size: 60kD