



## Rabbit Anti-TRXRD2/SELZ antibody

SL8628R

<b>Product Name:</b>	TRXRD2/SELZ
<b>Chinese Name:</b>	硒蛋白Z抗体
<b>Alias:</b>	mitochondrial; selenoprotein Z; SELZ; Thioredoxin reductase 2; Thioredoxin reductase 2 mitochondrial; thioredoxin reductase 3; thioredoxin reductase beta; Thioredoxin reductase TR3; TR 3; TR; TR beta; TR-beta; TR3; TRXR 2; TRXR2; TRXR2 HUMAN; TXNRD 2; Txnrd2.
<b>Organism Species:</b>	Rabbit
<b>Clonality:</b>	Polyclonal
<b>React Species:</b>	Human,Mouse,Rat,Pig,Cow,Horse,
<b>Applications:</b>	WB=1:500-2000ELISA=1:500-1000IHC-P=1:400-800IHC-F=1:400-800ICC=1:100-500IF=1:100-500 (Paraffin sections need antigen repair) not yet tested in other applications. optimal dilutions/concentrations should be determined by the end user.
<b>Molecular weight:</b>	53kDa
<b>Cellular localization:</b>	cytoplasmic
<b>Form:</b>	Lyophilized or Liquid
<b>Concentration:</b>	1mg/ml
<b>immunogen:</b>	KLH conjugated synthetic peptide derived from human SELZ:101-200/524
<b>Lsotype:</b>	IgG
<b>Purification:</b>	affinity purified by Protein A
<b>Storage Buffer:</b>	0.01M TBS(pH7.4) with 1% BSA, 0.03% Proclin300 and 50% Glycerol.
<b>Storage:</b>	Store at -20 °C for one year. Avoid repeated freeze/thaw cycles. The lyophilized antibody is stable at room temperature for at least one month and for greater than a year when kept at -20°C. When reconstituted in sterile pH 7.4 0.01M PBS or diluent of antibody the antibody is stable for at least two weeks at 2-4 °C.
<b>PubMed:</b>	<a href="#">PubMed</a>
<b>Product Detail:</b>	This gene encodes a member of the class I pyridine nucleotide-disulfide oxidoreductase family. The encoded protein is a selenocysteine-containing flavoenzyme that maintains thioredoxins in a reduced state, thereby playing a key role in regulating the cellular redox environment. Mammals have three related thioredoxin reductases. This gene

encodes a mitochondrial form important for scavenging of reactive oxygen species in mitochondria. Alternatively spliced transcript variants encoding different isoforms have been described. [provided by RefSeq, Sep 2013]

**Function:**

Maintains thioredoxin in a reduced state. Implicated in the defenses against oxidative stress. May play a role in redox-regulated cell signaling.

**Subunit:**

Homodimer.

**Subcellular Location:**

Mitochondrion.

**Tissue Specificity:**

Highly expressed in the prostate, ovary, liver, testis, uterus, colon and small intestine. Intermediate levels in brain, skeletal muscle, heart and spleen. Low levels in placenta, pancreas, thymus and peripheral blood leukocytes. According to PubMed:10608886, high levels in kidney, whereas according to PubMed:9923614, levels are low.

**Similarity:**

Belongs to the class-I pyridine nucleotide-disulfide oxidoreductase family.

**SWISS:**

Q9NNW7

**Gene ID:**

10587

**Database links:**

[Entrez Gene: 10587](#) Human

[Entrez Gene: 26462](#) Mouse

[Entrez Gene: 50551](#) Rat

[Omim: 606448](#) Human

[SwissProt: Q9NNW7](#) Human

[SwissProt: Q9JLT4](#) Mouse

[SwissProt: Q9Z0J5](#) Rat

[Unigene: 443430](#) Human

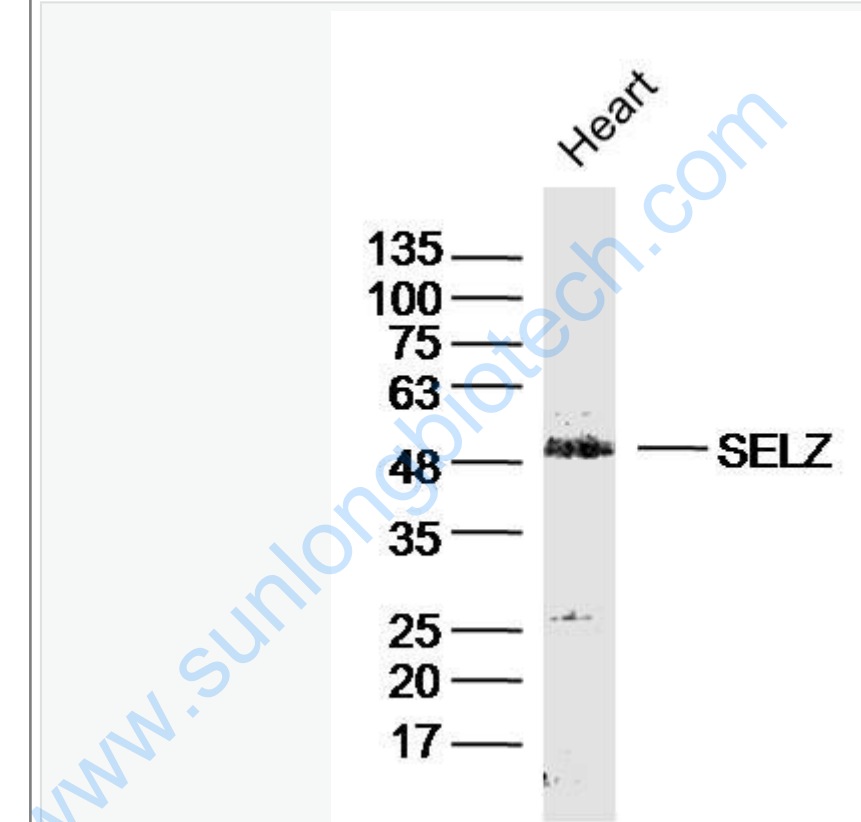
[Unigene: 390906](#) Mouse

[Unigene: 6300](#) Rat

**Important Note:**

This product as supplied is intended for research use only, not for use in human, therapeutic or diagnostic applications.

Picture:



Sample: Heart (Mouse) Lysate at 40 ug

Primary: Anti-TRXRD2/SELZ (SL8628R) at 1/300 dilution

Secondary: IRDye800CW Goat Anti-Rabbit IgG at 1/20000 dilution

Predicted band size: 53 kD

Observed band size: 50 kD