

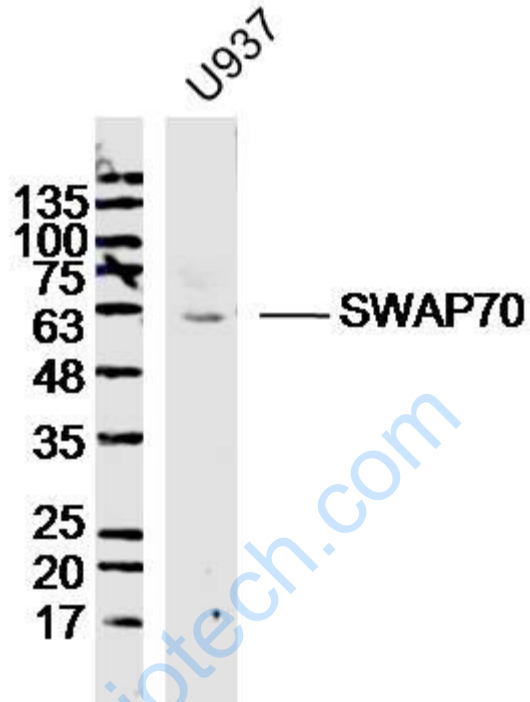


## Rabbit Anti-SWAP70 antibody

SL8630R

<b>Product Name:</b>	SWAP70
<b>Chinese Name:</b>	开关相关蛋白70抗体
<b>Alias:</b>	KIAA0640; 70kDa; AV235546; FLJ39540; HSPC321; SWA 70 protein; SWAP 70; SWAP switching B-cell complex 70kDa subunit; SWAP-70; SWAP70; Switch associated protein 70; Switch-associated protein 70; SWP70_HUMAN.
<b>Organism Species:</b>	Rabbit
<b>Clonality:</b>	Polyclonal
<b>React Species:</b>	Human,Mouse,Rat,Chicken,Dog,Pig,Cow,Horse,Rabbit,Sheep,
<b>Applications:</b>	WB=1:500-2000ELISA=1:500-1000IHC-P=1:400-800IHC-F=1:400-800ICC=1:100-500IF=1:100-500 (Paraffin sections need antigen repair) not yet tested in other applications. optimal dilutions/concentrations should be determined by the end user.
<b>Molecular weight:</b>	69kDa
<b>Cellular localization:</b>	cytoplasmicThe cell membrane
<b>Form:</b>	Lyophilized or Liquid
<b>Concentration:</b>	1mg/ml
<b>immunogen:</b>	KLH conjugated synthetic peptide derived from human SWAP70:131-230/585
<b>Lsotype:</b>	IgG
<b>Purification:</b>	affinity purified by Protein A
<b>Storage Buffer:</b>	0.01M TBS(pH7.4) with 1% BSA, 0.03% Proclin300 and 50% Glycerol.
<b>Storage:</b>	Store at -20 °C for one year. Avoid repeated freeze/thaw cycles. The lyophilized antibody is stable at room temperature for at least one month and for greater than a year when kept at -20°C. When reconstituted in sterile pH 7.4 0.01M PBS or diluent of antibody the antibody is stable for at least two weeks at 2-4 °C.
<b>PubMed:</b>	<a href="#">PubMed</a>
<b>Product Detail:</b>	

Picture:



Sample: U937 Cell (Human) Lysate at 40 ug

Primary: Anti-SWAP70(SL8630R)at 1/300 dilution

Secondary: IRDye800CW Goat Anti-Rabbit IgG at 1/20000 dilution

Predicted band size: 69kD

Observed band size: 63kD