



Rabbit Anti-Phostensin antibody

SL8635R

Product Name:	Phostensin
Chinese Name:	蛋白磷酸酶1调节亚单位18抗体
Alias:	HKMT1098; KIAA1949; PPP1R18; Protein phosphatase 1 F actin cytoskeleton targeting subunit; Protein phosphatase 1 regulatory subunit 18.
Organism Species:	Rabbit
Clonality:	Polyclonal
React Species:	Human,Mouse,Rat,Pig,
Applications:	WB=1:500-2000ELISA=1:500-1000IHC-P=1:400-800IHC-F=1:400-800ICC=1:100-500IF=1:100-500 (Paraffin sections need antigen repair) not yet tested in other applications. optimal dilutions/concentrations should be determined by the end user.
Molecular weight:	68kDa
Cellular localization:	cytoplasmic
Form:	Lyophilized or Liquid
Concentration:	1mg/ml
immunogen:	KLH conjugated synthetic peptide derived from human Phostensin:101-200/613
Lsotype:	IgG
Purification:	affinity purified by Protein A
Storage Buffer:	0.01M TBS(pH7.4) with 1% BSA, 0.03% Proclin300 and 50% Glycerol.
Storage:	Store at -20 °C for one year. Avoid repeated freeze/thaw cycles. The lyophilized antibody is stable at room temperature for at least one month and for greater than a year when kept at -20°C. When reconstituted in sterile pH 7.4 0.01M PBS or diluent of antibody the antibody is stable for at least two weeks at 2-4 °C.
PubMed:	PubMed
Product Detail:	Protein phosphatase-1 (PP1; see MIM 176875) interacts with regulatory subunits that target the enzyme to different cellular locations and change its activity toward specific substrates. Phostensin is a regulatory subunit that targets PP1 to F-actin (see MIM 102610) cytoskeleton (Kao et al., 2007 [PubMed 17374523]).[supplied by OMIM, Mar 2008]

Subunit:

Interacts with Protein phosphatase 1 (PP1).

Subcellular Location:

Cytoplasm; cytoskeleton.

SWISS:

Q6NYC8

Gene ID:

170954

Database links:

[Entrez Gene: 100051083](#) Horse

[Entrez Gene: 170954](#) Human

[Entrez Gene: 100151743](#) Pig

[Omim: 610990](#) Human

[SwissProt: Q6NYC8](#) Human

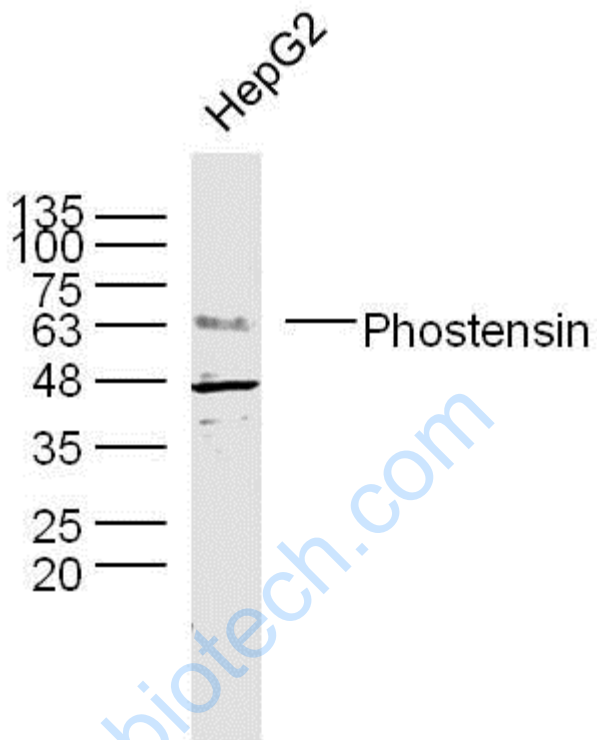
[SwissProt: Q767M0](#) Pig

[Unigene: 101150](#) Human

Important Note:

This product as supplied is intended for research use only, not for use in human, therapeutic or diagnostic applications.

Picture:



Sample:

HepG2 Cell (Human) Lysate at 30 ug

Primary: Anti- Phostensin (SL8635R) at 1/300 dilution

Secondary: IRDye800CW Goat Anti-Rabbit IgG at 1/20000 dilution

Predicted band size: 68 kD

Observed band size: 63 kD