



Rabbit Anti-SEN7 antibody

SL8698R

Product Name:	SEN7
Chinese Name:	Ubiquitin特异性蛋白酶SEN7抗体
Alias:	KIAA1707; Senp7; SENP7_HUMAN; Sentrin specific protease; Sentrin-specific protease 7; Sentrin/SUMO-specific protease SENP7; SSP2; SUMO 1 specific protease 2; SUMO specific protease; SUMO-1-specific protease 2; SUMO1/sentrin specific peptidase 7; SUSP2.
Organism Species:	Rabbit
Clonality:	Polyclonal
React Species:	Human,Mouse,Rat,Dog,Pig,Cow,Horse,Rabbit,Sheep,
Applications:	ELISA=1:500-1000IHC-P=1:400-800IHC-F=1:400-800ICC=1:100-500IF=1:100-500 (Paraffin sections need antigen repair) not yet tested in other applications. optimal dilutions/concentrations should be determined by the end user.
Molecular weight:	119kDa
Cellular localization:	The nucleusThe cell membrane
Form:	Lyophilized or Liquid
Concentration:	1mg/ml
immunogen:	KLH conjugated synthetic peptide derived from human SENP7:931-1050/1050
Lsotype:	IgG
Purification:	affinity purified by Protein A
Storage Buffer:	Preservative: 15mM Sodium Azide, Constituents: 1% BSA, 0.01M PBS, pH 7.4
Storage:	Store at -20 °C for one year. Avoid repeated freeze/thaw cycles. The lyophilized antibody is stable at room temperature for at least one month and for greater than a year when kept at -20°C. When reconstituted in sterile pH 7.4 0.01M PBS or diluent of antibody the antibody is stable for at least two weeks at 2-4 °C.
PubMed:	PubMed
Product Detail:	The reversible posttranslational modification of proteins by the addition of small ubiquitin-like SUMO proteins (see SUMO1; MIM 601912) is required for many cellular processes. SUMO-specific proteases, such as SENP7, process SUMO precursors to generate a C-terminal diglycine motif required for the conjugation reaction. They also

display isopeptidase activity for deconjugation of SUMO-conjugated substrates (Lima and Reverter, 2008 [PubMed 18799455]).[supplied by OMIM, Jun 2009]

Function:

Protease that deconjugates SUMO2 and SUMO3 from targeted proteins, but not SUMO1. Catalyzes the deconjugation of poly-SUMO2 and poly-SUMO3 chains. Has very low efficiency in processing full-length SUMO proteins to their mature forms.

Similarity:

Belongs to the peptidase C48 family.

SWISS:

Q9BQF6

Gene ID:

57337

Database links:

[Entrez Gene: 57337](#) Human

[Entrez Gene: 66315](#) Mouse

[Omim: 612846](#) Human

[SwissProt: Q9BQF6](#) Human

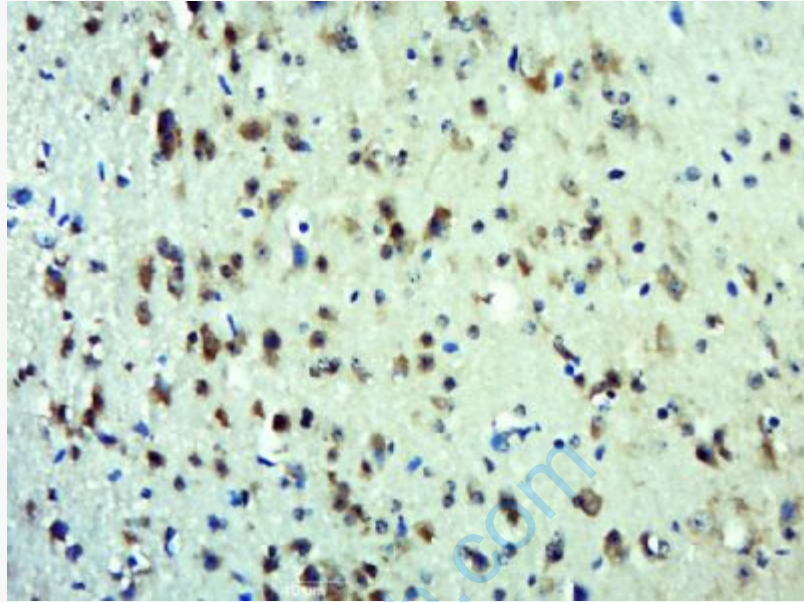
[SwissProt: Q8BUH8](#) Mouse

[Unigene: 529551](#) Human

[Unigene: 255784](#) Mouse

Important Note:

This product as supplied is intended for research use only, not for use in human, therapeutic or diagnostic applications.



Picture:

Paraformaldehyde-fixed, paraffin embedded (Mouse brain); Antigen retrieval by boiling in sodium citrate buffer (pH6.0) for 15min; Block endogenous peroxidase by 3% hydrogen peroxide for 20 minutes; Blocking buffer (normal goat serum) at 37°C for 30min; Antibody incubation with (SENP7) Polyclonal Antibody, Unconjugated (SL8698R) at 1:500 overnight at 4°C, followed by a conjugated secondary (sp-0023) for 20 minutes and DAB staining.