

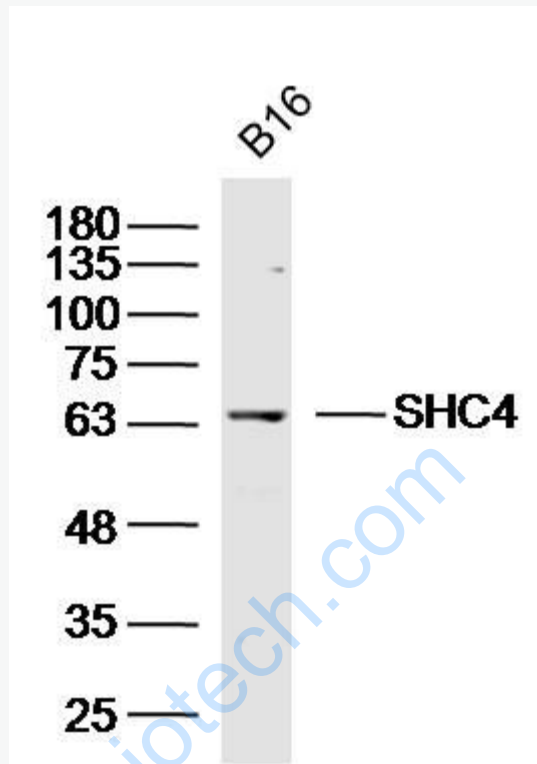


Rabbit Anti-SHC4 antibody

SL8700R

Product Name:	SHC4
Chinese Name:	SHC4蛋白抗体
Alias:	hShcD; MGC34023; Rai like protein; Rai-like protein; RaLP; SH2 domain protein C4; SHC (Src homology 2 domain containing) family member 4; SHC 4; SHC; SHC family member 4; SHC transforming protein 4; SHC transforming protein D; SHC-transforming protein 4; SHC-transforming protein D; Shc4; SHC4_HUMAN; SHCD; Src homology 2 domain containing family member 4; Src homology 2 domain containing transforming protein C4; Src homology 2 domain-containing-transforming protein C4.
Organism Species:	Rabbit
Clonality:	Polyclonal
React Species:	Human,Mouse,Rat,Dog,Horse,
Applications:	WB=1:500-2000ELISA=1:500-1000 not yet tested in other applications. optimal dilutions/concentrations should be determined by the end user.
Molecular weight:	69kDa
Cellular localization:	The cell membrane
Form:	Lyophilized or Liquid
Concentration:	1mg/ml
immunogen:	KLH conjugated synthetic peptide derived from human SHC4:451-550/630
Lsotype:	IgG
Purification:	affinity purified by Protein A
Storage Buffer:	Preservative: 15mM Sodium Azide, Constituents: 1% BSA, 0.01M PBS, pH 7.4
Storage:	Store at -20 °C for one year. Avoid repeated freeze/thaw cycles. The lyophilized antibody is stable at room temperature for at least one month and for greater than a year when kept at -20°C. When reconstituted in sterile pH 7.4 0.01M PBS or diluent of antibody the antibody is stable for at least two weeks at 2-4 °C.
PubMed:	PubMed
Product Detail:	

Picture:



Sample: B16 (Mouse) Lysate at 40 ug

Primary: Anti-SHC4(SL8700R) at 1/300 dilution

Secondary: IRDye800CW Goat Anti-Rabbit IgG at 1/20000 dilution

Predicted band size: 69kD

Observed band size: 65kD