



Rabbit Anti-SLC25A15 antibody

SL8703R

| | |
|-------------------------------|---|
| Product Name: | SLC25A15 |
| Chinese Name: | 溶质载体家族25成员15抗体 |
| Alias: | M2OM_HUMAN; Mitochondrial 2 oxoglutarate/malate carrier protein; Mitochondrial 2-oxoglutarate/malate carrier protein; OGC; OGCP; SLC20A4; SLC25A11; Solute carrier family 20 (oxoglutarate carrier) member 4; Solute carrier family 20 member 4; Solute carrier family 25 (mitochondrial carrier oxoglutarate carrier) member 11; Solute carrier family 25 member 11. |
| Organism Species: | Rabbit |
| Clonality: | Polyclonal |
| React Species: | Human,Mouse,Rat,Cow,Rabbit,Sheep,Guinea Pig, |
| Applications: | WB=1:500-2000ELISA=1:500-1000 not yet tested in other applications. optimal dilutions/concentrations should be determined by the end user. |
| Molecular weight: | 34kDa |
| Cellular localization: | The cell membrane |
| Form: | Lyophilized or Liquid |
| Concentration: | 1mg/ml |
| immunogen: | KLH conjugated synthetic peptide derived from human SLC25A15:101-200/314 |
| Lsotype: | IgG |
| Purification: | affinity purified by Protein A |
| Storage Buffer: | Preservative: 15mM Sodium Azide, Constituents: 1% BSA, 0.01M PBS, pH 7.4 |
| Storage: | Store at -20 °C for one year. Avoid repeated freeze/thaw cycles. The lyophilized antibody is stable at room temperature for at least one month and for greater than a year when kept at -20°C. When reconstituted in sterile pH 7.4 0.01M PBS or diluent of antibody the antibody is stable for at least two weeks at 2-4 °C. |
| PubMed: | PubMed |
| Product Detail: | The oxoglutarate/malate carrier transports 2-oxoglutarate across the inner membranes of mitochondria in an electroneutral exchange for malate or other dicarboxylic acids (summary by Iacobazzi et al., 1992 [PubMed 1457818]).[supplied by OMIM, Jan 2011] |

Function:

Catalyzes the transport of 2-oxoglutarate across the inner mitochondrial membrane in an electroneutral exchange for malate or other dicarboxylic acids, and plays an important role in several metabolic processes, including the malate-aspartate shuttle, the oxoglutarate/isocitrate shuttle, in gluconeogenesis from lactate, and in nitrogen metabolism.

Subcellular Location:

Mitochondrion inner membrane.

Similarity:

Belongs to the mitochondrial carrier family.
Contains 3 Solcar repeats.

SWISS:

Q02978

Gene ID:

8402

Database links:

[Entrez Gene: 8402](#) Human

[Entrez Gene: 67863](#) Mouse

[Entrez Gene: 64201](#) Rat

[Omim: 604165](#) Human

[SwissProt: Q02978](#) Human

[SwissProt: Q9CR62](#) Mouse

[SwissProt: P97700](#) Rat

[Unigene: 184877](#) Human

[Unigene: 296082](#) Mouse

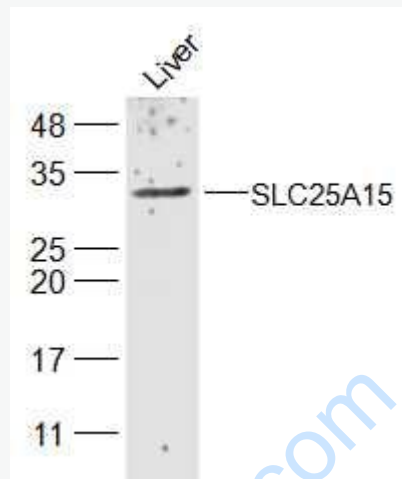
[Unigene: 466994](#) Mouse

[Unigene: 853](#) Rat

Important Note:

This product as supplied is intended for research use only, not for use in human,

therapeutic or diagnostic applications.



Picture:

Sample:

Liver (Mouse) Lysate at 40 ug

Primary: Anti-SLC25A15 (SL8703R) at 1/300 dilution

Secondary: IRDye800CW Goat Anti-Rabbit IgG at 1/20000 dilution

Predicted band size: 34 kD

Observed band size: 34 kD