



Rabbit Anti-RBKS antibody

SL8705R

Product Name:	RBKS
Chinese Name:	核糖激酶RBKS抗体
Alias:	RBSK; Ribokinase.
Organism Species:	Rabbit
Clonality:	Polyclonal
React Species:	Human,Mouse,Rat,Dog,Pig,Cow,
Applications:	WB=1:500-2000ELISA=1:500-1000IHC-P=1:400-800IHC-F=1:400-800ICC=1:100-500IF=1:100-500 (Paraffin sections need antigen repair) not yet tested in other applications. optimal dilutions/concentrations should be determined by the end user.
Molecular weight:	35kDa
Cellular localization:	The nucleuscytoplasmic
Form:	Lyophilized or Liquid
Concentration:	1mg/ml
immunogen:	KLH conjugated synthetic peptide derived from human RBKS:1-100/322
Lsotype:	IgG
Purification:	affinity purified by Protein A
Storage Buffer:	Preservative: 15mM Sodium Azide, Constituents: 1% BSA, 0.01M PBS, pH 7.4
Storage:	Store at -20 °C for one year. Avoid repeated freeze/thaw cycles. The lyophilized antibody is stable at room temperature for at least one month and for greater than a year when kept at -20°C. When reconstituted in sterile pH 7.4 0.01M PBS or diluent of antibody the antibody is stable for at least two weeks at 2-4 °C.
PubMed:	PubMed
Product Detail:	RBKS belongs to the pfkB family of carbohydrate kinases. It phosphorylates ribose to form ribose-5-phosphate in the presence of ATP and magnesium as a first step in ribose metabolism. Function: This subpathway is part of the pathway D-ribose degradation, which is itself part of Carbohydrate metabolism. View all proteins of this organism that are known to be

involved in the subpathway that synthesizes D-ribose 5-phosphate from beta-D-ribofuranose, the pathway D-ribose degradation and in Carbohydrate metabolism.

Similarity:

Belongs to the carbohydrate kinase PfkB family.

SWISS:

Q9H477

Gene ID:

64080

Database links:

[Entrez Gene: 64080](#) Human

[Omim: 611132](#) Human

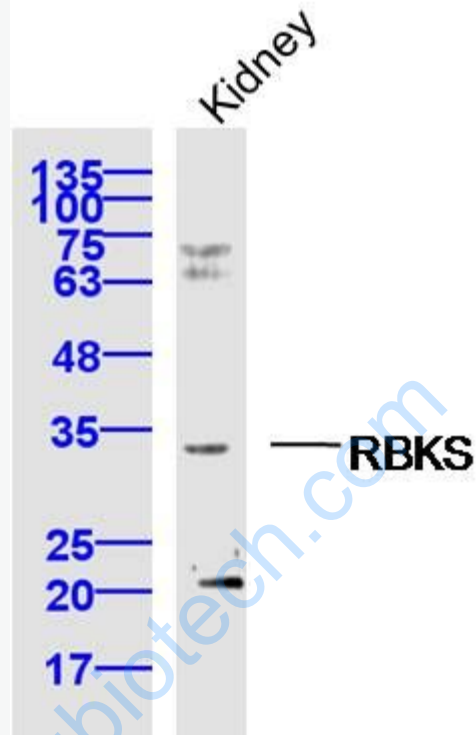
[SwissProt: Q9H477](#) Human

Important Note:

This product as supplied is intended for research use only, not for use in human, therapeutic or diagnostic applications.

www.sunlongbiotech.com

Picture:



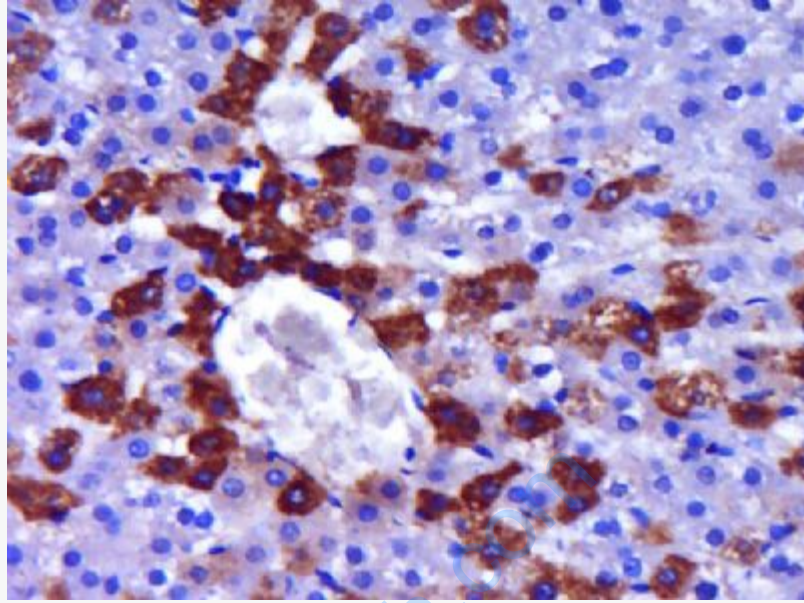
Sample: Kidney (Mouse) Lysate at 40 ug

Primary: Anti-RBKS (SL8705R) at 1/300 dilution

Secondary: IRDye800CW Goat Anti-Rabbit IgG at 1/20000 dilution

Predicted band size: 35 kD

Observed band size: 34 kD



Paraformaldehyde-fixed, paraffin embedded (Rat liver); Antigen retrieval by boiling in sodium citrate buffer (pH6.0) for 15min; Block endogenous peroxidase by 3% hydrogen peroxide for 20 minutes; Blocking buffer (normal goat serum) at 37°C for 30min; Antibody incubation with (RBKS) Polyclonal Antibody, Unconjugated (SL8705R) at 1:400 overnight at 4°C, followed by operating according to SP Kit(Rabbit) (sp-0023) instructions and DAB staining.