



Rabbit Anti-SEH1L antibody

SL8721R

| | |
|-------------------------------|--|
| Product Name: | SEH1L |
| Chinese Name: | 核Channel proteinSEH1L抗体 |
| Alias: | Nucleoporin SEH1; Nup107-160 subcomplex subunit SEH1; SEC13-like protein; SEC13L; Seh 1; SEH1-like (<i>S. cerevisiae</i>); SEH1 HUMAN; SEH1A; SEH1B; SEH1L |
| Organism Species: | Rabbit |
| Clonality: | Polyclonal |
| React Species: | Human,Mouse,Rat,Chicken,Dog,Pig,Cow,Rabbit, |
| Applications: | ELISA=1:500-1000IHC-P=1:400-800IHC-F=1:400-800ICC=1:100-500IF=1:100-500 (Paraffin sections need antigen repair) not yet tested in other applications. optimal dilutions/concentrations should be determined by the end user. |
| Molecular weight: | 40kDa |
| Cellular localization: | The nucleus |
| Form: | Lyophilized or Liquid |
| Concentration: | 1mg/ml |
| immunogen: | KLH conjugated synthetic peptide derived from human SEH1L:1-100/360 |
| Lsotype: | IgG |
| Purification: | affinity purified by Protein A |
| Storage Buffer: | 0.01M TBS(pH7.4) with 1% BSA, 0.03% Proclin300 and 50% Glycerol. |
| Storage: | Store at -20 °C for one year. Avoid repeated freeze/thaw cycles. The lyophilized antibody is stable at room temperature for at least one month and for greater than a year when kept at -20°C. When reconstituted in sterile pH 7.4 0.01M PBS or diluent of antibody the antibody is stable for at least two weeks at 2-4 °C. |
| PubMed: | PubMed |
| Product Detail: | Seh1 is a 421 amino acid protein belonging to the WD repeat Sec13 family. Localized to the nucleus, Seh1 is a component of the nuclear pore complex Nup107-160. Nuclear pore complexes control bidirectional transport of macromolecules between the cytoplasm and the nucleus. All components of the complex Nup107-160, including Seh1, localize to the kinetochores during mitosis. Seh1 is expressed as two isoforms produced by alternative splicing and contains six WD repeats. |

Function:

Component of the Nup107-160 subcomplex of the nuclear pore complex (NPC). The Nup107-160 subcomplex is required for the assembly of a functional NPC. The Nup107-160 subcomplex is also required for normal kinetochore microtubule attachment, mitotic progression and chromosome segregation. This subunit plays a role in recruitment of the Nup107-160 subcomplex to the kinetochore.

Subcellular Location:

Chromosome; centromere; kinetochore. Nucleus; nuclear pore complex.

Similarity:

Belongs to the WD repeat SEC13 family.
Contains 6 WD repeats.

SWISS:

Q96EE3

Gene ID:

81929

Database links:

[Entrez Gene: 81929](#) Human

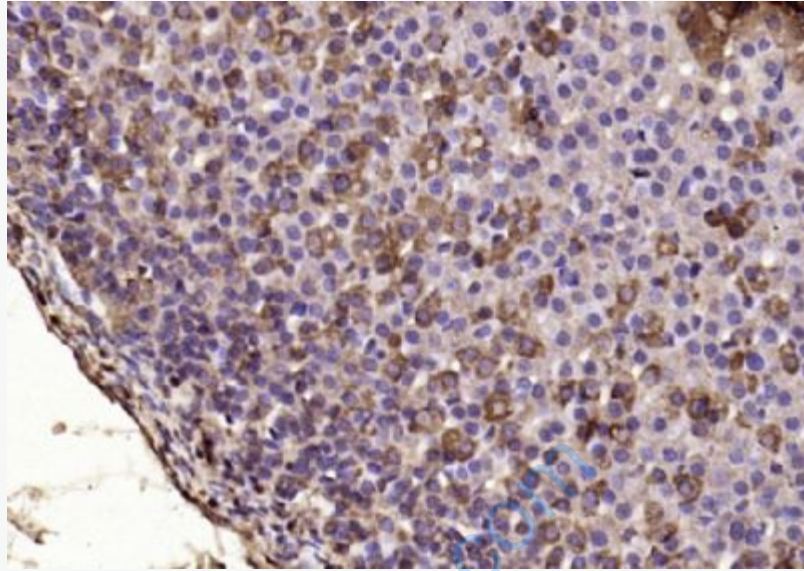
[Omim: 609263](#) Human

[SwissProt: Q96EE3](#) Human

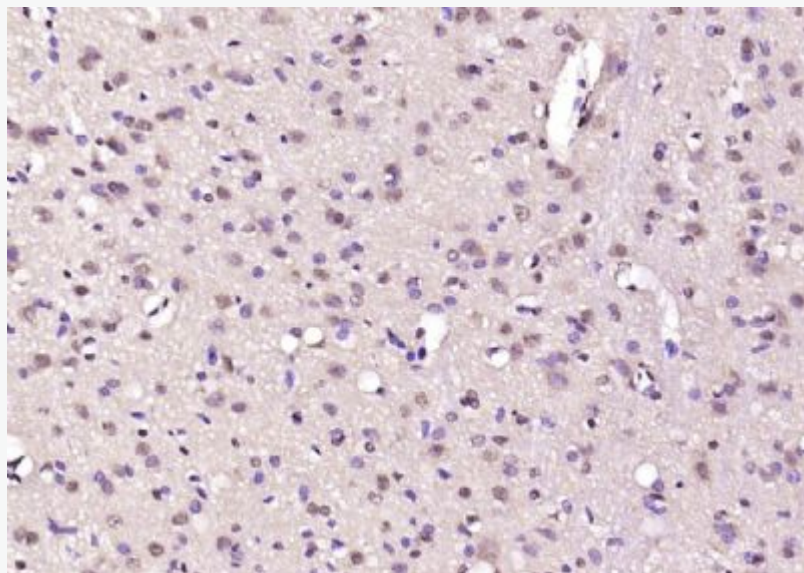
[Unigene: 301048](#) Human

Important Note:

This product as supplied is intended for research use only, not for use in human, therapeutic or diagnostic applications.



Paraformaldehyde-fixed, paraffin embedded (rat adrenal gland); Antigen retrieval by boiling in sodium citrate buffer (pH6.0) for 15min; Block endogenous peroxidase by 3% hydrogen peroxide for 20 minutes; Blocking buffer (normal goat serum) at 37°C for 30min; Antibody incubation with (SEH1L) Polyclonal Antibody, Unconjugated (SL8721R) at 1:200 overnight at 4°C, followed by operating according to SP Kit(Rabbit) (sp-0023) instructions and DAB staining.



Picture:

Paraformaldehyde-fixed, paraffin embedded (rat brain); Antigen retrieval by boiling in sodium citrate buffer (pH6.0) for 15min; Block endogenous peroxidase by 3% hydrogen peroxide for 20 minutes; Blocking buffer (normal goat serum) at 37°C for 30min; Antibody incubation with (SEH1L) Polyclonal Antibody, Unconjugated (SL8721R) at 1:200 overnight at 4°C, followed by operating according to SP Kit(Rabbit) (sp-0023) instructions and DAB staining.

www.sunlongbiotech.com