

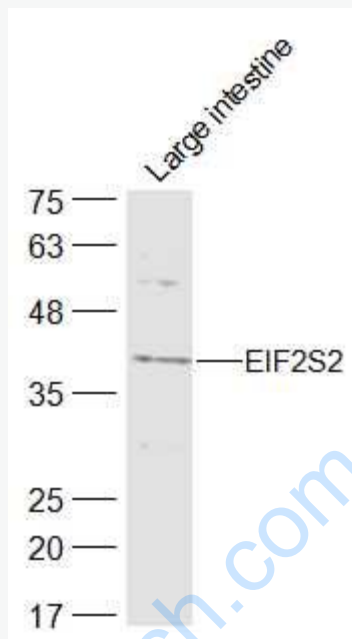


Rabbit Anti-EIF2S2 antibody

SL8723R

Product Name:	EIF2S2
Chinese Name:	真核启动因子2 β 抗体
Alias:	DKFZp686L18198; eIF 2 beta; eIF-2-beta; EIF2; EIF2B; EIF2beta; EIF2S2; Eukaryotic initiation factor 2 beta; eukaryotic initiation factor 2-beta; Eukaryotic translation initiation factor 2 beta; Eukaryotic translation initiation factor 2 subunit 2; Eukaryotic translation initiation factor 2 subunit 2 beta 38kDa; Eukaryotic translation initiation factor 2 subunit 2 beta; Eukaryotic translation initiation factor 2 subunit beta; eukaryotic translation initiation factor 2, subunit 2 beta, 38kDa; IF2B_HUMAN; MGC8508; PPP1R67; protein phosphatase 1, regulatory subunit 67.
Organism Species:	Rabbit
Clonality:	Polyclonal
React Species:	Human,Mouse,Rat,Dog,Pig,Cow,Sheep,
Applications:	WB=1:500-2000ELISA=1:500-1000IHC-P=1:400-800IHC-F=1:400-800ICC=1:100-500IF=1:100-500 (Paraffin sections need antigen repair) not yet tested in other applications. optimal dilutions/concentrations should be determined by the end user.
Molecular weight:	38kDa
Cellular localization:	cytoplasmic
Form:	Lyophilized or Liquid
Concentration:	1mg/ml
immunogen:	KLH conjugated synthetic peptide derived from human EIF2S2:2-100/333
Lsotype:	IgG
Purification:	affinity purified by Protein A
Storage Buffer:	Preservative: 15mM Sodium Azide, Constituents: 1% BSA, 0.01M PBS, pH 7.4
Storage:	Store at -20 °C for one year. Avoid repeated freeze/thaw cycles. The lyophilized antibody is stable at room temperature for at least one month and for greater than a year when kept at -20°C. When reconstituted in sterile pH 7.4 0.01M PBS or diluent of antibody the antibody is stable for at least two weeks at 2-4 °C.
PubMed:	PubMed
Product Detail:	

Picture:



Sample:

Large intestine (Mouse) Lysate at 40 ug

Primary: Anti-EIF2S2 (SL8723R) at 1/300 dilution

Secondary: IRDye800CW Goat Anti-Rabbit IgG at 1/20000 dilution

Predicted band size: 38 kD

Observed band size: 38 kD