



## Rabbit Anti-Transcription factor Sp5 antibody

SL8742R

<b>Product Name:</b>	Transcription factor Sp5
<b>Chinese Name:</b>	转录生长因子SP5抗体
<b>Alias:</b>	Sp5.
<b>Organism Species:</b>	Rabbit
<b>Clonality:</b>	Polyclonal
<b>React Species:</b>	Human,Mouse,Rat,
<b>Applications:</b>	WB=1:500-2000ELISA=1:500-1000IHC-P=1:400-800IHC-F=1:400-800ICC=1:100-500IF=1:100-500 (Paraffin sections need antigen repair) not yet tested in other applications. optimal dilutions/concentrations should be determined by the end user.
<b>Molecular weight:</b>	42kDa
<b>Cellular localization:</b>	The nucleus
<b>Form:</b>	Lyophilized or Liquid
<b>Concentration:</b>	1mg/ml
<b>immunogen:</b>	KLH conjugated synthetic peptide derived from human Transcription factor Sp5:51-150/398
<b>Lsotype:</b>	IgG
<b>Purification:</b>	affinity purified by Protein A
<b>Storage Buffer:</b>	Preservative: 15mM Sodium Azide, Constituents: 1% BSA, 0.01M PBS, pH 7.4
<b>Storage:</b>	Store at -20 °C for one year. Avoid repeated freeze/thaw cycles. The lyophilized antibody is stable at room temperature for at least one month and for greater than a year when kept at -20°C. When reconstituted in sterile pH 7.4 0.01M PBS or diluent of antibody the antibody is stable for at least two weeks at 2-4 °C.
<b>PubMed:</b>	<a href="#">PubMed</a>
<b>Product Detail:</b>	Sp5 is a member of the Sp family of zinc finger transcription factors. Like other family members, the Sp5 protein contains a Cys2His2 zinc finger DNA binding domain at the C-terminus. Elevated expression of Sp5 has been noted in several human tumors including hepatocellular carcinoma, gastric cancer and colon cancer.  <b>Function:</b>

Binds to GC boxes promoters elements. Probable transcriptional activator that has a role in the coordination of changes in transcription required to generate pattern in the developing embryo (By similarity).

**Subcellular Location:**

Nuclear.

**Similarity:**

Belongs to the Sp1 C2H2-type zinc-finger protein family.  
Contains 3 C2H2-type zinc fingers.

**SWISS:**

Q6BEB4

**Gene ID:**

389058

**Database links:**

[Entrez Gene: 389058](#) Human

[Entrez Gene: 64406](#) Mouse

[Omim: 609391](#) Human

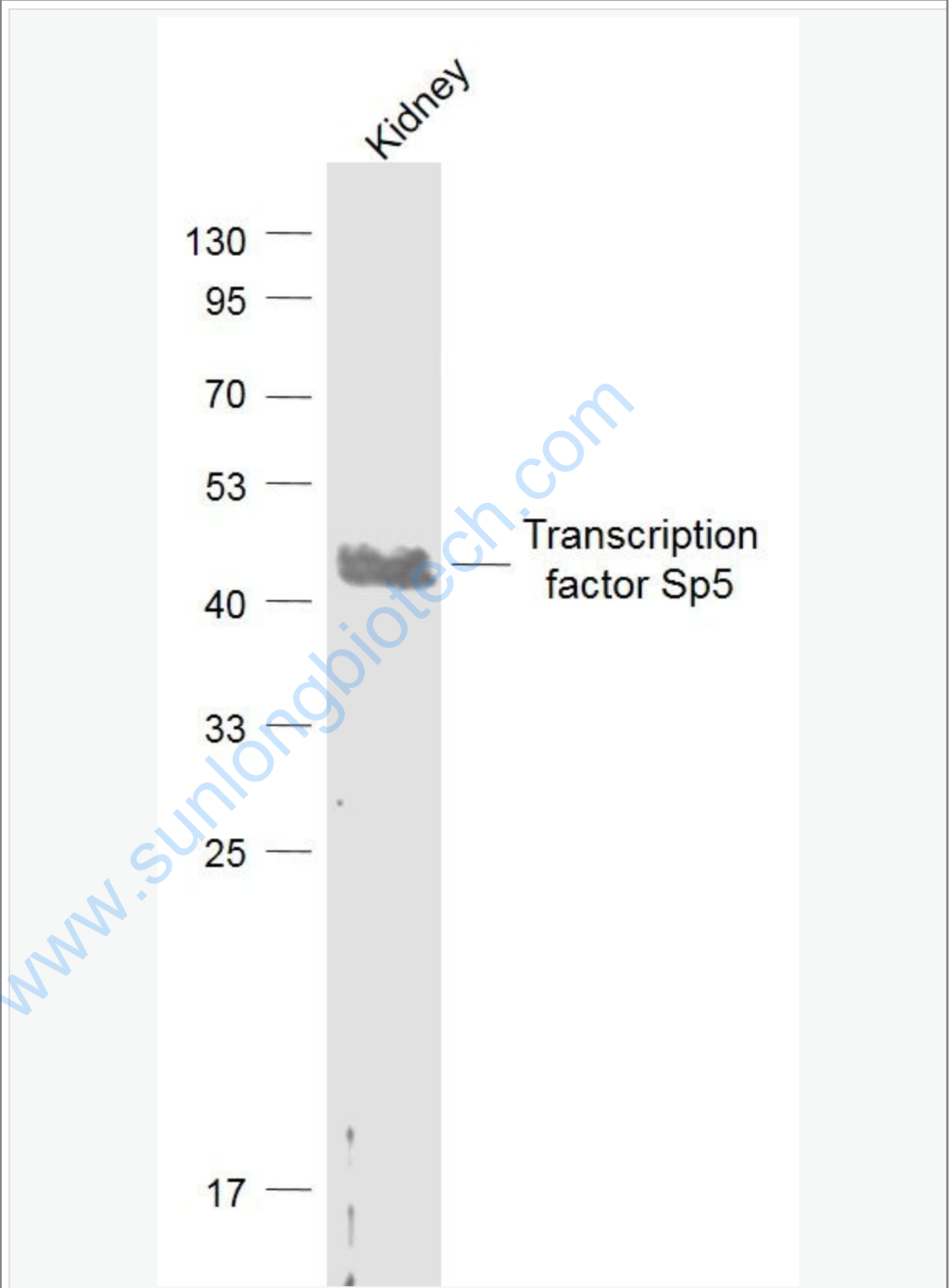
[SwissProt: Q6BEB4](#) Human

[SwissProt: Q9JHX2](#) Mouse

**Important Note:**

This product as supplied is intended for research use only, not for use in human, therapeutic or diagnostic applications.

Picture:



Sample:

Kidney (Mouse) Lysate at 40 ug

Primary: Anti-Transcription factor Sp5 (SL8742R) at 1/1000 dilution

Secondary: IRDye800CW Goat Anti-Rabbit IgG at 1/20000 dilution

Predicted band size: 42 kD

Observed band size: 42 kD

[www.sunlongbiotech.com](http://www.sunlongbiotech.com)