

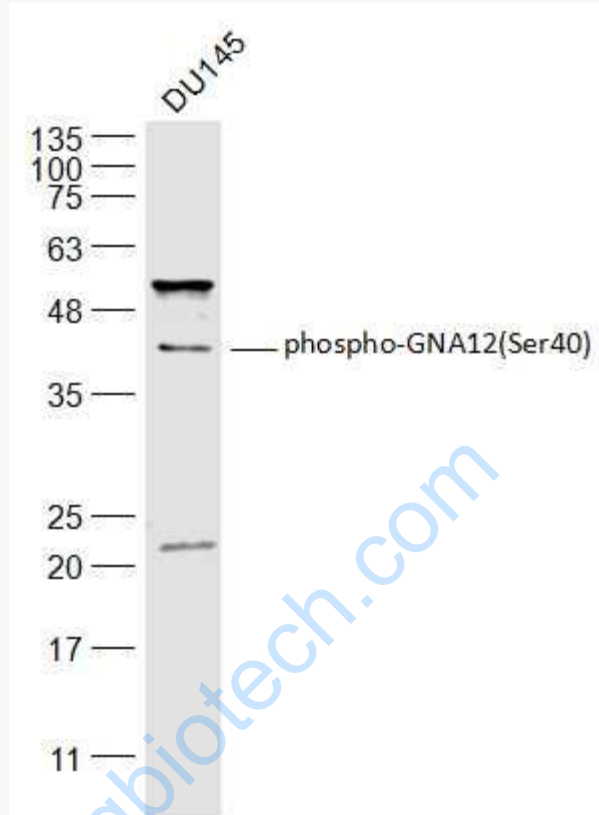


Rabbit Anti-phospho-GNA12 (Ser40) antibody

SL8812R

Product Name:	phospho-GNA12 (Ser40)
Chinese Name:	磷酸化鸟苷酸调节蛋白12抗体
Alias:	GNA12(phospho-Ser40); GNA12(phospho Ser40); GNA12(phospho S40); P-GNA12(phospho S40); G alpha 12; gep; GNA12; Guanine nucleotide binding protein alpha 12 subunit; NNX3; RMP; AI414047; AI504261; ALPHA SUBUNIT OF THE G12 FAMILY OF HETEROTRIMERIC GS; FLJ21929; G PROTEIN ALPHA 12; MGC104623; MGC130498; MGC99644; GNA12_HUMAN.
Organism Species:	Rabbit
Clonality:	Polyclonal
React Species:	Human,Mouse,Rat,Cow,Rabbit,Sheep,
Applications:	WB=1:500-2000ELISA=1:500-1000IHC-P=1:400-800IHC-F=1:400-800ICC=1:100-500IF=1:100-500 (Paraffin sections need antigen repair) not yet tested in other applications. optimal dilutions/concentrations should be determined by the end user.
Cellular localization:	cytoplasmicThe cell membrane
Form:	Lyophilized or Liquid
Concentration:	1mg/ml
immunogen:	KLH conjugated synthesised phosphopeptide derived from human GNA12 around the phosphorylation site of Ser40:RR(p-S)RD
Lsotype:	IgG
Purification:	affinity purified by Protein A
Storage Buffer:	0.01M TBS(pH7.4) with 1% BSA, 0.03% Proclin300 and 50% Glycerol.
Storage:	Store at -20 °C for one year. Avoid repeated freeze/thaw cycles. The lyophilized antibody is stable at room temperature for at least one month and for greater than a year when kept at -20°C. When reconstituted in sterile pH 7.4 0.01M PBS or diluent of antibody the antibody is stable for at least two weeks at 2-4 °C.
PubMed:	PubMed
Product Detail:	

Picture:



Sample:

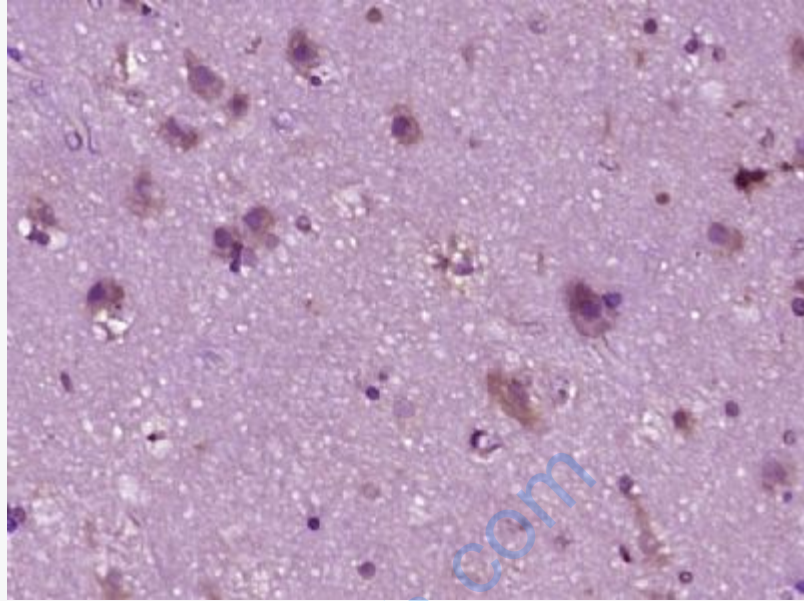
DU145(Human) Cell Lysate at 30 ug

Primary: Anti-phospho-GNA12(Ser40) (SL8812R) at 1/300 dilution

Secondary: IRDye800CW Goat Anti-Rabbit IgG at 1/20000 dilution

Predicted band size: 44 kD

Observed band size: 44 kD



Paraformaldehyde-fixed, paraffin embedded (human brain glioma); Antigen retrieval by boiling in sodium citrate buffer (pH6.0) for 15min; Block endogenous peroxidase by 3% hydrogen peroxide for 20 minutes; Blocking buffer (normal goat serum) at 37°C for 30min; Antibody incubation with (GNA12(Ser40)) Polyclonal Antibody, Unconjugated (SL8812R) at 1:400 overnight at 4°C, followed by operating according to SP Kit(Rabbit) (sp-0023) instructions and DAB staining.