



## Rabbit Anti-SMAD8 antibody

SL8844R

<b>Product Name:</b>	SMAD8
<b>Chinese Name:</b>	SMAD8蛋白抗体
<b>Alias:</b>	AI528653 ; BSP 1 ; BSP1 ; DKFZp781C1895 ; DKFZp781O1323 ; Dwarf A ; Dwf A ; DwfA ; Dwfc ; hSMAD1 ; hSmad5 ; JV 41 ; JV4 1 ; JV41 ; JV5 1 ; MAD (mothers against decapentaplegic, Drosophila) homolog 1 ; MAD (mothers against decapentaplegic, Drosophila) homolog 9 ; MAD homolog 1 ; MAD homolog 9 ; MAD homolog1 (mothers against decapentaplegic, Drosophila) ; Mad related protein 1 ; MAD, mothers against decapentaplegic homolog 9 ; MADH 1 ; Madh1 ; MADH5 ; MADH6 ; MADH9 ; Madr 1 ; MADR1 ; Mlp1 ; Mothers against decapentaplegic, drosophila, homolog of, 9 ; Mothers against DPP homolog 1 ; Mothers against DPP homolog 9 ; MusMLP ; OTTHUMP00000178565 ; OTTMUSP00000022970 ; OTTMUSP00000022971 ; OTTMUSP00000022972 ; OTTMUSP0000002324 ; OTTMUSP00000023428 ; Sma and Mad related protein 1 ; Sma- and Mad-related protein 1 ; SMAD ; SMAD family member 5 ; SMAD mothers against DPP homolog 1 Drosophila ; SMAD8 ; SMAD8A ; SMAD8B ; Spinal muscular atrophy distal with upper limb predominance ; TGF beta signaling protein 1 ; Transforming growth factor beta signaling protein 1 ; Transforming growth factor-beta signaling protein 1.
<b>Organism Species:</b>	Rabbit
<b>Clonality:</b>	Polyclonal
<b>React Species:</b>	Human,Mouse,Rat,Zebrafish,
<b>Applications:</b>	ELISA=1:500-1000IHC-P=1:400-800IHC-F=1:400-800ICC=1:100-500IF=1:100-500 (Paraffin sections need antigen repair) not yet tested in other applications. optimal dilutions/concentrations should be determined by the end user.
<b>Molecular weight:</b>	53kDa
<b>Cellular localization:</b>	The nucleuscytoplasmic
<b>Form:</b>	Lyophilized or Liquid
<b>Concentration:</b>	1mg/ml
<b>immunogen:</b>	KLH conjugated synthetic peptide derived from human SMAD8:351-450/467
<b>Lsotype:</b>	IgG

<b>Purification:</b>	affinity purified by Protein A
<b>Storage Buffer:</b>	0.01M TBS(pH7.4) with 1% BSA, 0.03% Proclin300 and 50% Glycerol.
<b>Storage:</b>	Store at -20 °C for one year. Avoid repeated freeze/thaw cycles. The lyophilized antibody is stable at room temperature for at least one month and for greater than a year when kept at -20°C. When reconstituted in sterile pH 7.4 0.01M PBS or diluent of antibody the antibody is stable for at least two weeks at 2-4 °C.
<b>PubMed:</b>	<a href="#">PubMed</a>
<b>Product Detail:</b>	<p>The protein encoded by this gene belongs to the SMAD, a family of proteins similar to the gene products of the Drosophila gene 'mothers against decapentaplegic' (Mad) and the C. elegans gene Sma. SMAD proteins are signal transducers and transcriptional modulators that mediate multiple signaling pathways. This protein mediates the signals of the bone morphogenetic proteins (BMPs), which are involved in a range of biological activities including cell growth, apoptosis, morphogenesis, development and immune responses. In response to BMP ligands, this protein can be phosphorylated and activated by the BMP receptor kinase. The phosphorylated form of this protein forms a complex with SMAD4, which is important for its function in the transcription regulation. This protein is a target for SMAD-specific E3 ubiquitin ligases, such as SMURF1 and SMURF2, and undergoes ubiquitination and proteasome-mediated degradation. Alternatively spliced transcript variants encoding the same protein have been observed. [provided by RefSeq, Jul 2008]</p> <p><b>Function:</b>  Sphingomyelin synthases synthesize sphingolipids through transfer of a phosphatidyl head group on to the primary hydroxyl of ceramide. SAMD8 is an endoplasmic reticulum (ER) transferase that has no sphingomyelin synthase activity but can convert phosphatidylethanolamine (PE) and ceramide to ceramide phosphoethanolamine (CPE) albeit with low product yield. Appears to operate as a ceramide sensor to control ceramide homeostasis in the endoplasmic reticulum rather than a converter of ceramides. Seems to be critical for the integrity of the early secretory pathway</p> <p><b>Subcellular Location:</b>  Cytoplasmic and Nuclear.</p> <p><b>Similarity:</b>  Belongs to the sphingomyelin synthase family.  Contains 1 SAM (sterile alpha motif) domain.</p> <p><b>SWISS:</b>  Q96LT4</p> <p><b>Gene ID:</b>  142891</p> <p><b>Database links:</b></p>

[Entrez Gene: 4086](#) Human

[Entrez Gene: 4090](#) Human

[Entrez Gene: 4093](#) Human

[Entrez Gene: 17125](#) Mouse

[Entrez Gene: 17129](#) Mouse

[Entrez Gene: 55994](#) Mouse

[Entrez Gene: 25671](#) Rat

[Entrez Gene: 59328](#) Rat

[Entrez Gene: 85435](#) Rat

[Olim: 601595](#) Human

[Olim: 603110](#) Human

[Olim: 603295](#) Human

[SwissProt: O15198](#) Human

[SwissProt: Q15797](#) Human

[SwissProt: Q99717](#) Human

[SwissProt: P70340](#) Mouse

[SwissProt: P97454](#) Mouse

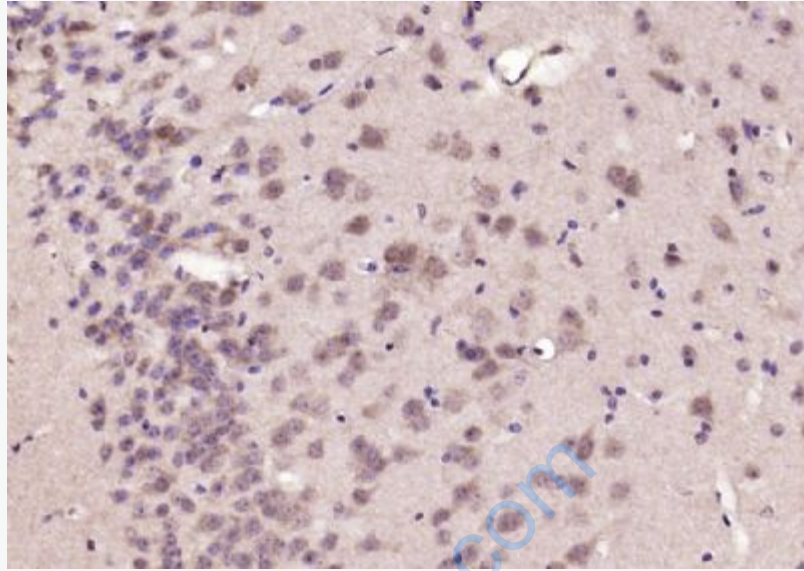
[SwissProt: Q9JIW5](#) Mouse

[SwissProt: O54835](#) Rat

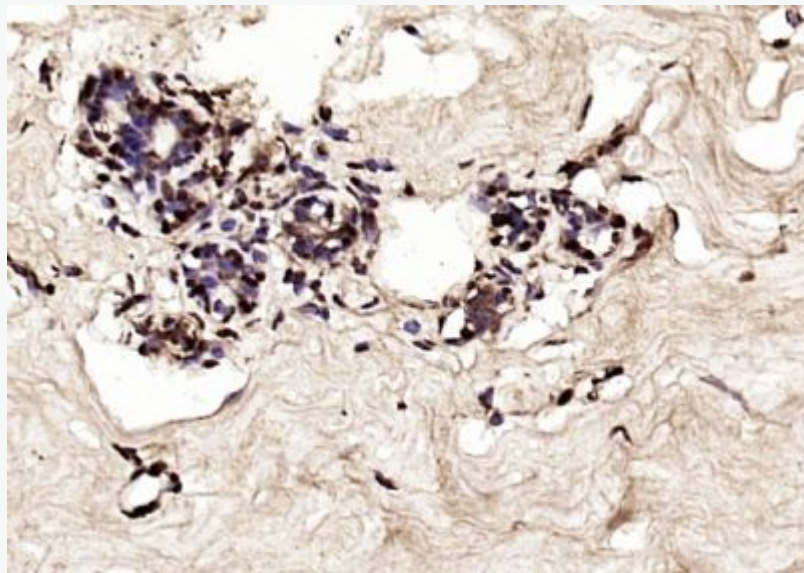
[SwissProt: P97588](#) Rat

**Important Note:**

This product as supplied is intended for research use only, not for use in human, therapeutic or diagnostic applications.

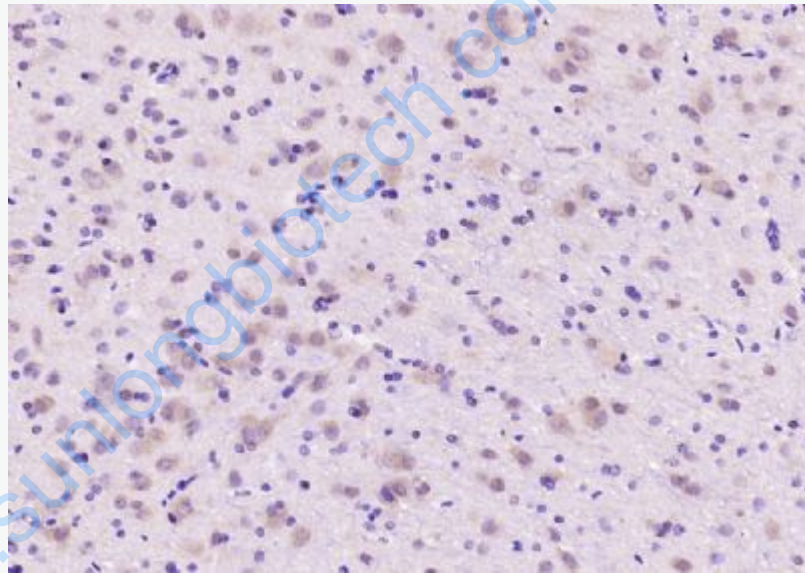


Paraformaldehyde-fixed, paraffin embedded (mouse brain); Antigen retrieval by boiling in sodium citrate buffer (pH6.0) for 15min; Block endogenous peroxidase by 3% hydrogen peroxide for 20 minutes; Blocking buffer (normal goat serum) at 37°C for 30min; Antibody incubation with (SMAD8) Polyclonal Antibody, Unconjugated (SL8844R) at 1:200 overnight at 4°C, followed by operating according to SP Kit(Rabbit) (sp-0023) instructions and DAB staining.



**Picture:**

Paraformaldehyde-fixed, paraffin embedded (human breast carcinoma); Antigen retrieval by boiling in sodium citrate buffer (pH6.0) for 15min; Block endogenous peroxidase by 3% hydrogen peroxide for 20 minutes; Blocking buffer (normal goat serum) at 37°C for 30min; Antibody incubation with (SMAD8) Polyclonal Antibody, Unconjugated (SL8844R) at 1:200 overnight at 4°C, followed by operating according to SP Kit(Rabbit) (sp-0023) instructions and DAB staining.



Paraformaldehyde-fixed, paraffin embedded (rat brain); Antigen retrieval by boiling in sodium citrate buffer (pH6.0) for 15min; Block endogenous peroxidase by 3% hydrogen peroxide for 20 minutes; Blocking buffer (normal goat serum) at 37°C for 30min; Antibody incubation with (SMAD8) Polyclonal Antibody, Unconjugated (SL8844R) at 1:200 overnight at 4°C, followed by operating according to SP Kit(Rabbit) (sp-0023) instructions and DAB staining.