



## Rabbit Anti-STOML2 antibody

SL8861R

|                               |   |
|-------------------------------|---|
| <b>Product Name:</b>          | STOML2  |
| <b>Chinese Name:</b>          | 溴化丙胺太林相关蛋白2抗体   |
| <b>Alias:</b>                 | EPB72 like protein 2; HSPC108; OTTHUMP00000021320; SLP 2; SLP2; SLP-2; Stomatin (EPB72) like 2; Stomatin like 2; Stomatin like protein 2; STOML2; STML2_HUMAN.  |
| <b>Organism Species:</b>      | Rabbit  |
| <b>Clonality:</b>             | Polyclonal  |
| <b>React Species:</b>         | Human,Mouse,Rat,Dog,Pig,Cow,Horse,Rabbit,Sheep,   |
| <b>Applications:</b>          | WB=1:500-2000ELISA=1:500-1000IHC-P=1:400-800 (Paraffin sections need antigen repair)<br>not yet tested in other applications.<br>optimal dilutions/concentrations should be determined by the end user.   |
| <b>Molecular weight:</b>      | 39kDa   |
| <b>Cellular localization:</b> | cytoplasmicThe cell membrane  |
| <b>Form:</b>                  | Lyophilized or Liquid   |
| <b>Concentration:</b>         | 1mg/ml  |
| <b>immunogen:</b>             | KLH conjugated synthetic peptide derived from human STOML2/SLP2:251-356/356   |
| <b>Lsotype:</b>               | IgG   |
| <b>Purification:</b>          | affinity purified by Protein A  |
| <b>Storage Buffer:</b>        | 0.01M TBS(pH7.4) with 1% BSA, 0.03% Proclin300 and 50% Glycerol.  |
| <b>Storage:</b>               | Store at -20 °C for one year. Avoid repeated freeze/thaw cycles. The lyophilized antibody is stable at room temperature for at least one month and for greater than a year when kept at -20°C. When reconstituted in sterile pH 7.4 0.01M PBS or diluent of antibody the antibody is stable for at least two weeks at 2-4 °C.   |
| <b>PubMed:</b>                | <a href="#">PubMed</a>  |
| <b>Product Detail:</b>        | STOML2 is a 356 amino acid member of the mec-2 family of proteins. Expressed ubiquitously at low levels, STOML2 is highly expressed in heart, liver and pancreas. STOML2 is localized to the cytoplasm with some distribution on the membrane. STOML2 was first identified as an overexpressed protein in human endometrial adenocarcinoma. Changes in cell growth in samples with different levels of STOML2 |

indicate that STOML2 could play a role in endometrial tumorigenesis. STOML2 is also thought to play a role in regulating ion channel conductances or the organization of sphingolipid and cholesterol-rich lipid rafts.

**Function:**

STOML2 is similar in sequence to stomatin. It is a 356 amino acid protein with a calculated molecular mass of 38.5 kDa. STOML2 has 3 potential initiator sites, all sharing the same open reading frame. The STOML2 protein contains the cognate stomatin family consensus sequence, but it lacks the characteristic N-terminal hydrophobic domain and palmitoylation consensus sequence. STOML2 shares greatest sequence homology with stomatin and SLP1 in a region predicted to contain beta sheet and alpha helix structures. Northern blot analysis detected a 1.5 kb STOML2 transcript in all tissues examined, with highest levels in heart, liver, and pancreas. Western blot analysis detected STOML2 at apparent molecular masses of 45.5 kDa or 44.6 kDa in all human and mammalian cell lines and tissues examined, including red blood cells. Some cells also showed a faint band at about 34.3 kDa, which may represent translation from an alternate initiation site.

**Subcellular Location:**

Membrane; peripheral membrane protein. Cytoplasm. Associated with the cytoskeleton.

**Tissue Specificity:**

Ubiquitously expressed at low levels.

**Similarity:**

Belongs to the band 7/mec-2 family.

**SWISS:**

Q9UJZ1

**Gene ID:**

30968

**Database links:**

[Entrez Gene: 30968](#)Human

[Entrez Gene: 66592](#)Mouse

[Entrez Gene: 298203](#)Rat

[Omim: 608292](#)Human

[SwissProt: Q9UJZ1](#)Human

[SwissProt: Q99JB2](#)Mouse

[SwissProt: Q4FZT0](#)Rat

[Unigene: 3439](#)Human

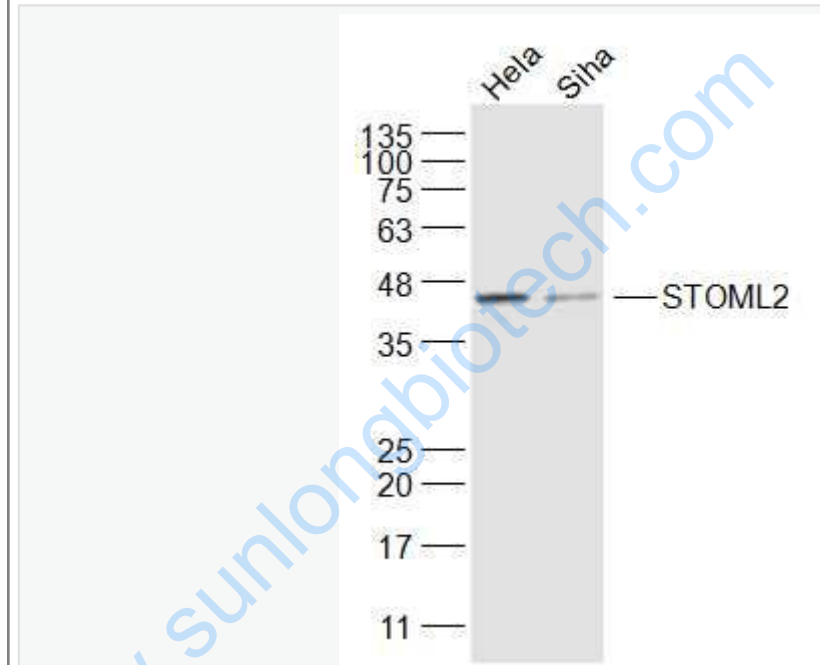
[Unigene: 331565](#)Mouse

[Unigene: 2208](#)Rat

**Important Note:**

This product as supplied is intended for research use only, not for use in human, therapeutic or diagnostic applications.

**Picture:**



Sample:

HeLa(Human) Cell Lysate at 30 ug

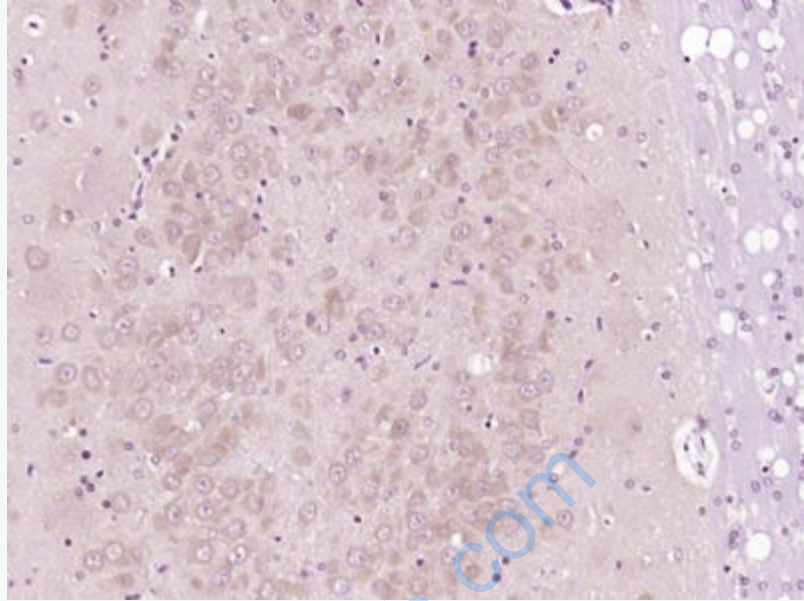
SiHa(Human) Cell Lysate at 30 ug

Primary: Anti-STOML2 (SL8861R) at 1/1000 dilution

Secondary: IRDye800CW Goat Anti-Rabbit IgG at 1/20000 dilution

Predicted band size: 39 kD

Observed band size: 39 kD



Paraformaldehyde-fixed, paraffin embedded (Rat brain); Antigen retrieval by boiling in sodium citrate buffer (pH6.0) for 15min; Block endogenous peroxidase by 3% hydrogen peroxide for 20 minutes; Blocking buffer (normal goat serum) at 37°C for 30min; Antibody incubation with (STOML2) Polyclonal Antibody, Unconjugated (SL8861R) at 1:400 overnight at 4°C, followed by operating according to SP Kit(Rabbit) (sp-0023) instructions and DAB staining.