



Rabbit Anti-PISD antibody

SL8866R

| | |
|-------------------------------|--|
| Product Name: | PISD |
| Chinese Name: | 磷脂酰丝氨酸脱羧酶PISD抗体 |
| Alias: | DJ858B16; dJ858B16.2; DKFZp566G2246; Phosphatidylserine decarboxylase; Phosphatidylserine decarboxylase beta chain; Phosphatidylserine decarboxylase proenzyme; PISD; PISD_HUMAN; PSD; PSDC; PSSC. |
| Organism Species: | Rabbit |
| Clonality: | Polyclonal |
| React Species: | Human,Mouse,Rat,Chicken,Dog,Pig,Horse,Rabbit, |
| Applications: | WB=1:500-2000ELISA=1:500-1000IHC-P=1:400-800IHC-F=1:400-800ICC=1:100-500IF=1:100-500 (Paraffin sections need antigen repair) not yet tested in other applications. optimal dilutions/concentrations should be determined by the end user. |
| Molecular weight: | 47kDa |
| Cellular localization: | cytoplasmic |
| Form: | Lyophilized or Liquid |
| Concentration: | 1mg/ml |
| immunogen: | KLH conjugated synthetic peptide derived from human PISD:151-250/409 |
| Lsotype: | IgG |
| Purification: | affinity purified by Protein A |
| Storage Buffer: | 0.01M TBS(pH7.4) with 1% BSA, 0.03% Proclin300 and 50% Glycerol. |
| Storage: | Store at -20 °C for one year. Avoid repeated freeze/thaw cycles. The lyophilized antibody is stable at room temperature for at least one month and for greater than a year when kept at -20°C. When reconstituted in sterile pH 7.4 0.01M PBS or diluent of antibody the antibody is stable for at least two weeks at 2-4 °C. |
| PubMed: | PubMed |
| Product Detail: | Enzymes known as phosphatidylserine decarboxylases (PSDs) catalyze the formation of phosphatidylethanolamine from phosphatidylserine via phosphatidylserine decarboxylation. Type I PSDs contain LGST motifs and are found in bacteria and eukaryotic mitochondria, whereas type II PSDs contain GGST motifs and are found in eukaryotic endomembrane systems. PISD (phosphatidylserine decarboxylase), also |

known as phosphatidylserine decarboxylase proenzyme, PSDC, PSD, PSSC, DJ858B16, dJ858B16.2 or DKFZp566G2246, is a 408 amino acid type I phosphatidylserine decarboxylase that localizes to the inner mitochondrial membrane. PISD contains a conserved LGST motif which is cleaved to produce two isoforms known as PISD α and PISD β . PISD is capable of forming a heterodimer and is highly expressed in liver and testis. The gene encoding PISD maps to human chromosome 22q12.2.

Subunit:

Heterodimer

Subcellular Location:

Mitochondrion.

Similarity:

Belongs to the phosphatidylserine decarboxylase family.

SWISS:

Q9UG56

Gene ID:

23761

Database links:

[Entrez Gene: 23761](#)Human

[Entrez Gene: 320951](#)Mouse

[Omim: 612770](#)Human

[SwissProt: Q9UG56](#)Human

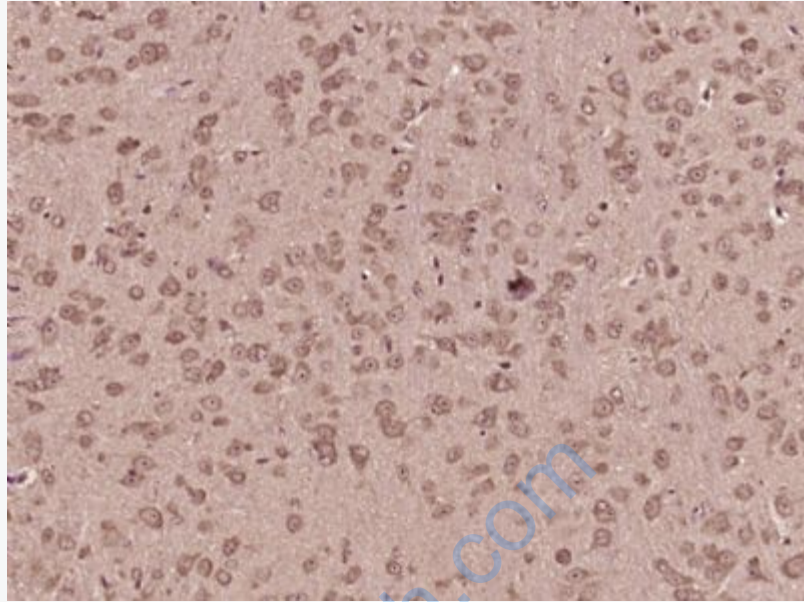
[SwissProt: Q8BSF4](#)Mouse

[Unigene: 420559](#)Human

[Unigene: 273765](#)Mouse

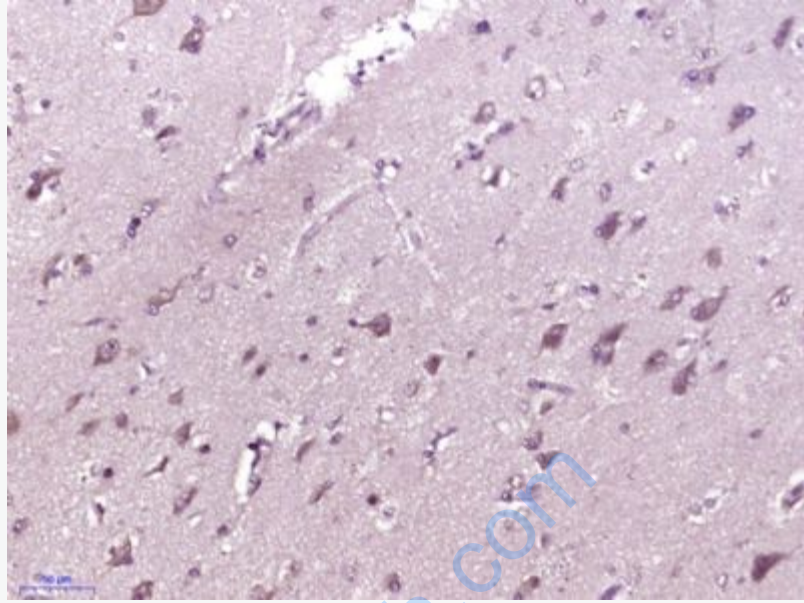
Important Note:

This product as supplied is intended for research use only, not for use in human, therapeutic or diagnostic applications.



Picture:

Paraformaldehyde-fixed, paraffin embedded (Mouse brain); Antigen retrieval by boiling in sodium citrate buffer (pH6.0) for 15min; Block endogenous peroxidase by 3% hydrogen peroxide for 20 minutes; Blocking buffer (normal goat serum) at 37°C for 30min; Antibody incubation with (PISD) Polyclonal Antibody, Unconjugated (SL8866R) at 1:400 overnight at 4°C, followed by operating according to SP Kit(Rabbit) (sp-0023) instructions and DAB staining.



Paraformaldehyde-fixed, paraffin embedded (Human brain glioma); Antigen retrieval by boiling in sodium citrate buffer (pH6.0) for 15min; Block endogenous peroxidase by 3% hydrogen peroxide for 20 minutes; Blocking buffer (normal goat serum) at 37°C for 30min; Antibody incubation with (PISD) Polyclonal Antibody, Unconjugated (SL8866R) at 1:400 overnight at 4°C, followed by operating according to SP Kit(Rabbit) (sp-0023) instructions and DAB staining.