

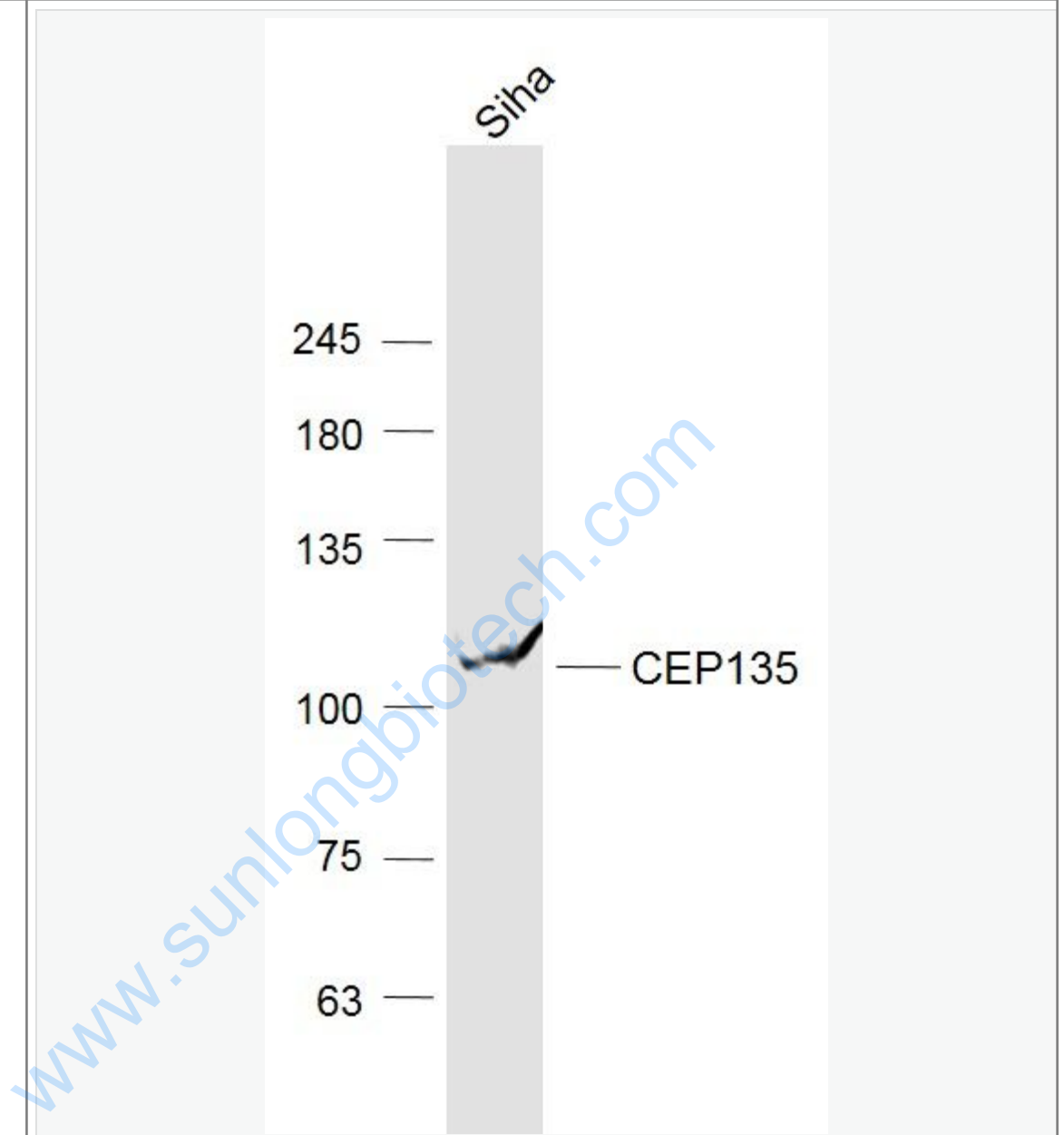


Rabbit Anti-PDZD6 antibody

SL9041R

Product Name:	PDZD6
Chinese Name:	PDZ结构域PDZK6蛋白抗体
Alias:	Homolog of inturned (X. tropicalis); INT; intu; Inturned planar cell polarity effector homolog; KIAA1284; PDZ domain containing 6; PDZ domain-containing protein 6; PDZD 6; PDZD6_HUMAN; PDZK6.
Organism Species:	Rabbit
Clonality:	Polyclonal
React Species:	Human,Mouse,Rat,Rabbit,
Applications:	WB=1:500-2000ELISA=1:500-1000IHC-P=1:400-800IHC-F=1:400-800IF=1:50-200 (Paraffin sections need antigen repair) not yet tested in other applications. optimal dilutions/concentrations should be determined by the end user.
Molecular weight:	106kDa
Cellular localization:	cytoplasmicThe cell membraneExtracellular matrix
Form:	Lyophilized or Liquid
Concentration:	1mg/ml
immunogen:	KLH conjugated synthetic peptide derived from human PDZD6:301-400/942
Lsotype:	IgG
Purification:	affinity purified by Protein A
Storage Buffer:	0.01M TBS(pH7.4) with 1% BSA, 0.03% Proclin300 and 50% Glycerol.
Storage:	Store at -20 °C for one year. Avoid repeated freeze/thaw cycles. The lyophilized antibody is stable at room temperature for at least one month and for greater than a year when kept at -20°C. When reconstituted in sterile pH 7.4 0.01M PBS or diluent of antibody the antibody is stable for at least two weeks at 2-4 °C.
PubMed:	PubMed
Product Detail:	

Picture:



Sample:

Siha(Human) Cell Lysate at 30 ug

Primary: Anti-CEP135 (SL9041R) at 1/1000 dilution

Secondary: IRDye800CW Goat Anti-Rabbit IgG at 1/20000 dilution

Predicted band size: 106 kD

	Observed band size: 106 kD
--	----------------------------

www.sunlongbiotech.com