



## Rabbit Anti-phospho-Dishevelled 2 (Thr224) antibody

SL9060R

<b>Product Name:</b>	phospho-Dishevelled 2 (Thr224)
<b>Chinese Name:</b>	磷酸化蓬乱蛋白2抗体
<b>Alias:</b>	Dishevelled 2 (phospho T224); Dishevelled 2 (phospho Thr224); p-Dishevelled 2 (Thr224); p-Dishevelled 2 (T224); Dishevelled 2 (homologous to Drosophila dsh); Dishevelled dsh homolog 2; Dishevelled-2; Dishevelled2; DSH homolog 2; DVL 2; Dvl2; DVL2_HUMAN; Segment polarity protein dishevelled homolog DVL 2; Segment polarity protein dishevelled homolog DVL-2; Segment polarity protein dishevelled homolog DVL2.
<b>Organism Species:</b>	Rabbit
<b>Clonality:</b>	Polyclonal
<b>React Species:</b>	Human,Mouse,Rat,Chicken,Dog,Pig,Cow,Horse,Sheep,
<b>Applications:</b>	ELISA=1:500-1000IHC-P=1:400-800IHC-F=1:400-800IF=1:50-200 (Paraffin sections need antigen repair) not yet tested in other applications. optimal dilutions/concentrations should be determined by the end user.
<b>Molecular weight:</b>	79kDa
<b>Cellular localization:</b>	cytoplasmicThe cell membrane
<b>Form:</b>	Lyophilized or Liquid
<b>Concentration:</b>	1mg/ml
<b>immunogen:</b>	KLH conjugated synthesised phosphopeptide derived from human DVL2 around the phosphorylation site of Thr224:SS(p-T)EQ
<b>Lsotype:</b>	IgG
<b>Purification:</b>	affinity purified by Protein A
<b>Storage Buffer:</b>	0.01M TBS(pH7.4) with 1% BSA, 0.03% Proclin300 and 50% Glycerol.
<b>Storage:</b>	Store at -20 °C for one year. Avoid repeated freeze/thaw cycles. The lyophilized antibody is stable at room temperature for at least one month and for greater than a year when kept at -20°C. When reconstituted in sterile pH 7.4 0.01M PBS or diluent of

	antibody the antibody is stable for at least two weeks at 2-4 °C.
<b>PubMed:</b>	<a href="#">PubMed</a>
<b>Product Detail:</b>	<p>Mammalian homologs of the Drosophila dishevelled (Dsh) gene have been identified, including Dvl-1, Dvl-2 and Dvl-3. The mammalian dishevelled proteins contain three homologous domains, two of which are unrelated to any other known protein. The third region is homologous to the discs-large homology domain of Drosophila discs-large-1, a tumor suppressor protein. Like their Drosophila counterpart, the dishevelled proteins are thought to be involved in embryogenesis. Overexpression of Dvl-1 has been shown to inhibit the phosphorylation of tau by GSK-3? This finding may prove to be important in Alzheimer's studies, which have shown that tau is hyperphosphorylated. In Drosophila, Dsh is a component of the frizzled signaling pathway. Both mammalian dishevelled and frizzled proteins are components of the Wnt signalling pathway.</p> <p><b>Function:</b> Participates in Wnt signaling by binding to the cytoplasmic C-terminus of frizzled family members and transducing the Wnt signal to down-stream effectors. Promotes internalization and degradation of frizzled proteins upon Wnt signaling. Plays a role both in canonical and non-canonical Wnt signaling. Plays a role in the signal transduction pathways mediated by multiple Wnt genes (By similarity).</p> <p><b>Subunit:</b> Interacts through its PDZ domain with the C-terminal regions of VANGL1 and VANGL2. Interacts with Rac. Interacts with ARRB1; the interaction is enhanced by phosphorylation of DVL1 (By similarity). Can form large oligomers (via DIX domain). Interacts (via DIX domain) with DIXDC1 (via DIX domain). Interacts (via DEP domain) with AP2M1 and the AP-2 complex (By similarity). Interacts with DACT1.</p> <p><b>Subcellular Location:</b> Subcellular Location : Cell membrane. Cytoplasm &gt; cytosol. Cytoplasmic vesicle. Localizes at the cell membrane upon interaction with frizzled family members and promotes their internalization. Localizes to cytoplasmic puncta.</p> <p><b>Post-translational modifications:</b> Phosphorylated by CSNK1D.</p> <p><b>Similarity:</b> Belongs to the DSH family. Contains 1 DEP domain. Contains 1 DIX domain. Contains 1 PDZ (DHR) domain.</p> <p><b>SWISS:</b> O14641</p> <p><b>Gene ID:</b> 1856</p>

**Database links:**

[Entrez Gene: 1856](#) Human

[Entrez Gene: 13543](#) Mouse

[Entrez Gene: 303251](#) Rat

[Olim: 602151](#) Human

[SwissProt: O14641](#) Human

[SwissProt: Q60838](#) Mouse

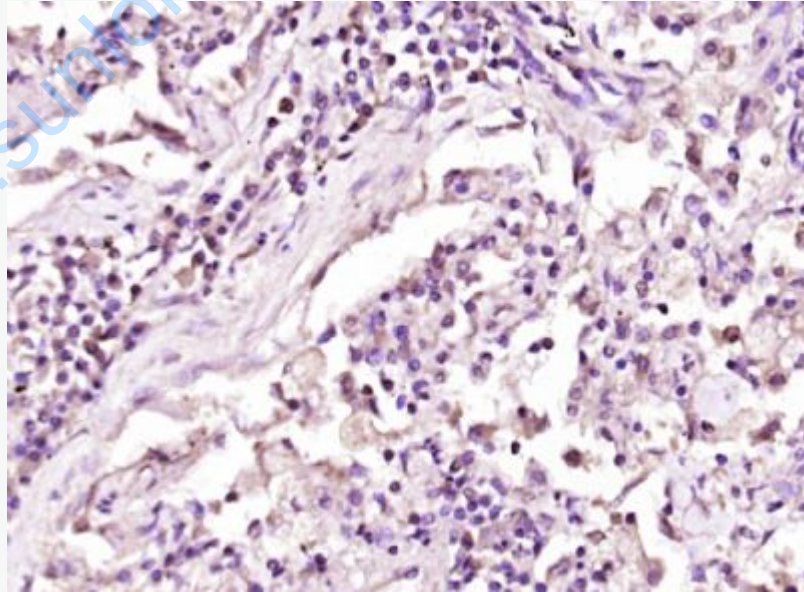
[Unigene: 118640](#) Human

[Unigene: 5114](#) Mouse

**Important Note:**

This product as supplied is intended for research use only, not for use in human, therapeutic or diagnostic applications.

**Picture:**



Paraformaldehyde-fixed, paraffin embedded (human lung carcinoma); Antigen retrieval by boiling in sodium citrate buffer (pH6.0) for 15min; Block endogenous

peroxidase by 3% hydrogen peroxide for 20 minutes; Blocking buffer (normal goat serum) at 37°C for 30min; Antibody incubation with (phospho-Dishevelled 2 (Thr224)) Polyclonal Antibody, Unconjugated (SL9060R) at 1:400 overnight at 4°C, followed by operating according to SP Kit(Rabbit) (sp-0023) instructions and DAB staining.

[www.sunlongbiotech.com](http://www.sunlongbiotech.com)