



Rabbit Anti-ANKS6 antibody

SL9099R

Product Name:	ANKS6
Chinese Name:	锚蛋白重复及SAM结构域蛋白6抗体
Alias:	ANKRD14; Anks6; ANKS6_HUMAN; ankyrin repeat and SAM domain containing protein 6; Ankyrin repeat and SAM domain-containing protein 6; ankyrin repeat domain 14; ankyrin repeat domain containing protein 14; Ankyrin repeat domain-containing protein 14; SAM domain containing protein 6; SAM domain-containing protein 6; SamCystin; SAMD6; sterile alpha motif domain containing 6; sterile alpha motif domain containing protein 6; Sterile alpha motif domain-containing protein 6.
Organism Species:	Rabbit
Clonality:	Polyclonal
React Species:	Human,Mouse,Rat,Dog,Pig,Cow,Horse,Rabbit,Sheep,
Applications:	WB=1:500-2000ELISA=1:500-1000IHC-P=1:400-800IHC-F=1:400-800IF=1:50-200 (Paraffin sections need antigen repair) not yet tested in other applications. optimal dilutions/concentrations should be determined by the end user.
Molecular weight:	92kDa
Cellular localization:	The nucleuscytoplasmic
Form:	Lyophilized or Liquid
Concentration:	1mg/ml
immunogen:	KLH conjugated synthetic peptide derived from human ANKS6:431-530/871
Lsotype:	IgG
Purification:	affinity purified by Protein A
Storage Buffer:	0.01M TBS(pH7.4) with 1% BSA, 0.03% Proclin300 and 50% Glycerol.
Storage:	Store at -20 °C for one year. Avoid repeated freeze/thaw cycles. The lyophilized antibody is stable at room temperature for at least one month and for greater than a year when kept at -20°C. When reconstituted in sterile pH 7.4 0.01M PBS or diluent of antibody the antibody is stable for at least two weeks at 2-4 °C.
PubMed:	PubMed
Product Detail:	ANKS6, also known as ankyrin repeat domain-containing protein 14, SAMD6 (sterile alpha motif domain-containing protein 6), SamCystin or PKDR1, is an 871 amino acid

phosphoprotein that contains eleven ANK repeats, one SAM domain and exists as three alternatively spliced isoforms. Encoded by a gene that maps to human chromosome 9q22.33, ANKS6 is necessary for renal function and is linked to renal cyst formation in polycystic kidney disease. ANKS6 interacts with BICC1, another protein linked to polycystic kidney disease, and both co-localize to the same cell region. ANKS6 is involved in protein–protein interactions with both itself as well as BICC1, and both proteins function in a molecular pathway that is linked to cystogenesis. ANKS6 may also be associated with dental anomalies.

Function:

Required for renal function (By similarity).

Similarity:

Contains 11 ANK repeats.

Contains 1 SAM (sterile alpha motif) domain.

SWISS:

Q68DC2

Gene ID:

203286

Database links:

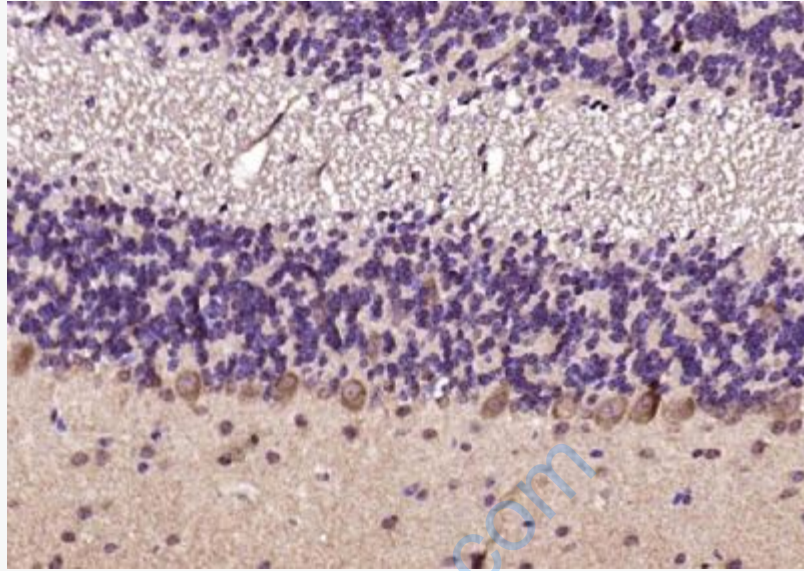
[Entrez Gene: 203286](#)Human

[SwissProt: Q68DC2](#)Human

[Unigene: 406890](#)Human

Important Note:

This product as supplied is intended for research use only, not for use in human, therapeutic or diagnostic applications.



Picture:

Paraformaldehyde-fixed, paraffin embedded (rat intestine); Antigen retrieval by boiling in sodium citrate buffer (pH6.0) for 15min; Block endogenous peroxidase by 3% hydrogen peroxide for 20 minutes; Blocking buffer (normal goat serum) at 37°C for 30min; Antibody incubation with (ANKS6) Polyclonal Antibody, Unconjugated (SL9099R) at 1:200 overnight at 4°C, followed by operating according to SP Kit(Rabbit) (sp-0023) instructions and DAB staining.