



Rabbit Anti-Repetin antibody

SL9181R

Product Name:	Repetin
Chinese Name:	中间丝相关蛋白抗体
Alias:	Intermediate filament associated protein; RPTN; RPTN HUMAN.
Organism Species:	Rabbit
Clonality:	Polyclonal
React Species:	Human,Mouse,Rat,Pig,Cow,Horse,
Applications:	WB=1:500-2000ELISA=1:500-1000IHC-P=1:400-800IHC-F=1:400-800IF=1:50-200 (Paraffin sections need antigen repair) not yet tested in other applications. optimal dilutions/concentrations should be determined by the end user.
Molecular weight:	91kDa
Cellular localization:	Extracellular matrixSecretory protein
Form:	Lyophilized or Liquid
Concentration:	1mg/ml
immunogen:	KLH conjugated synthetic peptide derived from human Repetin:41-140/784
Lsotype:	IgG
Purification:	affinity purified by Protein A
Storage Buffer:	0.01M TBS(pH7.4) with 1% BSA, 0.03% Proclin300 and 50% Glycerol.
Storage:	Store at -20 °C for one year. Avoid repeated freeze/thaw cycles. The lyophilized antibody is stable at room temperature for at least one month and for greater than a year when kept at -20°C. When reconstituted in sterile pH 7.4 0.01M PBS or diluent of antibody the antibody is stable for at least two weeks at 2-4 °C.
PubMed:	PubMed
Product Detail:	Repetin is a 784 amino acid secreted protein that belongs to the S100-fused protein family. Repetin is an extracellular epidermal matrix protein that is expressed in the epidermis and at high levels in eccrine sweat glands, the inner sheaths of hair roots and the filiform papilli of the tongue. A multifunctional epidermal matrix protein, repetin is involved in the cornified cell envelope formation. Containing two EF-hand domains, repetin's recombinant N-terminal domain binds calcium reversibly. Repetin and trichohyalin may compensate for absent loricrin. The repetin gene contains three exons,

two introns and spans at least 5.6 kb. The repetin gene is conserved in cow, mouse and rat, and maps to human chromosome 1q21.3.

Function:

Involved in the cornified cell envelope formation. Multifunctional epidermal matrix protein. Reversibly binds calcium.

Subcellular Location:

Secreted; extracellular space; extracellular matrix.

Tissue Specificity:

Repetin is a multifunctional epidermal matrix protein involved in the cornified cell envelope formation. It reversibly binds calcium. Expression is scattered in the normal epidermis but strong in the acrosyringium, the inner hair root sheath and in the filiform papilli of the tongue.

Post-translational modifications:

Potential substrate of transglutaminase. Some arginines are probably converted. Phosphorylated upon DNA damage, probably by ATM or ATR.

Similarity:

Belongs to the S100-fused protein family.
Contains 2 EF-hand domains.

SWISS:

Q6XPR3

Gene ID:

126638

Database links:

[Entrez Gene: 126638](#)Human

[Entrez Gene: 20129](#)Mouse

[Omim: 613259](#)Human

[SwissProt: Q6XPR3](#)Human

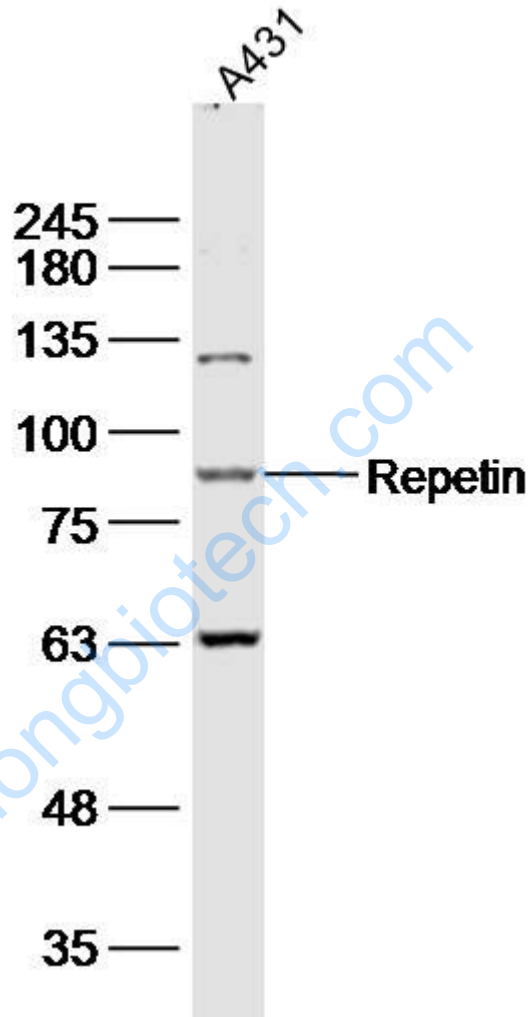
[SwissProt: P97347](#)Mouse

[Unigene: 376144](#)Human

Important Note:

This product as supplied is intended for research use only, not for use in human, therapeutic or diagnostic applications.

Picture:



Sample:

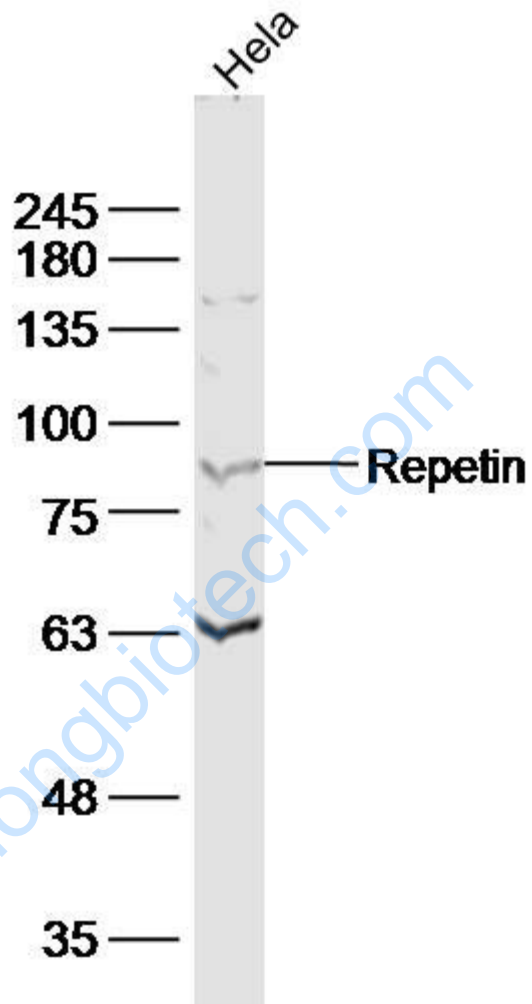
A431(human) cell Lysate at 40 ug

Primary: Anti- repetin (SL9181R) at 1/300 dilution

Secondary: IRDye800CW Goat Anti-Rabbit IgG at 1/20000 dilution

Predicted band size: 91kD

Observed band size: 91 kD



Sample:

HeLa(human)cell Lysate at 40 ug

Primary: Anti- repetin (SL9181R) at 1/300 dilution

Secondary: IRDye800CW Goat Anti-Rabbit IgG at 1/20000 dilution

Predicted band size: 91kD

Observed band size: 91 kD