



Rabbit Anti-VGLL4 antibody

SL9185R

Product Name:	VGLL4
Chinese Name:	转录辅助因子退变样蛋白4抗体
Alias:	Transcription cofactor vestigial like protein 4; Vestigial like protein 4; VGL 4; VGLL4; VGLL4_HUMAN.
Organism Species:	Rabbit
Clonality:	Polyclonal
React Species:	Human,Mouse,Rat,Chicken,Dog,Pig,Cow,Horse,Rabbit,Sheep,
Applications:	WB=1:500-2000ELISA=1:500-1000 not yet tested in other applications. optimal dilutions/concentrations should be determined by the end user.
Molecular weight:	31kDa
Cellular localization:	The nucleus
Form:	Lyophilized or Liquid
Concentration:	1mg/ml
immunogen:	KLH conjugated synthetic peptide derived from human VGLL4:201-290/290
Lsotype:	IgG
Purification:	affinity purified by Protein A
Storage Buffer:	0.01M TBS(pH7.4) with 1% BSA, 0.03% Proclin300 and 50% Glycerol.
Storage:	Store at -20 癆 for one year. Avoid repeated freeze/thaw cycles. The lyophilized antibody is stable at room temperature for at least one month and for greater than a year when kept at -20癆. When reconstituted in sterile pH 7.4 0.01M PBS or diluent of antibody the antibody is stable for at least two weeks at 2-4 癆.
PubMed:	PubMed
Product Detail:	The transcriptional enhancer factor-1 (TEF-1) family of transcription factors regulate tissue-specific gene expression in muscle and placenta. The mechanism whereby TEF-1 confers tissue specificity depends largely on the interaction of TEF-1 with tissue-specific cofactors. Transcription cofactor Vgl-4 (vestigial-like protein 4) is a 290 amino acid nuclear protein that interacts with TEF-1 and MEF-2. Vgl-4 is the only member of the vestigial-like family that is expressed in heart. Overexpression of Vgl-4 in cardiac

myocytes interferes with basal expression and β -adrenergic receptor-dependent activation of a TEF-1 dependent skeletal β -actin promoter. This suggests that Vgl-4 counteracts β -adrenergic activation of gene expression in cardiomyocytes. There are two isoforms of Vgl-4 that are produced as a result of alternative splicing events.

Function:

May act as a specific coactivator for the mammalian TEFs (By similarity).

Subunit:

Interacts with TEFs (By similarity). Interacts with IRF2BP2.

Subcellular Location:

Nuclear

Similarity:

Belongs to the vestigial family.

SWISS:

Q14135

Gene ID:

9686

Database links:

[Entrez Gene: 9686](#)Human

[Entrez Gene: 232334](#)Mouse

[Entrez Gene: 297523](#)Rat

[SwissProt: Q14135](#)Human

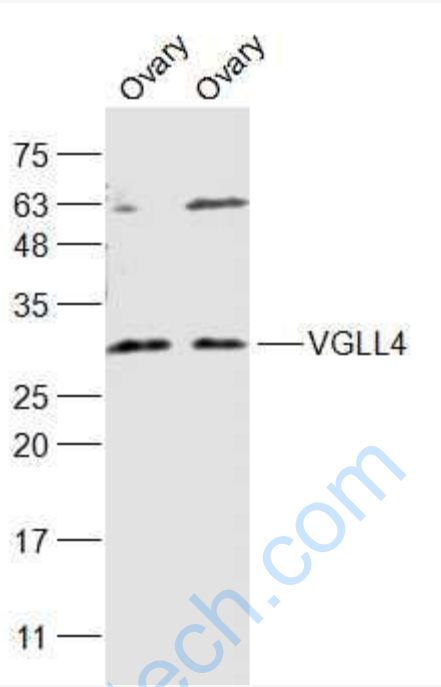
[SwissProt: Q80V24](#)Mouse

[Unigene: 23131](#)Rat

Important Note:

This product as supplied is intended for research use only, not for use in human, therapeutic or diagnostic applications.

Picture:



Sample:

Ovary (Mouse) Lysate at 40 ug

Ovary (Rat) Lysate at 40 ug

Primary: Anti-VGLL4 (SL9185R) at 1/1000 dilution

Secondary: IRDye800CW Goat Anti-Rabbit IgG at 1/20000 dilution

Predicted band size: 31 kD

Observed band size: 31 kD