



## Rabbit Anti-PROCA1 antibody

SL9188R

|                               |                                                                                                                                                                                                                                                                                                                                                                                                                                                                                              |
|-------------------------------|----------------------------------------------------------------------------------------------------------------------------------------------------------------------------------------------------------------------------------------------------------------------------------------------------------------------------------------------------------------------------------------------------------------------------------------------------------------------------------------------|
| <b>Product Name:</b>          | PROCA1                                                                                                                                                                                                                                                                                                                                                                                                                                                                                       |
| <b>Chinese Name:</b>          | Cyclin A1相互作用蛋白抗体                                                                                                                                                                                                                                                                                                                                                                                                                                                                            |
| <b>Alias:</b>                 | PRCA1_HUMAN; Proca1; proline-rich cyclin A1-interacting protein; Protein interacting with cyclin A1; Protein PROCA1; RP23-185A18.6.                                                                                                                                                                                                                                                                                                                                                          |
| <b>Organism Species:</b>      | Rabbit                                                                                                                                                                                                                                                                                                                                                                                                                                                                                       |
| <b>Clonality:</b>             | Polyclonal                                                                                                                                                                                                                                                                                                                                                                                                                                                                                   |
| <b>React Species:</b>         | Human,Mouse,Rat,Dog,Pig,Cow,Horse,Sheep,                                                                                                                                                                                                                                                                                                                                                                                                                                                     |
| <b>Applications:</b>          | WB=1:500-2000ELISA=1:500-1000IHC-P=1:400-800IHC-F=1:400-800IF=1:50-200 (Paraffin sections need antigen repair)<br>not yet tested in other applications.<br>optimal dilutions/concentrations should be determined by the end user.                                                                                                                                                                                                                                                            |
| <b>Molecular weight:</b>      | 41kDa                                                                                                                                                                                                                                                                                                                                                                                                                                                                                        |
| <b>Cellular localization:</b> | The nucleuscytoplasmicExtracellular matrixSecretory protein                                                                                                                                                                                                                                                                                                                                                                                                                                  |
| <b>Form:</b>                  | Lyophilized or Liquid                                                                                                                                                                                                                                                                                                                                                                                                                                                                        |
| <b>Concentration:</b>         | 1mg/ml                                                                                                                                                                                                                                                                                                                                                                                                                                                                                       |
| <b>immunogen:</b>             | KLH conjugated synthetic peptide derived from human PROCA1:201-300/364                                                                                                                                                                                                                                                                                                                                                                                                                       |
| <b>Lsotype:</b>               | IgG                                                                                                                                                                                                                                                                                                                                                                                                                                                                                          |
| <b>Purification:</b>          | affinity purified by Protein A                                                                                                                                                                                                                                                                                                                                                                                                                                                               |
| <b>Storage Buffer:</b>        | 0.01M TBS(pH7.4) with 1% BSA, 0.03% Proclin300 and 50% Glycerol.                                                                                                                                                                                                                                                                                                                                                                                                                             |
| <b>Storage:</b>               | Store at -20 °C for one year. Avoid repeated freeze/thaw cycles. The lyophilized antibody is stable at room temperature for at least one month and for greater than a year when kept at -20°C. When reconstituted in sterile pH 7.4 0.01M PBS or diluent of antibody the antibody is stable for at least two weeks at 2-4 °C.                                                                                                                                                                |
| <b>PubMed:</b>                | <a href="#">PubMed</a>                                                                                                                                                                                                                                                                                                                                                                                                                                                                       |
| <b>Product Detail:</b>        | PROCA1 is a 364 amino acid protein that belongs to the PROCA1 family and exists as two alternatively spliced isoforms. Conserved in dog, cow, mouse and rat, PROCA1 participates in calcium ion binding and phospholipase A2 activity. The gene that encodes PROCA1 maps to human chromosome 17q11.2. Chromosome 17 makes up over 2.5% of the human genome, with approximately 81 million bases encoding over 1,200 genes. Two key tumor suppressor genes are associated with chromosome 17, |

namely, p53 and BRCA1. Malfunction or loss of p53 expression is associated with malignant cell growth and Li-Fraumeni syndrome. BRCA1 is recognized as a genetic determinant of early onset breast cancer. Chromosome 17 is also linked to neurofibromatosis, dysregulated Schwann cell growth, Alexander disease, Birt-Hogg-Dube syndrome and Canavan disease.

**Similarity:**

Belongs to the PROCA1 family.

**SWISS:**

Q8NCQ7

**Gene ID:**

147011

**Database links:**

[Entrez Gene: 147011](#)Human

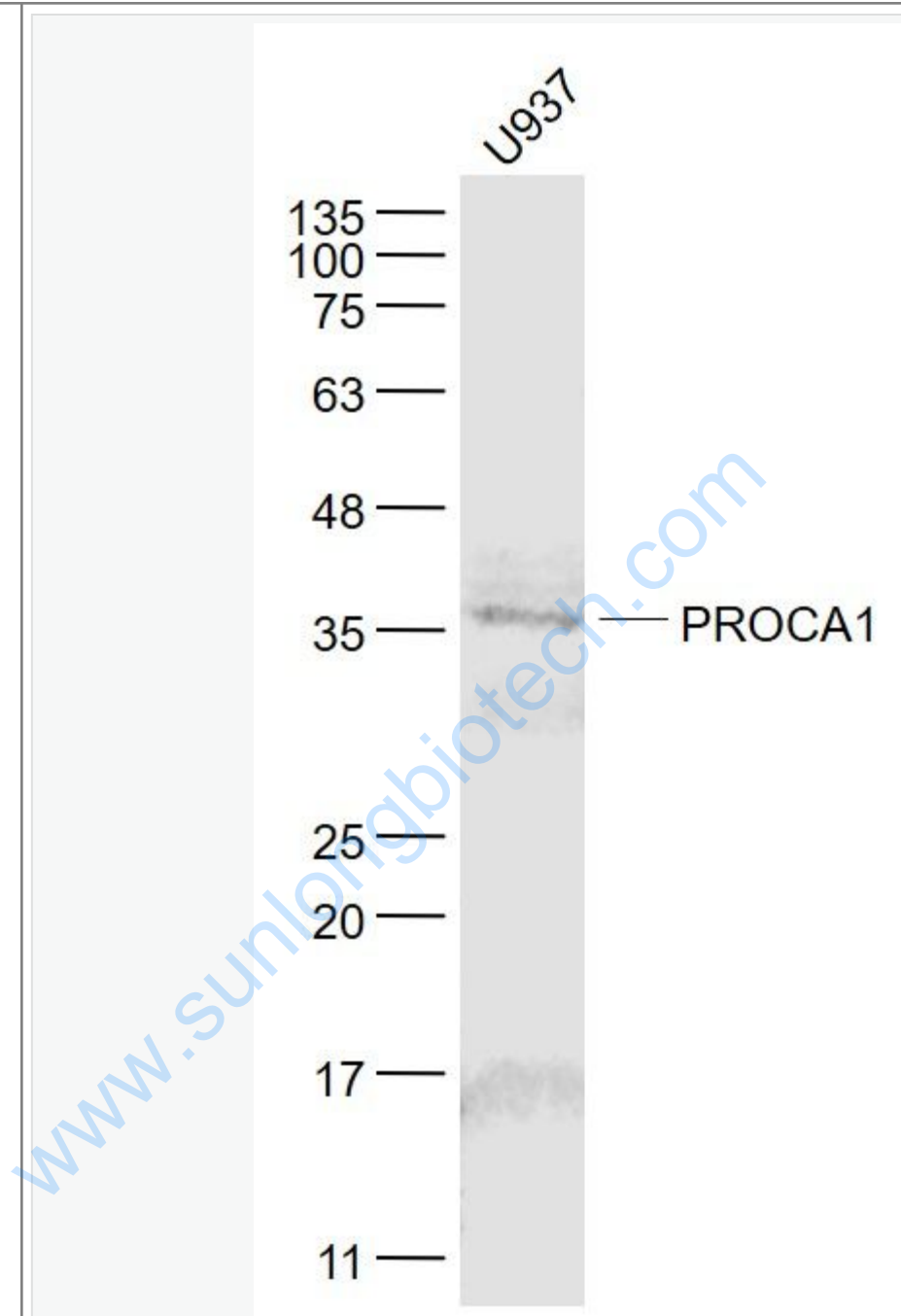
[SwissProt: Q8NCQ7](#)Human

[Unigene: 207471](#)Human

**Important Note:**

This product as supplied is intended for research use only, not for use in human, therapeutic or diagnostic applications.

Picture:



Sample:

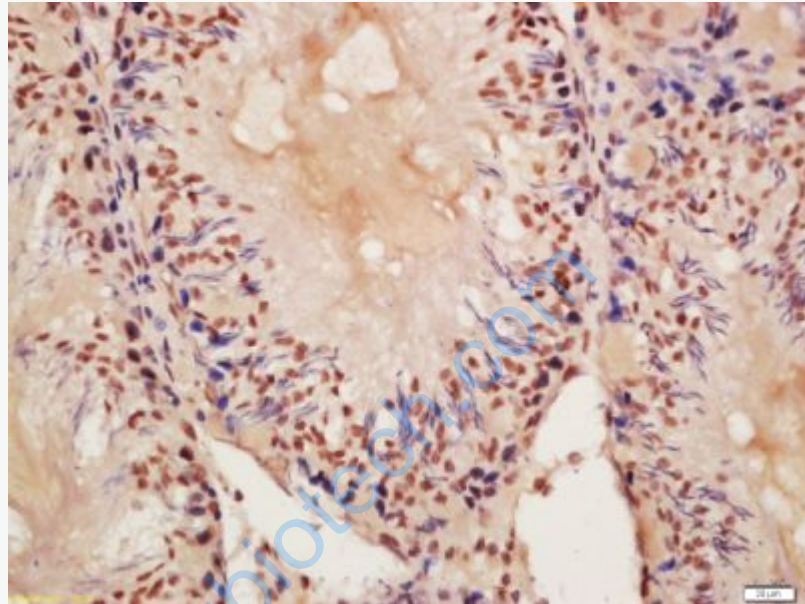
U937(Human) Cell Lysate at 30 ug

Primary: Anti- PROCA1 (SL9188R) at 1/1000 dilution

Secondary: IRDye800CW Goat Anti-Rabbit IgG at 1/20000 dilution

Predicted band size: 41 kD

Observed band size: 37 kD



Tissue/cell: rat testis tissue; 4% Paraformaldehyde-fixed and paraffin-embedded;  
Antigen retrieval: citrate buffer ( 0.01M, pH 6.0 ), Boiling bathing for 15min; Block  
endogenous peroxidase by 3% Hydrogen peroxide for 30min; Blocking buffer  
(normal goat serum,C-0005) at 37°C for 20 min;

Incubation: Anti-PROCA1 Polyclonal Antibody, Unconjugated(SL9188R) 1:200,  
overnight at 4°C, followed by conjugation to the secondary antibody(SP-0023) and  
DAB(C-0010) staining