



## Rabbit Anti-IGSF11 antibody

SL9201R

<b>Product Name:</b>	IGSF11
<b>Chinese Name:</b>	大脑和睾丸特异性免疫球蛋白超家族成员11抗体
<b>Alias:</b>	brain and testis specific immunoglobulin superfamily protein; BTIGSF; CXADR like 1; CXADRL1; Igsf13; immunoglobulin superfamily member 11; Immunoglobulin superfamily member 11 precursor; MGC35227; V set and immunoglobulin domain containing 3; V set and immunoglobulin domain containing protein 3; VSIG3; IGS11_HUMAN.
<b>Organism Species:</b>	Rabbit
<b>Clonality:</b>	Polyclonal
<b>React Species:</b>	Human,Mouse,Rat,Cow,Horse,Rabbit,Sheep,
<b>Applications:</b>	ELISA=1:500-1000 not yet tested in other applications. optimal dilutions/concentrations should be determined by the end user.
<b>Molecular weight:</b>	44kDa
<b>Cellular localization:</b>	The cell membrane
<b>Form:</b>	Lyophilized or Liquid
<b>Concentration:</b>	1mg/ml
<b>immunogen:</b>	KLH conjugated synthetic peptide derived from human IGSF11:151-250/431<Extracellular>
<b>Lsotype:</b>	IgG
<b>Purification:</b>	affinity purified by Protein A
<b>Storage Buffer:</b>	0.01M TBS(pH7.4) with 1% BSA, 0.03% Proclin300 and 50% Glycerol.
<b>Storage:</b>	Store at -20 °C for one year. Avoid repeated freeze/thaw cycles. The lyophilized antibody is stable at room temperature for at least one month and for greater than a year when kept at -20°C. When reconstituted in sterile pH 7.4 0.01M PBS or diluent of antibody the antibody is stable for at least two weeks at 2-4 °C.
<b>PubMed:</b>	<a href="#">PubMed</a>
<b>Product Detail:</b>	IGSF11 is also known as BTIGSF (brain and testis-specific immunoglobulin superfamily protein) or VSIG3 (V-set and immunoglobulin domain-containing protein 3) and is a 431 amino acid protein that is expressed as three isoforms. IGSF11 is highly

expressed in testis and ovary and is also expressed in brain, kidney and skeletal muscle, localized to the cellular membrane as a single-pass membrane protein. IGSF11 is an immunoglobulin with V-type and C2-type domains that function in molecular recognition. When IGSF11 is in the trans position, it plays an important role in cell-cell adhesion via both homophilic and heterophilic interactions with other molecules. These cell-cell interactions are also thought to be important for neuronal cell interactions, such as neuron-neuron or neuron-glia interactions, which are important for the development and function of the central nervous system. In addition, IGSF11 might also be involved interactions between Sertoli cells and spermatocytes, which are important associations during spermatogenesis. The IGSF11 gene is commonly upregulated in gastric cancer and IGSF11 is highly expressed in many types of human tumors, indicating that it may be useful as a target for immunotherapy.

**Function:**

Functions as a cell adhesion molecule through homophilic interaction. Stimulates cell growth.

**Subcellular Location:**

Cell Membrane, Single-pass type I membrane protein.

**Tissue Specificity:**

Abundantly expressed in testis and ovary and to a lower extent in brain, kidney and skeletal muscle.

**Post-translational modifications:**

N-glycosylated (By similarity).

**Similarity:**

Contains 1 Ig-like C2-type (immunoglobulin-like) domain.  
Contains 1 Ig-like V-type (immunoglobulin-like) domain.

**SWISS:**

Q5DX21

**Gene ID:**

152404

**Database links:**

[Entrez Gene: 152404](#)Human

[Entrez Gene: 207683](#)Mouse

[Entrez Gene: 303926](#)Rat

[Omim: 608351](#)Human

[SwissProt: Q5DX21](#)Human

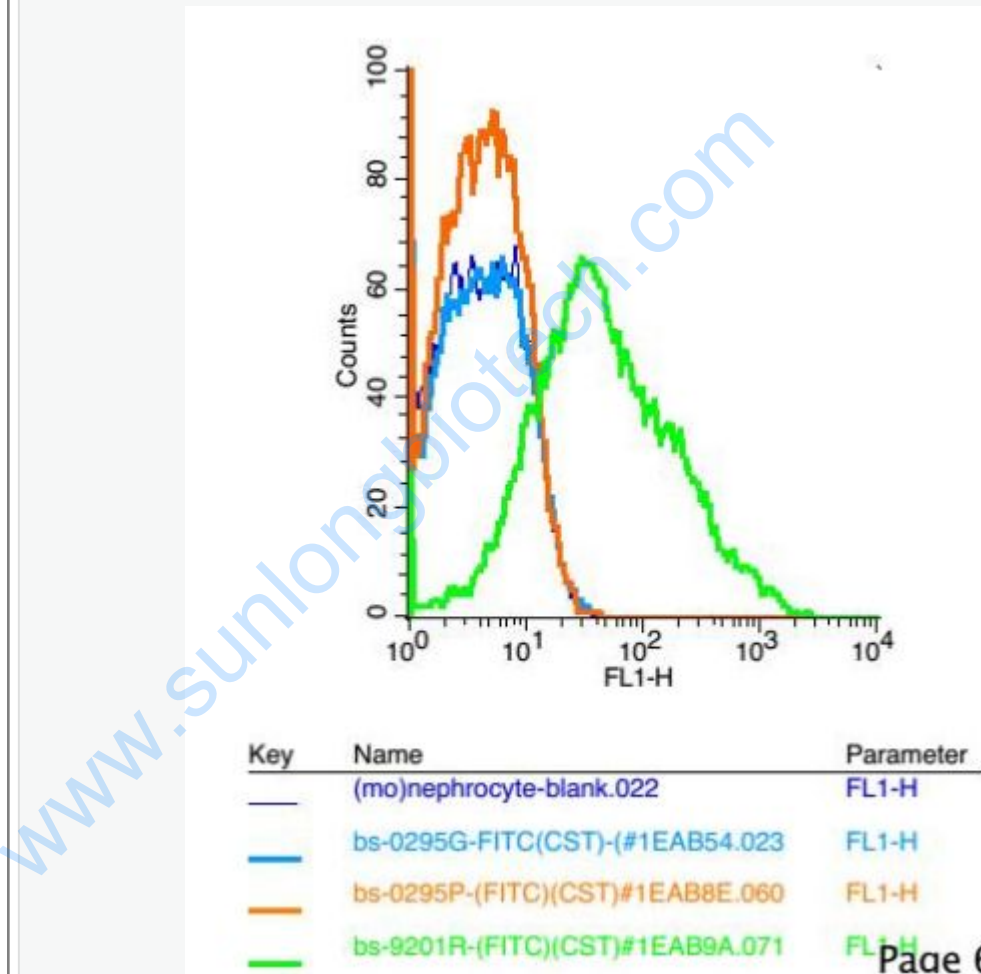
[SwissProt: P0C673](#)Mouse

[SwissProt: Q5U2P2](#)Rat

**Important Note:**

This product as supplied is intended for research use only, not for use in human, therapeutic or diagnostic applications.

Picture:



Positive control: mouse nephrocyte

Isotype Control Antibody: Rabbit IgG ; Secondary Antibody: Goat anti-rabbit IgG-

FITC, Dilution: 1:100 in 1 X PBS containing 0.5% BSA ; Primary Antibody

Dilution: 12µl in 100 µL1X PBS containing 0.5% BSA.

