



Rabbit Anti-IGSF21 antibody

SL9204R

Product Name:	IGSF21
Chinese Name:	免疫球蛋白超家族成员21抗体
Alias:	FLJ41177; IGSF 21; Immunoglobulin superfamily member 21; immunoglobulin superfamily member 21; MGC15730; RP11 121A23.1; IGS21_HUMAN.
Organism Species:	Rabbit
Clonality:	Polyclonal
React Species:	Human,Mouse,Rat,Chicken,Dog,Pig,Cow,Horse,Sheep,
Applications:	WB=1:500-2000ELISA=1:500-1000IHC-P=1:400-800IHC-F=1:400-800IF=1:50-200 (Paraffin sections need antigen repair) not yet tested in other applications. optimal dilutions/concentrations should be determined by the end user.
Molecular weight:	49kDa
Cellular localization:	Secretory protein
Form:	Lyophilized or Liquid
Concentration:	1mg/ml
immunogen:	KLH conjugated synthetic peptide derived from human IGSF21:81-180/467
Lsotype:	IgG
Purification:	affinity purified by Protein A
Storage Buffer:	0.01M TBS(pH7.4) with 1% BSA, 0.03% Proclin300 and 50% Glycerol.
Storage:	Store at -20 °C for one year. Avoid repeated freeze/thaw cycles. The lyophilized antibody is stable at room temperature for at least one month and for greater than a year when kept at -20°C. When reconstituted in sterile pH 7.4 0.01M PBS or diluent of antibody the antibody is stable for at least two weeks at 2-4 °C.
PubMed:	PubMed
Product Detail:	IGSF21 is a 467 amino acid secreted protein that contains two Ig-like (immunoglobulin-like) domains and is a member of the immunoglobulin superfamily. Members of this family of proteins usually localize to the cell membrane, and may act as receptors in the immune response pathways. The gene encoding IGSF21 maps to human chromosome 1p36.13 and mouse chromosome 4 D3. Human chromosome 1 spans 260 million base pairs, contains over 3,000 genes and comprises nearly 8% of the human genome. A large

number of disease-associated genes are associated with chromosome 1, including those that are involved in familial adenomatous polyposis, Stickler syndrome, Parkinson's disease, Gaucher disease, schizophrenia and Usher syndrome. Aberrations in chromosome 1 are found in a variety of cancers, including head and neck cancer, malignant melanoma and multiple myeloma.

Subcellular Location:

Secreted

Similarity:

Contains 2 Ig-like (immunoglobulin-like) domains.

SWISS:

Q96ID5

Gene ID:

84966

Database links:

[Entrez Gene: 84966](#)Human

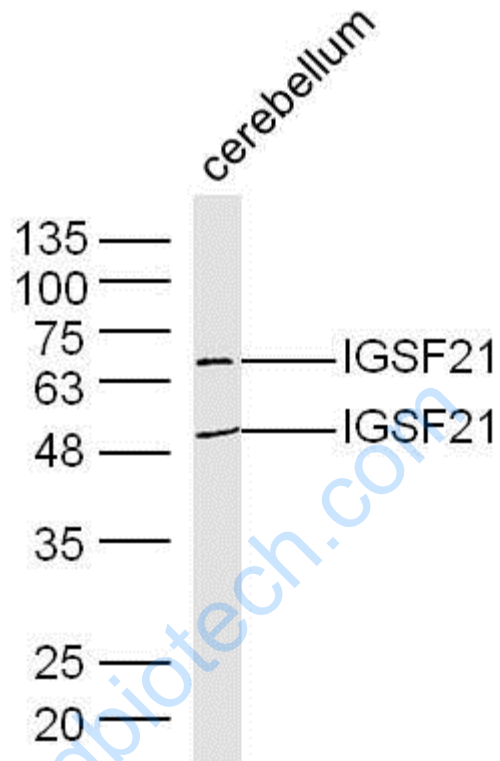
[SwissProt: Q96ID5](#)Human

[Unigene: 212511](#)Human

Important Note:

This product as supplied is intended for research use only, not for use in human, therapeutic or diagnostic applications.

Picture:



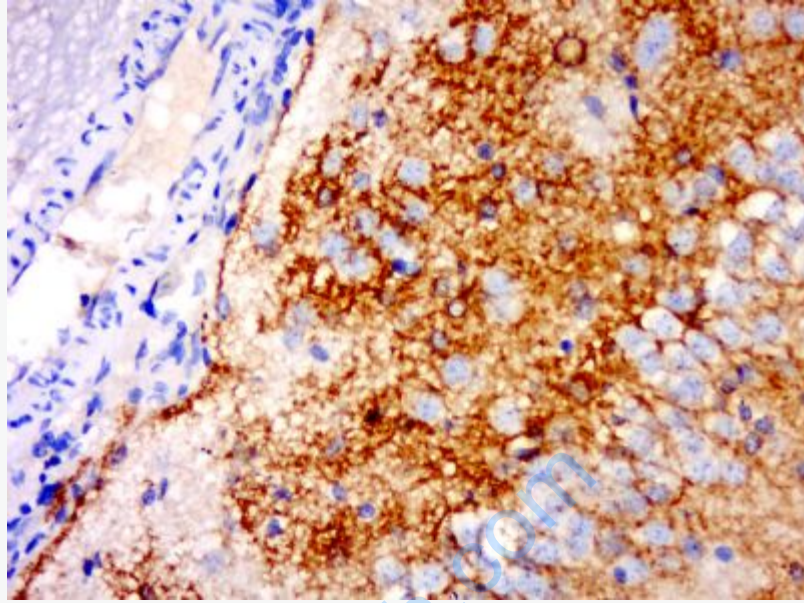
Sample: Cerebellum (mouse) Lysate at 40 ug

Primary: Anti- IGSF21(SL9204R) at 1/200 dilution

Secondary: HRP conjugated Goat-Anti-rabbit IgG (SL9204R) at 1/5000 dilution

Predicted band size: 49 kD

Observed band size: 49/69 kD



Paraformaldehyde-fixed, paraffin embedded (rat brain); Antigen retrieval by boiling in sodium citrate buffer (pH6.0) for 15min; Block endogenous peroxidase by 3% hydrogen peroxide for 20 minutes; Blocking buffer (normal goat serum) at 37°C for 30min; Antibody incubation with (IGSF21) Polyclonal Antibody, Unconjugated (SL9204R) at 1:500 overnight at 4°C, followed by a conjugated secondary (sp-0023) for 20 minutes and DAB staining.