



Rabbit Anti-SLC47A1 antibody

SL9284R

Product Name:	SLC47A1
Chinese Name:	溶质载体蛋白家族47成员A1抗体
Alias:	1A1; AIM 1; AIM1; MATP; Melanoma antigen AIM1; Membrane associated transporter; Membrane associated transporter protein; Membrane-associated transporter protein; Protein AIM 1; Protein AIM-1; Protein AIM1; S45A2_HUMAN; SHEP5; SLC45A2; Solute carrier family 45 member 2; Underwhite.
Organism Species:	Rabbit
Clonality:	Polyclonal
React Species:	Human,Mouse,Rat,Cow,Horse,Rabbit,Sheep,
Applications:	WB=1:500-2000ELISA=1:500-1000IHC-P=1:400-800IHC-F=1:400-800ICC=1:100-500IF=1:100-500 (Paraffin sections need antigen repair) not yet tested in other applications. optimal dilutions/concentrations should be determined by the end user.
Molecular weight:	58kDa
Cellular localization:	cytoplasmicThe cell membrane
Form:	Lyophilized or Liquid
Concentration:	1mg/ml
immunogen:	KLH conjugated synthetic peptide derived from human SLC47A1:211-310/530
Lsotype:	IgG
Purification:	affinity purified by Protein A
Storage Buffer:	0.01M TBS(pH7.4) with 1% BSA, 0.03% Proclin300 and 50% Glycerol.
Storage:	Store at -20 °C for one year. Avoid repeated freeze/thaw cycles. The lyophilized antibody is stable at room temperature for at least one month and for greater than a year when kept at -20°C. When reconstituted in sterile pH 7.4 0.01M PBS or diluent of antibody the antibody is stable for at least two weeks at 2-4 °C.
PubMed:	PubMed
Product Detail:	This gene is located within the Smith-Magenis syndrome region on chromosome 17. It encodes a protein of unknown function. [provided by RefSeq, Jul 2008] Function:

Solute transporter for tetraethylammonium (TEA), 1-methyl-4-phenylpyridinium (MPP), cimetidine, N-methylnicotinamide (NMN), metformin, creatinine, guanidine, procainamide, topotecan, estrone sulfate, acyclovir, ganciclovir and also the zwitterionic cephalosporin, cephalixin and cephradine. Seems to also play a role in the uptake of oxaliplatin (a new platinum anticancer agent). Able to transport paraquat (PQ or N,N-dimethyl-4,4'-bipyridinium); a widely used herbicide. Responsible for the secretion of cationic drugs across the brush border membranes.

Subcellular Location:

Cell membrane. Predominantly localized at the plasma membrane but also found in intracellular organelles.

Tissue Specificity:

Expressed in adrenal gland, and to a lower extent in liver, skeletal muscle and kidney (especially found in luminal membranes of the urinary tubules, bile caniculi and brush border membranes).

Similarity:

Belongs to the multi antimicrobial extrusion (MATE) (TC 2.A.66.1) family.

SWISS:

Q96FL8

Gene ID:

55244

Database links:

[Entrez Gene: 55244](#) Human

[Omim: 609832](#) Human

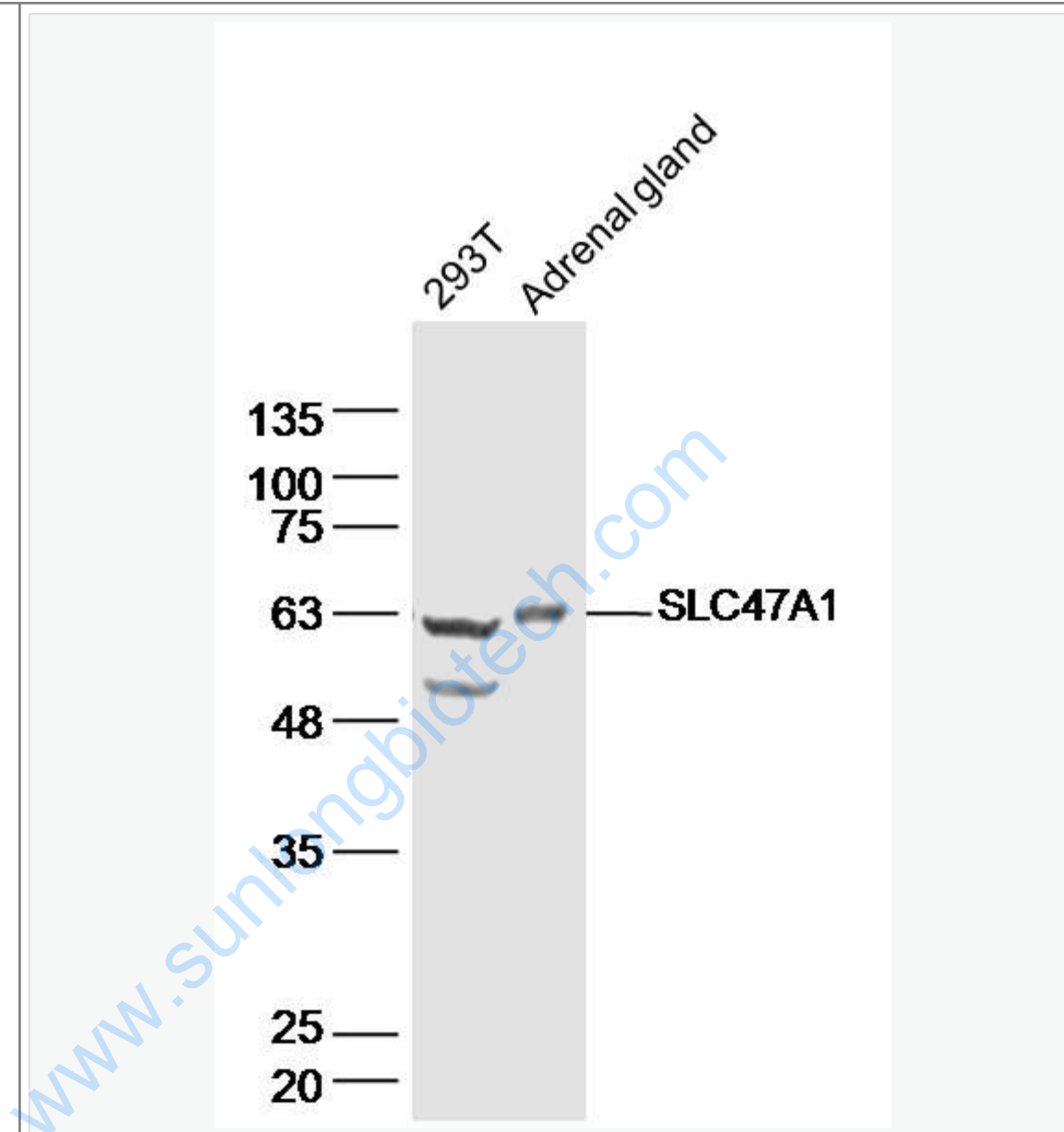
[SwissProt: Q96FL8](#) Human

[Unigene: 232054](#) Human

Important Note:

This product as supplied is intended for research use only, not for use in human, therapeutic or diagnostic applications.

Picture:



Sample:

293T Cell (Human) Lysate at 40 ug

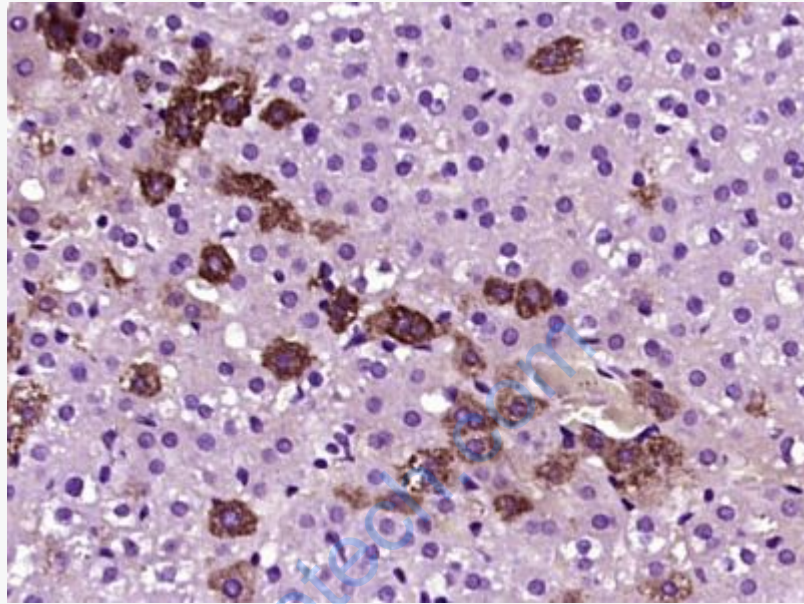
Adrenal gland (Mouse) Lysate at 40 ug

Primary: Anti-SLC47A1 (SL9284R) at 1/300 dilution

Secondary: IRDye800CW Goat Anti-Rabbit IgG at 1/20000 dilution

Predicted band size: 58 kD

Observed band size: 62 kD



Paraformaldehyde-fixed, paraffin embedded (rat liver tissue); Antigen retrieval by boiling in sodium citrate buffer (pH6.0) for 15min; Block endogenous peroxidase by 3% hydrogen peroxide for 20 minutes; Blocking buffer (normal goat serum) at 37°C for 30min; Antibody incubation with (SLC47A1) Polyclonal Antibody, Unconjugated (SL9284R) at 1:400 overnight at 4°C, followed by operating according to SP Kit(Rabbit) (sp-0023) instructions and DAB staining.