



## Rabbit Anti-PACRG antibody

SL9289R

<b>Product Name:</b>	PACRG
<b>Chinese Name:</b>	麻疯病和帕金森氏病共同调节蛋白抗体
<b>Alias:</b>	GLUP; Molecular chaperone/chaperonin binding protein; PARK 2 co regulated; PARK 2 coregulated; PARK2 co regulated; PARK2 coregulated; PARK2CRG; Parkin co regulated gene protein; Parkin Co-regulated Gene; Parkin coregulated gene protein; RP3 495O10.2; PACRG_HUMAN.
<b>Organism Species:</b>	Rabbit
<b>Clonality:</b>	Polyclonal
<b>React Species:</b>	Human,Mouse,Rat,Dog,Horse,Rabbit,Sheep,Zebrafish
<b>Applications:</b>	ELISA=1:500-1000IHC-P=1:400-800IHC-F=1:400-800IF=1:50-200 (Paraffin sections need antigen repair) not yet tested in other applications. optimal dilutions/concentrations should be determined by the end user.
<b>Molecular weight:</b>	33kDa
<b>Cellular localization:</b>	The nucleuscytoplasmic
<b>Form:</b>	Lyophilized or Liquid
<b>Concentration:</b>	1mg/ml
<b>immunogen:</b>	KLH conjugated synthetic peptide derived from human PACRG:41-140/296
<b>Lsotype:</b>	IgG
<b>Purification:</b>	affinity purified by Protein A
<b>Storage Buffer:</b>	0.01M TBS(pH7.4) with 1% BSA, 0.03% Proclin300 and 50% Glycerol.
<b>Storage:</b>	Store at -20 °C for one year. Avoid repeated freeze/thaw cycles. The lyophilized antibody is stable at room temperature for at least one month and for greater than a year when kept at -20°C. When reconstituted in sterile pH 7.4 0.01M PBS or diluent of antibody the antibody is stable for at least two weeks at 2-4 °C.
<b>PubMed:</b>	<a href="#">PubMed</a>
<b>Product Detail:</b>	The deduced 257 amino acid protein PACRG (Parkin co-regulated gene) shows potential links to the ubiquitin/proteasome system. PACRG and Parkin are attached in a head-to-head arrangement on opposite DNA strands and share a common 5' flanking promoter region. The PACRG gene maps to chromosome 6q26; Northern blot analysis detects

PACRG expression in all tissues examined except placenta. Using a positional cloning strategy in 197 Vietnamese leprosy simplex families (i.e. families with two unaffected parents and one affected child), significant connections between leprosy and 17 markers in the 5' regulatory region that PARK2 and PACRG share were observed. Possession of two or more of the 17 risk alleles is highly predictive of leprosy. PACRG is a gene located very close to parkin, in reverse orientation on the chromosome. It is thought to be co-transcribed with parkin by a bi-directional promoter between the two genes.

**Function:**

PACRG is a gene located very close to parkin, in reverse orientation on the chromosome. It is thought to be co-transcribed with parkin by a bi-directional promoter between the two genes.

**Subunit:**

Forms a large molecular chaperone complex containing heat shock proteins 70 and 90 and chaperonin components. Interacts with STIPI, PARK2, GPR37, HSPA8, TCP1/CCT1, CCT2, CCT3, CCT4, CCT5, CCT6A, CCT7, CCT8. Interacts with MEIG1 (By similarity).

**Tissue Specificity:**

Expressed in all immune tissues, spleen, lymph nodes, thymus, tonsils, leukocyte and bone marrow. Expressed also in heart, brain, skeletal muscle, kidney, lung and pancreas. Expressed in primary Schwann cells and very weakly by monocyte-derived macrophages the primary host cells of Mycobacterium leprae, the causative agent of leprosy. Component of Lewy bodies, intraneuronal inclusions found in the brain of Parkinson disease patients.

**SWISS:**

Q96M98

**Gene ID:**

135138

**Database links:**

[Entrez Gene: 135138](#)Human

[Entrez Gene: 69310](#)Mouse

[Entrez Gene: 499021](#)Rat

[Omim: 608427](#)Human

[SwissProt: Q96M98](#)Human

[SwissProt: Q9DAK2](#)Mouse

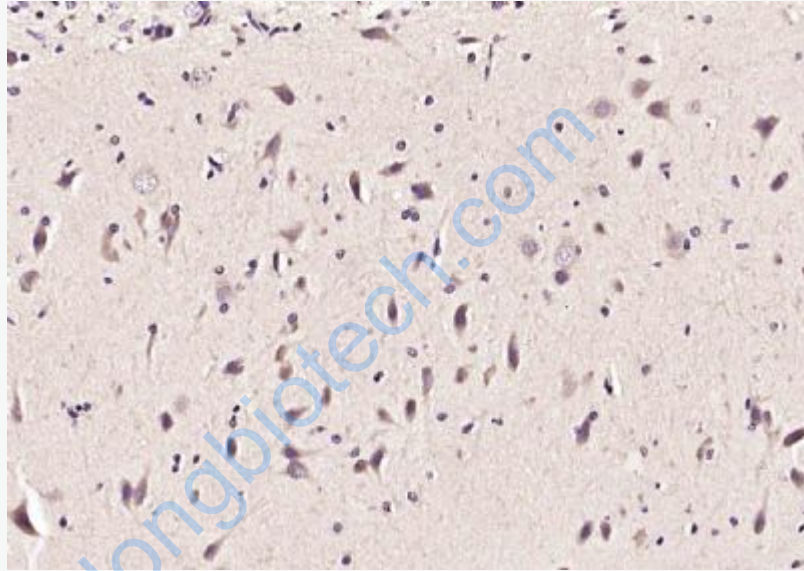
[Unigene: 25791](#)Human

[Unigene: 18889](#)Mouse

[Unigene: 14085](#)Rat

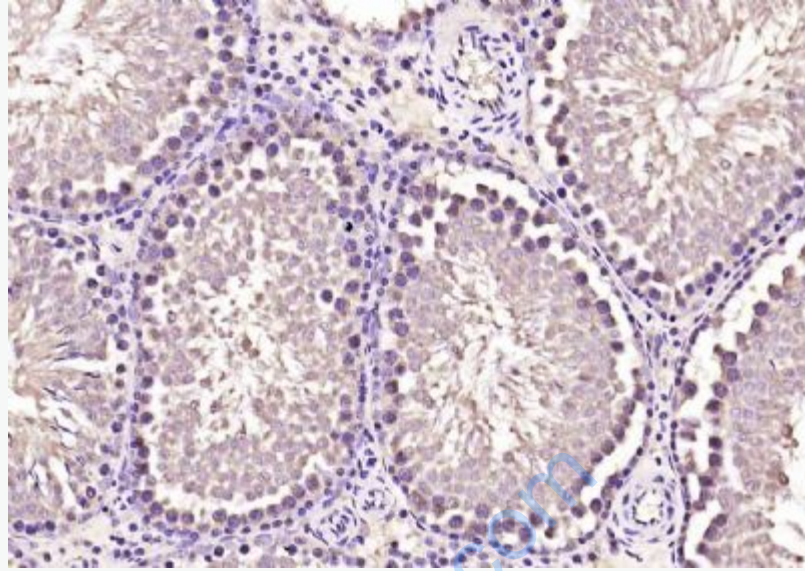
**Important Note:**

This product as supplied is intended for research use only, not for use in human, therapeutic or diagnostic applications.



**Picture:**

Paraformaldehyde-fixed, paraffin embedded (rat brain); Antigen retrieval by boiling in sodium citrate buffer (pH6.0) for 15min; Block endogenous peroxidase by 3% hydrogen peroxide for 20 minutes; Blocking buffer (normal goat serum) at 37°C for 30min; Antibody incubation with (PACRG) Polyclonal Antibody, Unconjugated (SL9289R) at 1:200 overnight at 4°C, followed by operating according to SP Kit(Rabbit) (sp-0023) instructions and DAB staining.



Paraformaldehyde-fixed, paraffin embedded (rat testis); Antigen retrieval by boiling in sodium citrate buffer (pH6.0) for 15min; Block endogenous peroxidase by 3% hydrogen peroxide for 20 minutes; Blocking buffer (normal goat serum) at 37°C for 30min; Antibody incubation with (PACRG) Polyclonal Antibody, Unconjugated (SL9289R) at 1:200 overnight at 4°C, followed by operating according to SP Kit(Rabbit) (sp-0023) instructions and DAB staining.