



Rabbit Anti-BTBD1 antibody

SL9294R

Product Name:	BTBD1
Chinese Name:	BTB/POZ结构域蛋白1(丙型肝炎病毒的NS5A反转录蛋白8)抗体
Alias:	BTB (POZ) domain containing 1; BTB domain containing 1; BTB/POZ domain containing protein 1; BTBD 1; BTBD1; C15orf1; HCV NS5A transactivated protein 8; Hepatitis C virus NS5A transactivated protein 8; NS5ATP8; BTBD1_HUMAN.
Organism Species:	Rabbit
Clonality:	Polyclonal
React Species:	Human,Mouse,Rat,Dog,Pig,Cow,Horse,Sheep,
Applications:	WB=1:500-2000ELISA=1:500-1000IHC-P=1:400-800IHC-F=1:400-800IF=1:50-200 (Paraffin sections need antigen repair) not yet tested in other applications. optimal dilutions/concentrations should be determined by the end user.
Molecular weight:	53kDa
Cellular localization:	cytoplasmic
Form:	Lyophilized or Liquid
Concentration:	1mg/ml
immunogen:	KLH conjugated synthetic peptide derived from human BTBD1:101-200/482
Lsotype:	IgG
Purification:	affinity purified by Protein A
Storage Buffer:	0.01M TBS(pH7.4) with 1% BSA, 0.03% Proclin300 and 50% Glycerol.
Storage:	Store at -20 °C for one year. Avoid repeated freeze/thaw cycles. The lyophilized antibody is stable at room temperature for at least one month and for greater than a year when kept at -20°C. When reconstituted in sterile pH 7.4 0.01M PBS or diluent of antibody the antibody is stable for at least two weeks at 2-4 °C.
PubMed:	PubMed
Product Detail:	BTBD1 contains a proline-rich region and a BTB/POZ domain which are typically involved in protein-protein interactions. The C-terminus of BTBD1 binds topoisomerase I and BTBD1 also interacts with TRIM5 isoform Delta. BTBD1 localizes to cytoplasmic bodies and is essential for myogenic differentiation.

Function:

Probable substrate-specific adapter of an E3 ubiquitin-protein ligase complex which mediates the ubiquitination and subsequent proteasomal degradation of target proteins.

Subunit:

Interacts with topoisomerase 1 and with TRIM5 isoform Delta. Interacts with CUL3.

Subcellular Location:

Cytoplasm, P-body. Cytoplasmic bodies.

Tissue Specificity:

Ubiquitous; higher levels in heart and skeletal muscle.

Similarity:

Contains 1 BTB (POZ) domain.

SWISS:

Q9BSF8

Gene ID:

84280

Database links:

[Entrez Gene: 84280](#)Human

[Entrez Gene: 68815](#)Mouse

[Entrez Gene: 308890](#)Rat

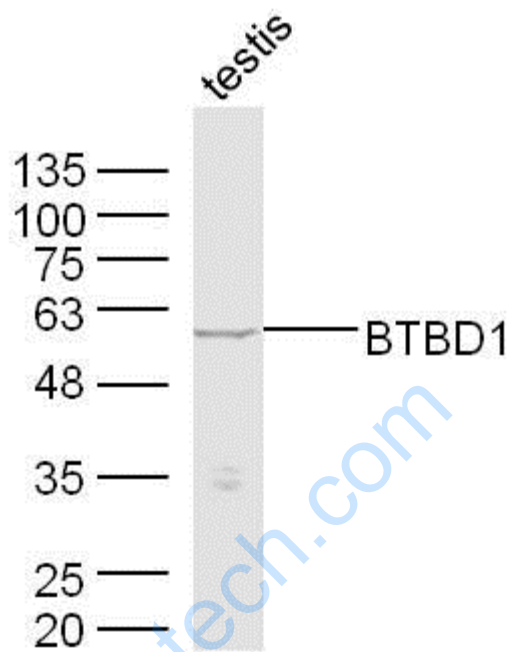
[SwissProt: Q9BSF8](#)Human

[SwissProt: Q80X66](#)Mouse

Important Note:

This product as supplied is intended for research use only, not for use in human, therapeutic or diagnostic applications.

Picture:



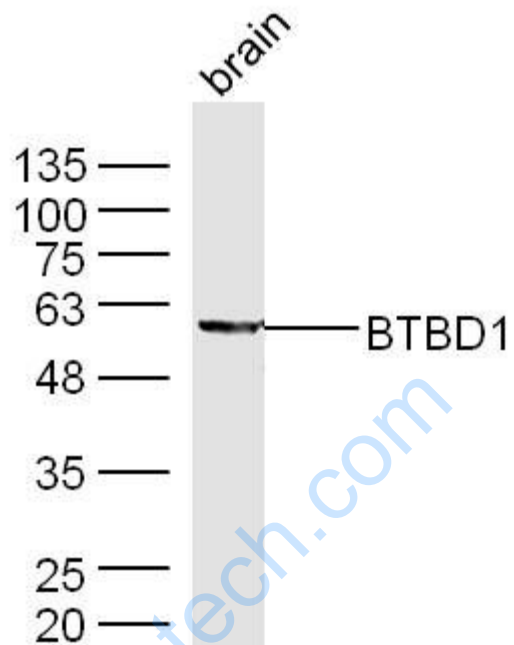
Sample: Testis (Mouse) Lysate at 40 ug

Primary: Anti-BTBD1 (SL9294R) at 1/300 dilution

Secondary: IRDye800CW Goat Anti-Rabbit IgG at 1/20000 dilution

Predicted band size: 53 kD

Observed band size: 53 kD



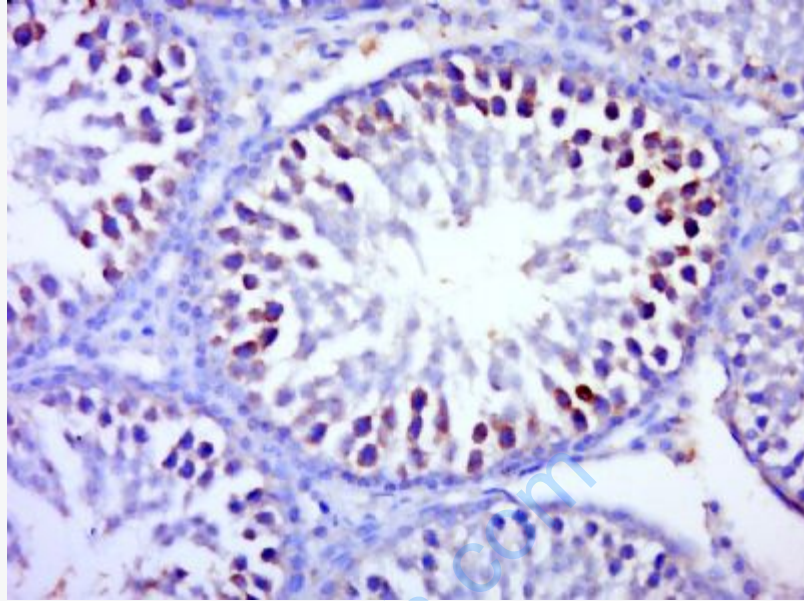
Sample: Brain (Mouse) Lysate at 40 ug

Primary: Anti-BTBD1 (SL9294R) at 1/300 dilution

Secondary: IRDye800CW Goat Anti-Rabbit IgG at 1/20000 dilution

Predicted band size: 53 kD

Observed band size: 53 kD



Paraformaldehyde-fixed, paraffin embedded (rat testis); Antigen retrieval by boiling in sodium citrate buffer (pH6.0) for 15min; Block endogenous peroxidase by 3% hydrogen peroxide for 20 minutes; Blocking buffer (normal goat serum) at 37°C for 30min; Antibody incubation with (BTBD1) Polyclonal Antibody, Unconjugated (SL9294R) at 1:500 overnight at 4°C, followed by a conjugated secondary (sp-0023) for 20 minutes and DAB staining.