



Rabbit Anti-Proteasome 20S alpha 6 antibody

SL9355R

Product Name:	Proteasome 20S alpha 6
Chinese Name:	蛋白酶体PSM α 6抗体
Alias:	27 kDa prosomal protein; HC2; IOTA; Macropain iota chain; Macropain subunit iota; Multicatalytic endopeptidase complex iota chain; p27K; PROS 27; PROS27; Prosomal P27K protein; Proteasome (prosome macropain) subunit alpha type 6; Proteasome iota chain; Proteasome subunit alpha type 1; Proteasome subunit alpha type 6; Proteasome subunit iota; PSMA6; PSA6 HUMAN.
Organism Species:	Rabbit
Clonality:	Polyclonal
React Species:	Human,Mouse,Rat,Chicken,Dog,Pig,Horse,Sheep,
Applications:	ELISA=1:500-1000IHC-P=1:400-800IHC-F=1:400-800IF=1:50-200 (Paraffin sections need antigen repair) not yet tested in other applications. optimal dilutions/concentrations should be determined by the end user.
Molecular weight:	27kDa
Cellular localization:	The nucleuscytoplasmic
Form:	Lyophilized or Liquid
Concentration:	1mg/ml
immunogen:	KLH conjugated synthetic peptide derived from human Proteasome 20S alpha 6:1-100/246
Lsotype:	IgG
Purification:	affinity purified by Protein A
Storage Buffer:	0.01M TBS(pH7.4) with 1% BSA, 0.03% Proclin300 and 50% Glycerol.
Storage:	Store at -20 °C for one year. Avoid repeated freeze/thaw cycles. The lyophilized antibody is stable at room temperature for at least one month and for greater than a year when kept at -20°C. When reconstituted in sterile pH 7.4 0.01M PBS or diluent of antibody the antibody is stable for at least two weeks at 2-4 °C.
PubMed:	PubMed
Product Detail:	The gene encodes a 246-amino acid polypeptide containing an RNA binding motif, a putative nuclear localization signal, and phosphorylation sites. The alpha subunits

comprises the outer rings of the proteasome. Some alpha subunits contain a functional nuclear localization signal; proteasomes are found in both the nuclear and cytoplasmic compartments of the cell. Alpha subunits may constitute a physical barrier that limits access of cytosolic proteins into the inner proteolytic chamber.

Function:

The proteasome is a multicatalytic proteinase complex which is characterized by its ability to cleave peptides with Arg, Phe, Tyr, Leu, and Glu adjacent to the leaving group at neutral or slightly basic pH. The proteasome has an ATP-dependent proteolytic activity.

Subunit:

The 26S proteasome consists of a 20S proteasome core and two 19S regulatory subunits. The 20S proteasome core is composed of 28 subunits that are arranged in four stacked rings, resulting in a barrel-shaped structure. The two end rings are each formed by seven alpha subunits, and the two central rings are each formed by seven beta subunits. The catalytic chamber with the active sites is on the inside of the barrel.

Subcellular Location:

Cytoplasm. Nucleus. Cytoplasm, P-body (By similarity). Note=Co-localizes with TRIM5 in the cytoplasmic bodies (By similarity).

Similarity:

Belongs to the peptidase T1A family.

SWISS:

P60900

Gene ID:

5687

Database links:

[Entrez Gene: 5687](#)Human

[Entrez Gene: 26443](#)Mouse

[Entrez Gene: 29673](#)Rat

[Omin: 602855](#)Human

[SwissProt: P60900](#)Human

[SwissProt: Q9QUM9](#)Mouse

[SwissProt: P60901](#)Rat

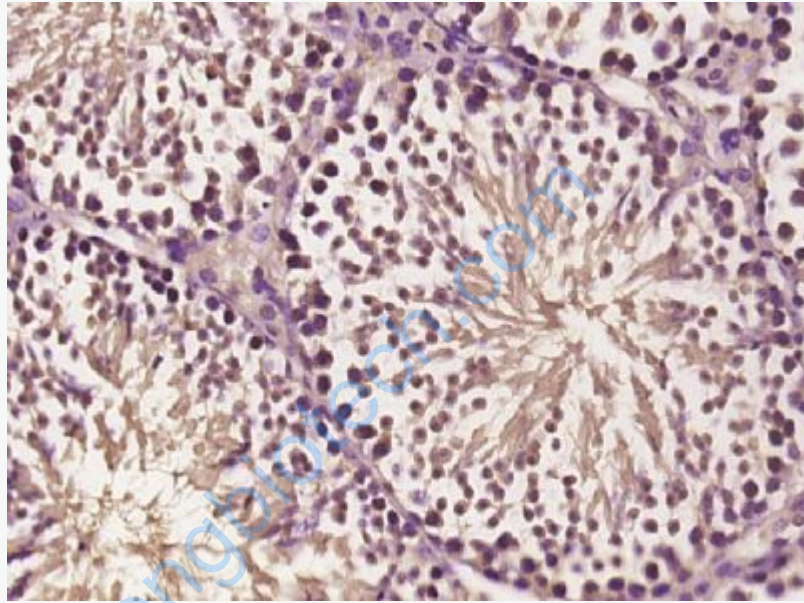
[Unigene: 446260](#)Human

[Unigene: 30210](#)Mouse

[Unigene: 107278Rat](#)

Important Note:

This product as supplied is intended for research use only, not for use in human, therapeutic or diagnostic applications.



Picture:

Paraformaldehyde-fixed, paraffin embedded (mouse testis tissue); Antigen retrieval by boiling in sodium citrate buffer (pH6.0) for 15min; Block endogenous peroxidase by 3% hydrogen peroxide for 20 minutes; Blocking buffer (normal goat serum) at 37°C for 30min; Antibody incubation with (PSMA6) Polyclonal Antibody, Unconjugated (SL9355R) at 1:400 overnight at 4°C, followed by operating according to SP Kit(Rabbit) (sp-0023) instructions and DAB staining.