



Rabbit Anti-ODF3B antibody

SL9369R

Product Name:	ODF3B
Chinese Name:	外致密纤维蛋白3B抗体
Alias:	ODF3B; ODF3B_HUMAN; Odf3l3; Outer dense fiber of sperm tails 3B; Outer dense fiber protein 3-like protein 3; Outer dense fiber protein 3B.
Organism Species:	Rabbit
Clonality:	Polyclonal
React Species:	Human,Mouse,Rat,Pig,
Applications:	WB=1:500-2000ELISA=1:500-1000 not yet tested in other applications. optimal dilutions/concentrations should be determined by the end user.
Molecular weight:	27kDa
Cellular localization:	The nucleuscytoplasmic
Form:	Lyophilized or Liquid
Concentration:	1mg/ml
immunogen:	KLH conjugated synthetic peptide derived from human ODF3B:51-150/253
Lsotype:	IgG
Purification:	affinity purified by Protein A
Storage Buffer:	0.01M TBS(pH7.4) with 1% BSA, 0.03% Proclin300 and 50% Glycerol.
Storage:	Store at -20 °C for one year. Avoid repeated freeze/thaw cycles. The lyophilized antibody is stable at room temperature for at least one month and for greater than a year when kept at -20°C. When reconstituted in sterile pH 7.4 0.01M PBS or diluent of antibody the antibody is stable for at least two weeks at 2-4 °C.
PubMed:	PubMed
Product Detail:	ODF3B, also known as ODF3L3 (outer dense fiber protein 3-like protein 3), is a 253 amino acid protein belonging to the ODF3 family. Existing as two isoforms produced by alternative splicing, ODF3B contains one DUF1309 repeat. The gene that encodes ODF3B maps to human chromosome 22, which contains over 500 genes and about 49 million bases. Being the second smallest human chromosome, 22 contains a surprising variety of interesting genes. Phelan-McDermid syndrome, Neurofibromatosis type 2 and autism are associated with chromosome 22. A schizophrenia susceptibility locus

has been identified on chromosome 22 and studies show that 22q11 deletion symptoms include a high incidence of schizophrenia. Translocations between chromosomes 9 and 22 may lead to the formation of the Philadelphia Chromosome and the subsequent production of the novel fusion protein, BCR-Abl, a potent cell proliferation activator found in several types of leukemia.

Similarity:

Belongs to the ODF3 family.

Contains 1 STPGR (Sperm-tail PG-rich) repeat.

SWISS:

A8MYP8

Gene ID:

440836

Database links:

[Entrez Gene: 440836](#)Human

[Entrez Gene: 70113](#)Mouse

[SwissProt: A8MYP8](#)Human

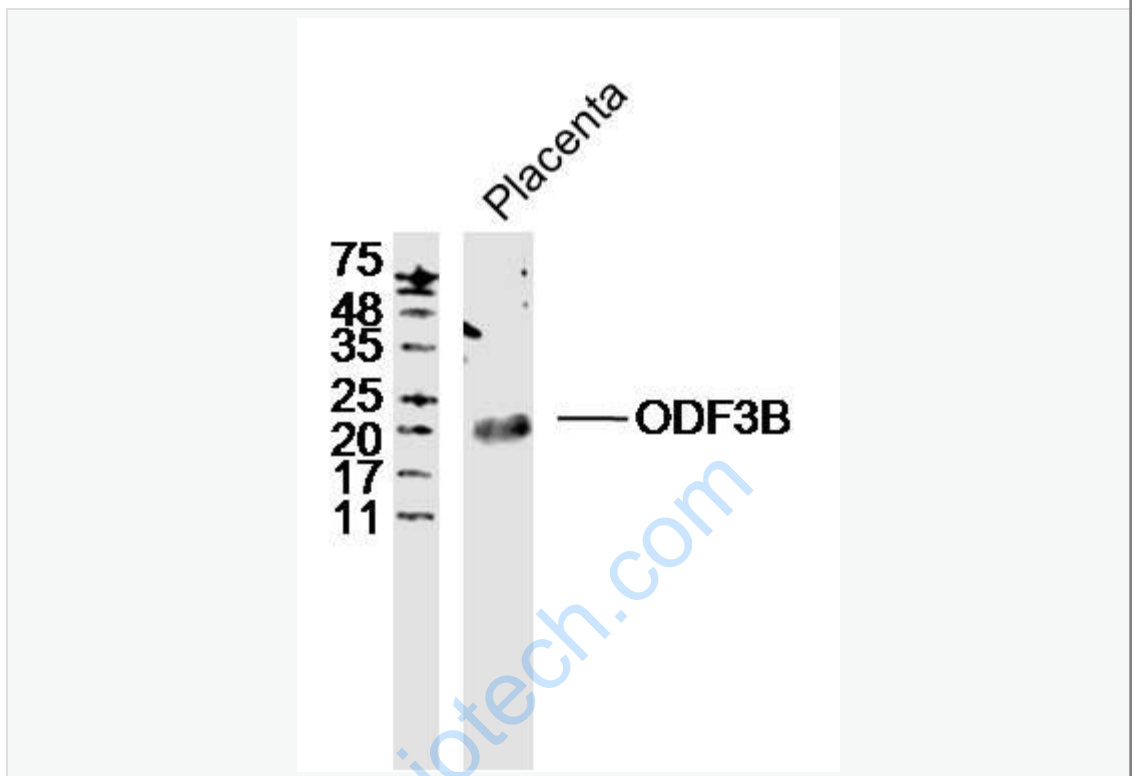
[SwissProt: Q5M8M2](#)Mouse

[Unigene: 531314](#)Human

Important Note:

This product as supplied is intended for research use only, not for use in human, therapeutic or diagnostic applications.

Picture:



Sample: Placenta (Mouse) Lysate at 40 ug

Primary: Anti-ODF3B (SL9369R) at 1/300 dilution

Secondary: IRDye800CW Goat Anti-Rabbit IgG at 1/20000 dilution

Predicted band size: 27 kD

Observed band size: 23 kD