



## Rabbit Anti-TSPAN1 antibody

SL9410R

<b>Product Name:</b>	TSPAN1
<b>Chinese Name:</b>	四分子交联体1抗体(四旋蛋白)
<b>Alias:</b>	Tetraspanin TM4 C; Tetraspanin TM4C; NET 1; NET1; Tetraspan 1; Tetraspan NET 1; Tetraspan NET1; Tetraspanin 1; TM4C; TM4SF; TSPAN 1; Tspan1; TSN1_HUMAN.
<b>Organism Species:</b>	Rabbit
<b>Clonality:</b>	Polyclonal
<b>React Species:</b>	Human,
<b>Applications:</b>	WB=1:500-2000ELISA=1:500-1000IHC-P=1:400-800 (Paraffin sections need antigen repair) not yet tested in other applications. optimal dilutions/concentrations should be determined by the end user.
<b>Molecular weight:</b>	26kDa
<b>Cellular localization:</b>	cytoplasmicThe cell membrane
<b>Form:</b>	Lyophilized or Liquid
<b>Concentration:</b>	1mg/ml
<b>immunogen:</b>	KLH conjugated synthetic peptide derived from human TSPAN1:151-250/241<Extracellular>
<b>Lsotype:</b>	IgG
<b>Purification:</b>	affinity purified by Protein A
<b>Storage Buffer:</b>	0.01M TBS(pH7.4) with 1% BSA, 0.03% Proclin300 and 50% Glycerol.
<b>Storage:</b>	Store at -20 °C for one year. Avoid repeated freeze/thaw cycles. The lyophilized antibody is stable at room temperature for at least one month and for greater than a year when kept at -20°C. When reconstituted in sterile pH 7.4 0.01M PBS or diluent of antibody the antibody is stable for at least two weeks at 2-4 °C.
<b>PubMed:</b>	<a href="#">PubMed</a>
<b>Product Detail:</b>	The protein encoded by this gene is a member of the transmembrane 4 superfamily, also known as the tetraspanin family. Most of these members are cell-surface proteins that are characterized by the presence of four hydrophobic domains. The proteins mediate signal transduction events that play a role in the regulation of cell development, activation, growth and motility.

**Subcellular Location:**

Lysosome membrane; Multi-pass membrane protein.

**Similarity:**

Belongs to the tetraspanin (TM4SF) family.

**SWISS:**

O60635

**Gene ID:**

10103

**Database links:**

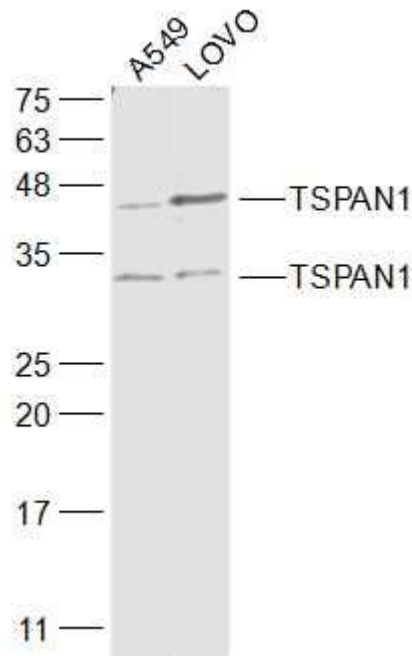
[Entrez Gene: 10103](#)Human

[Omim: 613170](#)Human

[SwissProt: O60635](#)Human

**Important Note:**

This product as supplied is intended for research use only, not for use in human, therapeutic or diagnostic applications.

**Picture:**

Sample:

A549(Human) Cell Lysate at 30 ug

LOVO(Human) Cell Lysate at 30 ug

Primary: Anti-TSPAN1 (SL9410R) at 1/1000 dilution

Secondary: IRDye800CW Goat Anti-Rabbit IgG at 1/20000 dilution

Predicted band size: 26 kD

Observed band size: 31/46 kD

[www.sunlongbiotech.com](http://www.sunlongbiotech.com)