



## Rabbit Anti-SLC2A4RG antibody

SL9457R

<b>Product Name:</b>	SLC2A4RG
<b>Chinese Name:</b>	葡萄糖Transporter4增强因子抗体
<b>Alias:</b>	GEF; GLUT4 enhancer factor; HDBP 1; HDBP-1; HDBP1; Huntington disease gene regulatory region binding protein 1; Huntington disease gene regulatory region-binding protein 1; S2A4R_HUMAN; Si 1 2 19; Si 1 2; SLC2A4 regulator; SLC2A4RG; Zinc finger protein 2 5 Glut4 enhancer factor.
<b>Organism Species:</b>	Rabbit
<b>Clonality:</b>	Polyclonal
<b>React Species:</b>	Human,Mouse,Cow,Sheep,
<b>Applications:</b>	WB=1:500-2000ELISA=1:500-1000IHC-P=1:400-800IHC-F=1:400-800IF=1:50-200 (Paraffin sections need antigen repair) not yet tested in other applications. optimal dilutions/concentrations should be determined by the end user.
<b>Molecular weight:</b>	41kDa
<b>Cellular localization:</b>	The nucleuscytoplasmic
<b>Form:</b>	Lyophilized or Liquid
<b>Concentration:</b>	1mg/ml
<b>immunogen:</b>	KLH conjugated synthetic peptide derived from human SLC2A4RG/GLUT4 enhancer factor:301-387/387
<b>Lsotype:</b>	IgG
<b>Purification:</b>	affinity purified by Protein A
<b>Storage Buffer:</b>	0.01M TBS(pH7.4) with 1% BSA, 0.03% Proclin300 and 50% Glycerol.
<b>Storage:</b>	Store at -20 °C for one year. Avoid repeated freeze/thaw cycles. The lyophilized antibody is stable at room temperature for at least one month and for greater than a year when kept at -20°C. When reconstituted in sterile pH 7.4 0.01M PBS or diluent of antibody the antibody is stable for at least two weeks at 2-4 °C.
<b>PubMed:</b>	<a href="#">PubMed</a>
<b>Product Detail:</b>	The protein encoded by this gene is a nuclear transcription factor involved in the activation of the solute carrier family 2 member 4 gene. The encoded protein interacts with another transcription factor, myocyte enhancer factor 2, to activate transcription of

this gene. [provided by RefSeq, Jul 2008].

**Function:**

Transcription factor involved in SLC2A4 and HD gene transactivation. Binds to the consensus sequence 5'-GCCGGCG-3'.

**Subunit:**

Interacts with MEF2A.

**Subcellular Location:**

Cytoplasm. Nucleus. Note=Shuttles between the cytoplasm and the nucleus.

**Tissue Specificity:**

According to PubMed:14630949, expressed in heart, skeletal muscle, liver, kidney and pancreas; undetectable in lung, placenta or brain. According to PubMed:14625278, ubiquitously expressed, with lowest expression in brain and ileum.

**Similarity:**

Contains 1 C2H2-type zinc finger.

**SWISS:**

Q9NR83

**Gene ID:**

56731

**Database links:**

[Entrez Gene: 56731](#)Human

[Oimim: 609493](#)Human

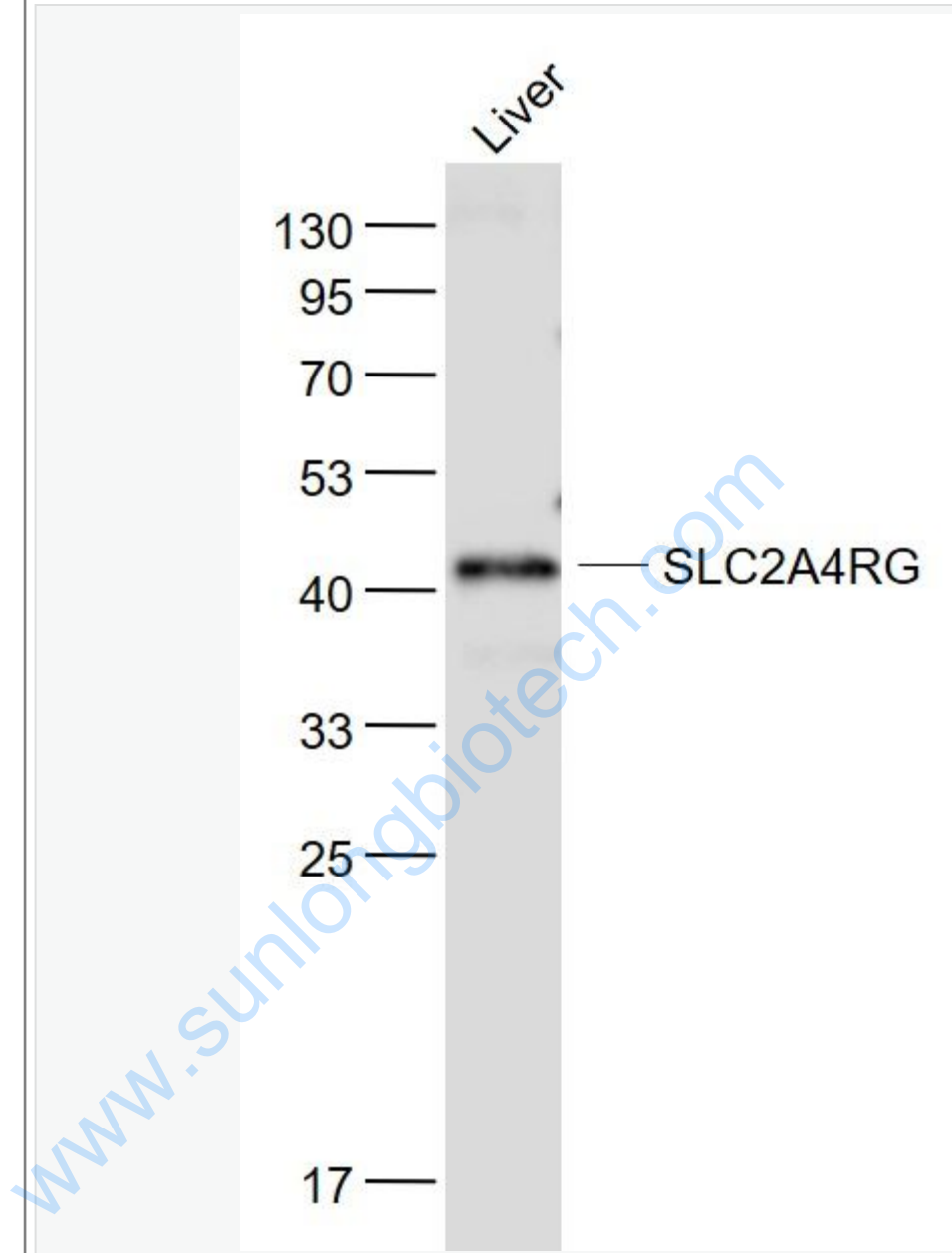
[SwissProt: Q9NR83](#)Human

[Unigene: 435126](#)Human

**Important Note:**

This product as supplied is intended for research use only, not for use in human, therapeutic or diagnostic applications.

Picture:



Sample:

Liver (Mouse) Lysate at 40 ug

Primary: Anti- SLC2A4RG (SL9457R) at 1/1000 dilution

Secondary: IRDye800CW Goat Anti-Rabbit IgG at 1/20000 dilution

Predicted band size: 41 kD

	Observed band size: 41 kD
--	---------------------------

[www.sunlongbiotech.com](http://www.sunlongbiotech.com)