



## Rabbit Anti-C6orf120 antibody

SL9534R

<b>Product Name:</b>	C6orf120
<b>Chinese Name:</b>	6号染色体开放阅读框120抗体
<b>Alias:</b>	bA160E12.4; Chromosome 6 open reading frame 120; Hypothetical protein LOC387263; UPF0669 protein C6orf120; CF120_HUMAN.
<b>Organism Species:</b>	Rabbit
<b>Clonality:</b>	Polyclonal
<b>React Species:</b>	Human,Mouse,Rat,Chicken,Pig,Cow,
<b>Applications:</b>	ELISA=1:500-1000IHC-P=1:400-800IHC-F=1:400-800ICC=1:100-500IF=1:100-500 (Paraffin sections need antigen repair) not yet tested in other applications. optimal dilutions/concentrations should be determined by the end user.
<b>Molecular weight:</b>	21kDa
<b>Cellular localization:</b>	Secretory protein
<b>Form:</b>	Lyophilized or Liquid
<b>Concentration:</b>	1mg/ml
<b>immunogen:</b>	KLH conjugated synthetic peptide derived from human C6orf120:1-100/191
<b>Lsotype:</b>	IgG
<b>Purification:</b>	affinity purified by Protein A
<b>Storage Buffer:</b>	0.01M TBS(pH7.4) with 1% BSA, 0.03% Proclin300 and 50% Glycerol.
<b>Storage:</b>	Store at -20 °C for one year. Avoid repeated freeze/thaw cycles. The lyophilized antibody is stable at room temperature for at least one month and for greater than a year when kept at -20°C. When reconstituted in sterile pH 7.4 0.01M PBS or diluent of antibody the antibody is stable for at least two weeks at 2-4 °C.
<b>PubMed:</b>	<a href="#">PubMed</a>
<b>Product Detail:</b>	Making up nearly 6% of the human genome, chromosome 6 contains around 1,200 genes within 170 million base pairs of sequence. Deletion of a portion of the q arm of chromosome 6 is associated with early onset intestinal cancer, suggesting the presence of a cancer susceptibility locus. Porphyria cutanea tarda is associated with chromosome 6 through the HFE gene which, when mutated, predisposes an individual to developing this porphyria. Notably, the PARK2 gene, which is associated with Parkinson's disease,

and the genes encoding the major histocompatibility complex proteins, which are key molecular components of the immune system and determine predisposition to rheumatic diseases, are also located on chromosome 6. Stickler syndrome, 21-hydroxylase deficiency and maple syrup urine disease are also associated with genes on chromosome 6. A bipolar disorder susceptibility locus has been identified on the q arm of chromosome 6. The C6orf120 gene product has been provisionally designated C6orf120 pending further characterization.

**Function:**

May be involved in induction of apoptosis in CD4(+) T-cells, but not CD8(+) T-cells or hepatocytes.

**Subcellular Location:**

Secreted. Note=Secreted by hepatocytes.

**Tissue Specificity:**

Mainly expressed in hepatocytes and some weak expression in germinal center cells of lymph nodes.

**Similarity:**

Belongs to the UPF0669 family.

**SWISS:**

Q7Z4R8

**Gene ID:**

387263

**Database links:**

[Entrez Gene: 387263](#)Human

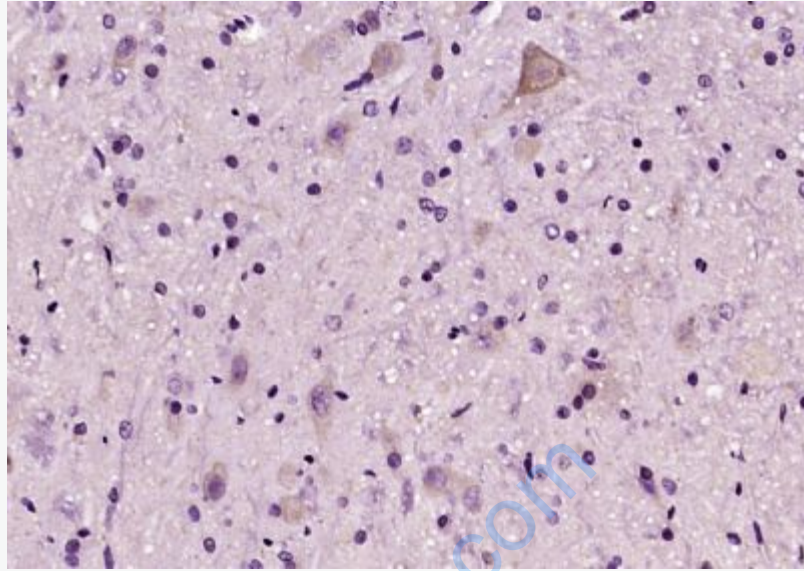
[Entrez Gene: 67912](#)Mouse

[SwissProt: Q7Z4R8](#)Human

[SwissProt: Q9DAY5](#)Mouse

**Important Note:**

This product as supplied is intended for research use only, not for use in human, therapeutic or diagnostic applications.



**Picture:**

Paraformaldehyde-fixed, paraffin embedded (rat brain tissue); Antigen retrieval by boiling in sodium citrate buffer (pH6.0) for 15min; Block endogenous peroxidase by 3% hydrogen peroxide for 20 minutes; Blocking buffer (normal goat serum) at 37°C for 30min; Antibody incubation with (C6orf120) Polyclonal Antibody, Unconjugated (SL9534R) at 1:200 overnight at 4°C, followed by operating according to SP Kit(Rabbit) (sp-0023) instructions and DAB staining.