



## Rabbit Anti-TNIP1 antibody

SL9568R

<b>Product Name:</b>	TNIP1
<b>Chinese Name:</b>	Tumour坏死因子诱导蛋白3相互作用蛋白1抗体
<b>Alias:</b>	ABIN 1; ABIN-1; abin1; HIV-1 Nef interacting protein (Nip40-1); TNFAIP3 interacting protein 1; HIV-1 Nef interacting protein; HIV-1 Nef-interacting protein; hVAN; KIAA0113; NAF 1; NAF-1; NAF1; Nef-associated factor 1; Nef-associated factor 1 SNP; Nip 40-1; Nip40-1; TNFAIP3 interacting protein 1; TNFAIP3-interacting protein 1; TNIP 1; TNIP-1; Tnip1; TNIP1_HUMAN; VAN; Virion associated nuclear shuttling protein; Virion-associated nuclear shuttling protein.
<b>Organism Species:</b>	Rabbit
<b>Clonality:</b>	Polyclonal
<b>React Species:</b>	Human,Mouse,Rat,Dog,Pig,Cow,Horse,Rabbit,
<b>Applications:</b>	ELISA=1:500-1000IHC-P=1:400-800IHC-F=1:400-800ICC=1:100-500IF=1:100-500 (Paraffin sections need antigen repair) not yet tested in other applications. optimal dilutions/concentrations should be determined by the end user.
<b>Molecular weight:</b>	72kDa
<b>Cellular localization:</b>	The nucleuscytoplasmic
<b>Form:</b>	Lyophilized or Liquid
<b>Concentration:</b>	1mg/ml
<b>immunogen:</b>	KLH conjugated synthetic peptide derived from human TNIP1:351-450/636
<b>Lsotype:</b>	IgG
<b>Purification:</b>	affinity purified by Protein A
<b>Storage Buffer:</b>	0.01M TBS(pH7.4) with 1% BSA, 0.03% Proclin300 and 50% Glycerol.
<b>Storage:</b>	Store at -20 $\Sigma$ C for one year. Avoid repeated freeze/thaw cycles. The lyophilized antibody is stable at room temperature for at least one month and for greater than a year when kept at -20 $\Sigma$ C. When reconstituted in sterile pH 7.4 0.01M PBS or diluent of antibody the antibody is stable for at least two weeks at 2-4 $\Sigma$ C.
<b>PubMed:</b>	<a href="#">PubMed</a>
<b>Product Detail:</b>	Abin-1 is a 636 amino acid protein that localizes to both the nucleus and the cytoplasm and is shuttled between the two intercellular regions in a CRM1-dependent manner.

Expressed ubiquitously with highest expression in spleen and skeletal muscle, Abin-1 interacts with A20 and, via this interaction, interferes with TRAF2-mediated transactivation signals and effectively inhibits TNF-induced NF- $\kappa$ B expression. Additionally, Abin-1 can be incorporated into HIV-1 virions and, if overexpressed, can inhibit viral replication. Abin-1 may also play an important role in the regulation of nuclear import and export activities. Multiple isoforms of Abin-1 exist due to alternative splicing events.

**Function:**

Interacts with zinc finger protein A20/TNFAIP3 and inhibits TNF-induced NF- $\kappa$ B-dependent gene expression by interfering with an RIP- or TRAF2-mediated transactivation signal (By similarity). Increases cell surface CD4(T4) antigen expression. Interacts with HIV-1 matrix protein and is packaged into virions and overexpression can inhibit viral replication. May regulate matrix nuclear localization, both nuclear import of PIC (Preintegration complex) and export of GAG polyprotein and viral genomic RNA during virion production.

**Subunit:**

Interacts with TNFAIP3 and IKBKG; facilitates TNFAIP3-mediated de-ubiquitination of NEMO/IKBKG. Interacts with HIV-1 matrix protein. Interacts with Shigella flexneri ipah9.8; the interaction promotes polyubiquitination of IKBKG. Interacts with polyubiquitin. Interacts with MAPK1, SELPLG and PIK3CD. Interacts with IKBKG (polyubiquitinated). Interacts with IRAK1 (polyubiquitinated). Interacts with MYD88; the interaction is indicative for participation in an activated TLR-signaling complex

**Subcellular Location:**

Cytoplasm. Nucleus. Note=Shuttles between the nucleus and cytoplasm in a CRM1-dependent manner.

**Tissue Specificity:**

Ubiquitous. Strongly expressed in peripheral blood lymphocytes, spleen and skeletal muscle, and is weakly expressed in the brain.

**Post-translational modifications:**

Phosphorylation at Tyr-552 by SRC-family kinases recruits phosphoinositide-3-kinase (PI3K) PIK3CD:p85 heterodimer which results in integrin activation and leukocyte adhesion to activated endothelium during inflammation.

**Similarity:**

Cytoplasm. Nucleus. Shuttles between the nucleus and cytoplasm in a CRM1-dependent manner.

**SWISS:**

Q15025

**Gene ID:**

10318

**Database links:**

[Entrez Gene: 10318](#)Human

[Oimim: 607714](#)Human

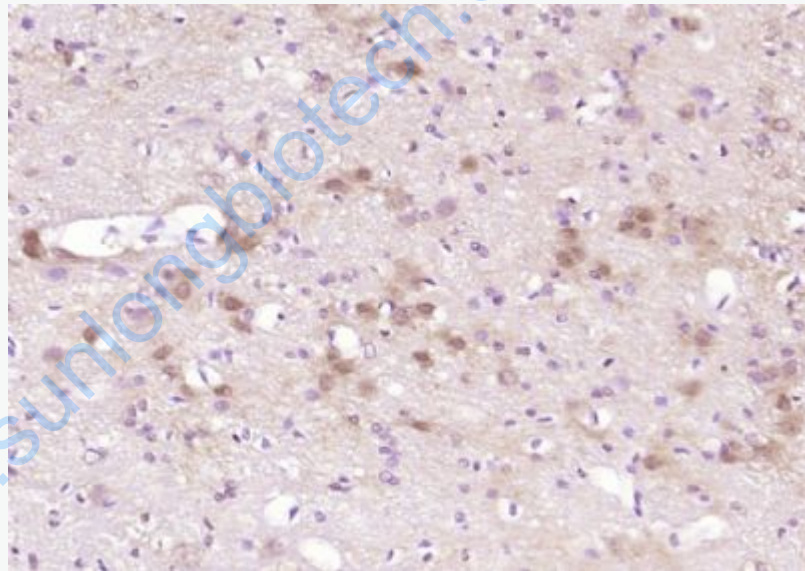
[SwissProt: Q15025](#)Human

[Unigene: 355141](#)Human

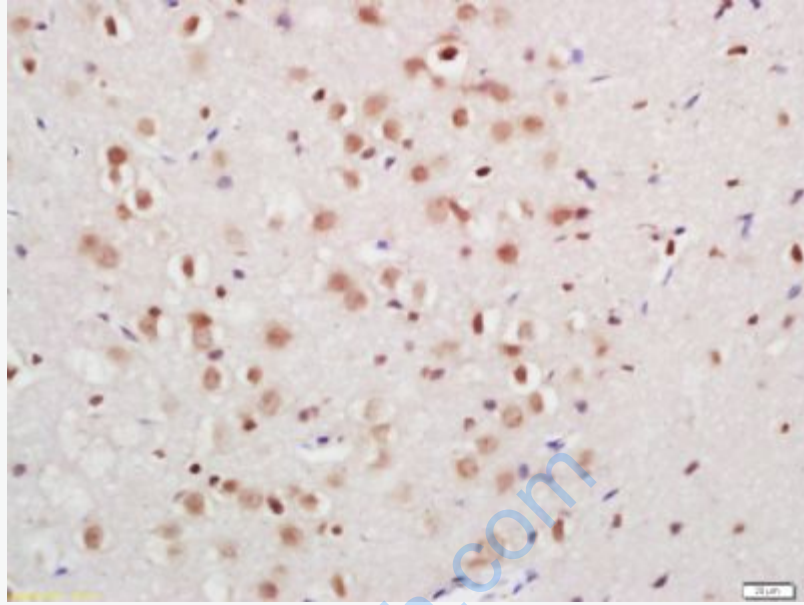
**Important Note:**

This product as supplied is intended for research use only, not for use in human, therapeutic or diagnostic applications.

**Picture:**



Paraformaldehyde-fixed, paraffin embedded (rat brain); Antigen retrieval by boiling in sodium citrate buffer (pH6.0) for 15min; Block endogenous peroxidase by 3% hydrogen peroxide for 20 minutes; Blocking buffer (normal goat serum) at 37°C for 30min; Antibody incubation with (TNIP1) Polyclonal Antibody, Unconjugated (SL9568R) at 1:200 overnight at 4°C, followed by operating according to SP Kit(Rabbit) (sp-0023) instructions and DAB staining.



Tissue/cell: rat brain tissue; 4% Paraformaldehyde-fixed and paraffin-embedded;  
Antigen retrieval: citrate buffer ( 0.01M, pH 6.0 ), Boiling bathing for 15min; Block endogenous peroxidase by 3% Hydrogen peroxide for 30min; Blocking buffer (normal goat serum,C-0005) at 37°C for 20 min;  
Incubation: Anti-TNIP1 Polyclonal Antibody, Unconjugated(SL9568R) 1:200, overnight at 4°C, followed by conjugation to the secondary antibody(SP-0023) and DAB(C-0010) staining