

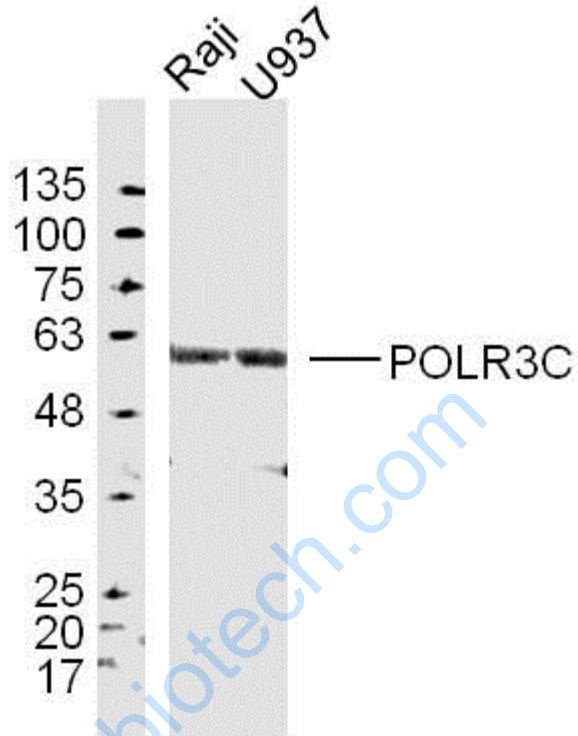


Rabbit Anti-POLR3C antibody

SL9569R

Product Name:	POLR3C
Chinese Name:	DNA指导的RNA聚合酶亚基C抗体
Alias:	POLR3C; DNA directed III 62 kDa polypeptide; DNA-directed RNA polymerase III subunit C; DNA-directed RNA polymerase III subunit rpc3; Polymerase (RNA) III (DNA directed) polypeptide C (62kD); RNA polymerase C subunit 3; RNA polymerase III 62 kDa subunit; RNA polymerase III C62 subunit; RNA polymerase III subunit C3; RPC3; RPC3 HUMAN.
Organism Species:	Rabbit
Clonality:	Polyclonal
React Species:	Human,
Applications:	WB=1:500-2000ELISA=1:500-1000IHC-P=1:400-800IHC-F=1:400-800ICC=1:100-500IF=1:100-500 (Paraffin sections need antigen repair) not yet tested in other applications. optimal dilutions/concentrations should be determined by the end user.
Molecular weight:	61kDa
Cellular localization:	The nucleus
Form:	Lyophilized or Liquid
Concentration:	1mg/ml
immunogen:	KLH conjugated synthetic peptide derived from human POLR3C:21-120/534
Lsotype:	IgG
Purification:	affinity purified by Protein A
Storage Buffer:	0.01M TBS(pH7.4) with 1% BSA, 0.03% Proclin300 and 50% Glycerol.
Storage:	Store at -20 °C for one year. Avoid repeated freeze/thaw cycles. The lyophilized antibody is stable at room temperature for at least one month and for greater than a year when kept at -20°C. When reconstituted in sterile pH 7.4 0.01M PBS or diluent of antibody the antibody is stable for at least two weeks at 2-4 °C.
PubMed:	PubMed
Product Detail:	

Picture:



Protein:

Raji(human) lysate at 40ug;

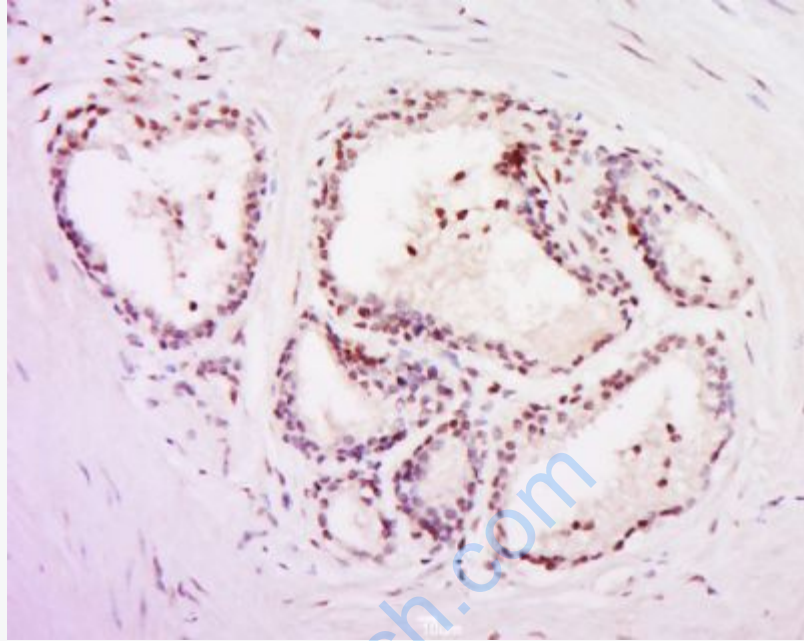
U937(human) lysate at 40ug;

Primary: rabbit Anti-POLR3C(SL9569R) at 1:300;

Secondary: IRDye800CW Goat Anti-Rabbit IgG at 1/20000 dilution

Predicted band size: 61 kD

Observed band size: 61 kD



Tissue/cell: human prostate tissue; 4% Paraformaldehyde-fixed and paraffin-embedded;

Antigen retrieval: citrate buffer (0.01M, pH 6.0), Boiling bathing for 15min; Block endogenous peroxidase by 3% Hydrogen peroxide for 30min; Blocking buffer (normal goat serum,C-0005) at 37°C for 20 min;

Incubation: Anti-POLR3C Polyclonal Antibody, Unconjugated(SL9569R) 1:500, overnight at 4°C, followed by conjugation to the secondary antibody(SP-0023) and DAB(C-0010) staining