



Rabbit Anti-Copine-6 antibody

SL9576R

Product Name:	Copine-6
Chinese Name:	神经网络蛋白CopineVI抗体
Alias:	Copine 6; Copine VI (neuronal); Copine VI; Copine-6; Copine6; CopineVI; CPNE 6; Cpne6; CPNE6_HUMAN; N copine; N-copine; Neuronal copine; Neuronal-copine.
Organism Species:	Rabbit
Clonality:	Polyclonal
React Species:	Human,Mouse,Rat,Pig,Horse,Rabbit,Sheep,
Applications:	ELISA=1:500-1000IHC-P=1:400-800IHC-F=1:400-800ICC=1:100-500IF=1:100-500 (Paraffin sections need antigen repair) not yet tested in other applications. optimal dilutions/concentrations should be determined by the end user.
Molecular weight:	62kDa
Cellular localization:	cytoplasmicThe cell membrane
Form:	Lyophilized or Liquid
Concentration:	1mg/ml
immunogen:	KLH conjugated synthetic peptide derived from human Copine-6:221-320/557
Lsotype:	IgG
Purification:	affinity purified by Protein A
Storage Buffer:	0.01M TBS(pH7.4) with 1% BSA, 0.03% Proclin300 and 50% Glycerol.
Storage:	Store at -20 °C for one year. Avoid repeated freeze/thaw cycles. The lyophilized antibody is stable at room temperature for at least one month and for greater than a year when kept at -20°C. When reconstituted in sterile pH 7.4 0.01M PBS or diluent of antibody the antibody is stable for at least two weeks at 2-4 °C.
PubMed:	PubMed
Product Detail:	Copine 6 is a 557 amino acid member of the copine family of evolutionarily conserved, soluble, calcium-dependent, membrane-binding proteins. Members of the copine family are involved in signal transduction and membrane trafficking. Arabidopsis thaliana mutants lacking copine proteins exhibit reduced cell number and smaller cell size, effects which may be due to a defect in vesicle fusion or transport. Copine 6 contains two N-terminal C2 domains and one C-terminal VWFA (von Willebrand factor A)

domain, which is also referred to as the A domain or the core domain. As is characteristic of the copine family, copine 6 functions in membrane trafficking and is capable of binding phospholipids in a calcium-dependent manner. Copine 6 may also play a role in synaptic plasticity.

Function:

May function in membrane trafficking. Exhibits calcium-dependent phospholipid binding properties. May have a role in synaptic plasticity.

Similarity:

Belongs to the copine family.

Contains 2 C2 domains.

Contains 1 VWFA domain.

SWISS:

O95741

Gene ID:

9362

Database links:

[Entrez Gene: 9362](#)Human

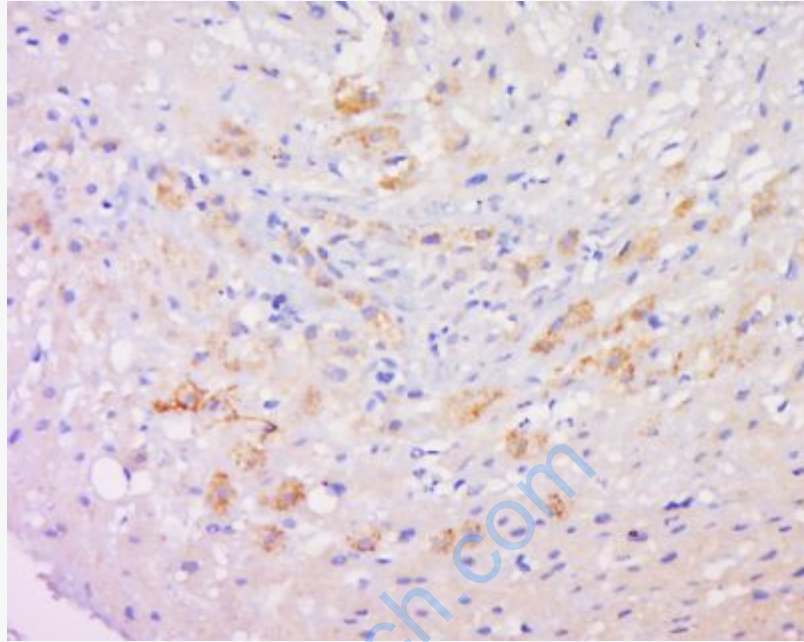
[Omim: 605688](#)Human

[SwissProt: O95741](#)Human

[Unigene: 6132](#)Human

Important Note:

This product as supplied is intended for research use only, not for use in human, therapeutic or diagnostic applications.



Picture:

Tissue/cell: human liver carcinoma; 4% Paraformaldehyde-fixed and paraffin-embedded;

Antigen retrieval: citrate buffer (0.01M, pH 6.0), Boiling bathing for 15min; Block endogenous peroxidase by 3% Hydrogen peroxide for 30min; Blocking buffer (normal goat serum,C-0005) at 37°C for 20 min;

Incubation: Anti-Copine-6 Polyclonal Antibody, Unconjugated(SL9576R) 1:500, overnight at 4°C, followed by conjugation to the secondary antibody(SP-0023) and DAB(C-0010) staining