



Rabbit Anti-PDE4B antibody

SL9590R

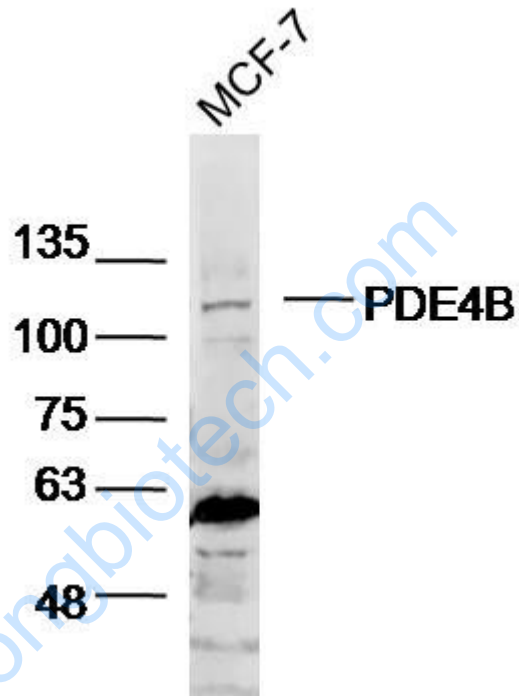
Product Name:	PDE4B
Chinese Name:	磷酸二酯酶4B抗体
Alias:	5''-cyclic phosphodiesterase 4B; cAMP-specific 3''; cAMP-specific 3',5'-cyclic phosphodiesterase 4B; cAMP-specific 3'5'-cyclic Phosphodiesterase 4B; cAMP-specific phosphodiesterase-4 B isoform; DKFZp686F2182; DPDE4; dunce-like phosphodiesterase E4; MGC126529; OTTHUMP00000010652; OTTHUMP00000010653; OTTHUMP00000010654; OTTHUMP00000010656; OTTHUMP00000232365; PDE 4B; PDE IVB; PDE32; Pde4b; PDE4B_HUMAN; PDE4B5; PDEIVB; Phosphodiesterase 4B; Phosphodiesterase 4B cAMP specific; Phosphodiesterase 4B, cAMP specific (phosphodiesterase E4 dunce homolog, Drosophila); Phosphodiesterase-4B cAMP-specific (dunce (Drosophila)-homolog); Phosphodiesterase-4B cAMP-specific.
Organism Species:	Rabbit
Clonality:	Polyclonal
React Species:	Human,Mouse,Rat,
Applications:	WB=1:500-2000ELISA=1:500-1000IHC-P=1:400-800IHC-F=1:400-800ICC=1:100-500IF=1:100-500 (Paraffin sections need antigen repair) not yet tested in other applications. optimal dilutions/concentrations should be determined by the end user.
Molecular weight:	107kDa
Cellular localization:	The nucleuscytoplasmic
Form:	Lyophilized or Liquid
Concentration:	1mg/ml
immunogen:	KLH conjugated synthetic peptide derived from human PDE4B:1-100/736
Lsotype:	IgG
Purification:	affinity purified by Protein A
Storage Buffer:	0.01M TBS(pH7.4) with 1% BSA, 0.03% Proclin300 and 50% Glycerol.
Storage:	Store at -20 °C for one year. Avoid repeated freeze/thaw cycles. The lyophilized antibody is stable at room temperature for at least one month and for greater than a year when kept at -20°C. When reconstituted in sterile pH 7.4 0.01M PBS or diluent of

	antibody the antibody is stable for at least two weeks at 2-4 °C.
PubMed:	PubMed
Product Detail:	<p>This gene is a member of the type IV, cyclic AMP (cAMP)-specific, cyclic nucleotide phosphodiesterase (PDE) family. The encoded protein regulates the cellular concentrations of cyclic nucleotides and thereby play a role in signal transduction. Altered activity of this protein has been associated with schizophrenia and bipolar affective disorder. Alternative splicing and the use of alternative promoters results in multiple transcript variants encoding different isoforms. [provided by RefSeq, Jul 2014]</p> <p>Function: Hydrolyzes the second messenger cAMP, which is a key regulator of many important physiological processes. May be involved in mediating central nervous system effects of therapeutic agents ranging from antidepressants to antiasthmatic and anti-inflammatory agents.</p> <p>Tissue Specificity: Expressed in brain, heart, lung and skeletal muscle.</p> <p>Similarity: Belongs to the cyclic nucleotide phosphodiesterase family. PDE4 subfamily.</p> <p>SWISS: Q07343</p> <p>Gene ID: 5142</p> <p>Database links:</p> <p>Entrez Gene: 5142 Human</p> <p>Entrez Gene: 18578 Mouse</p> <p>Entrez Gene: 24626 Rat</p> <p>Omicron: 600127 Human</p> <p>SwissProt: Q07343 Human</p> <p>SwissProt: P14646 Rat</p> <p>Unigene: 198072 Human</p> <p>Unigene: 20181 Mouse</p> <p>Unigene: 37733 Rat</p>

Important Note:

This product as supplied is intended for research use only, not for use in human, therapeutic or diagnostic applications.

Picture:



Sample: MCF-7 (Human) cell lysate at 40 ug

Primary: Anti-PDE4B(SL9590R) at 1/300 dilution

Secondary: IRDye800CW Goat Anti-Rabbit IgG at 1/20000 dilution

Predicted band size: 107kD

Observed band size: 107kD