



Rabbit Anti-RBM20 antibody

SL9606R

Product Name:	RBM20
Chinese Name:	RNABinding protein20抗体
Alias:	Probable RNA-binding protein 20; Rbm20; RBM20_HUMAN; RNA-binding motif protein 20.
Organism Species:	Rabbit
Clonality:	Polyclonal
React Species:	Human,Mouse,Rat,Dog,Cow,Horse,Sheep,
Applications:	WB=1:500-2000ELISA=1:500-1000IHC-P=1:400-800IHC-F=1:400-800Flow-Cyt=3ug/testICC=1:100-500IF=1:100-500 (Paraffin sections need antigen repair) not yet tested in other applications. optimal dilutions/concentrations should be determined by the end user.
Molecular weight:	134kDa
Cellular localization:	The nucleus
Form:	Lyophilized or Liquid
Concentration:	1mg/ml
immunogen:	KLH conjugated synthetic peptide derived from human RBM20:361-460/1227
Lsotype:	IgG
Purification:	affinity purified by Protein A
Storage Buffer:	0.01M TBS(pH7.4) with 1% BSA, 0.03% Proclin300 and 50% Glycerol.
Storage:	Store at -20 °C for one year. Avoid repeated freeze/thaw cycles. The lyophilized antibody is stable at room temperature for at least one month and for greater than a year when kept at -20°C. When reconstituted in sterile pH 7.4 0.01M PBS or diluent of antibody the antibody is stable for at least two weeks at 2-4 °C.
PubMed:	PubMed
Product Detail:	<p>This gene encodes a protein that likely binds RNA. Mutations in this gene have been associated with familial dilated cardiomyopathy. [provided by RefSeq, Mar 2010]</p> <p>Function: RNA-binding protein that acts as a regulator of mRNA splicing of a subset of genes involved in cardiac development. Regulates splicing of TTN (Titin).</p>

Subcellular Location:
Nucleus (By similarity).

Tissue Specificity:
Expressed in the heart.

DISEASE:
Defects in RBM20 are the cause of cardiomyopathy dilated type 1DD (CMD1DD) [MIM:613172]. A disorder characterized by ventricular dilation and impaired systolic function, resulting in congestive heart failure and arrhythmia. Patients are at risk of premature death.

Similarity:
Contains 1 RRM (RNA recognition motif) domain.

SWISS:
Q5T481

Gene ID:
282996

Database links:

[Entrez Gene: 282996](#)Human

[Entrez Gene: 73713](#)Mouse

[Entrez Gene: 309544](#)Rat

[Omim: 613171](#)Human

[SwissProt: Q5T481](#)Human

[SwissProt: Q3UQS8](#)Mouse

[Unigene: 92105](#)Cow

[Unigene: 116630](#)Human

[Unigene: 726550](#)Human

[Unigene: 485879](#)Mouse

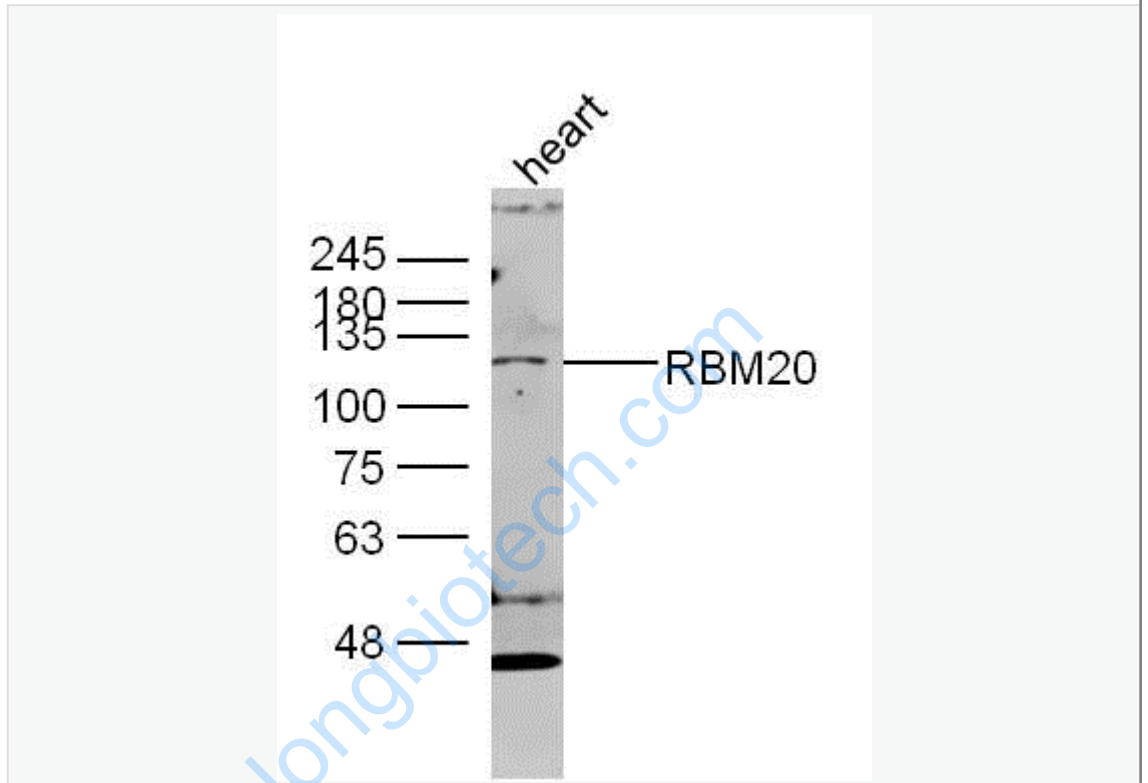
[Unigene: 21596](#)Rat

Important Note:

This product as supplied is intended for research use only, not for use in human, therapeutic or diagnostic applications.

Involvement in disease; Defects in RBM20 are the cause of cardiomyopathy dilated type 1DD (CMD1DD). A disorder characterized by ventricular dilation and impaired systolic function, resulting in congestive heart failure and arrhythmia. Patients are at risk of premature death.

Picture:



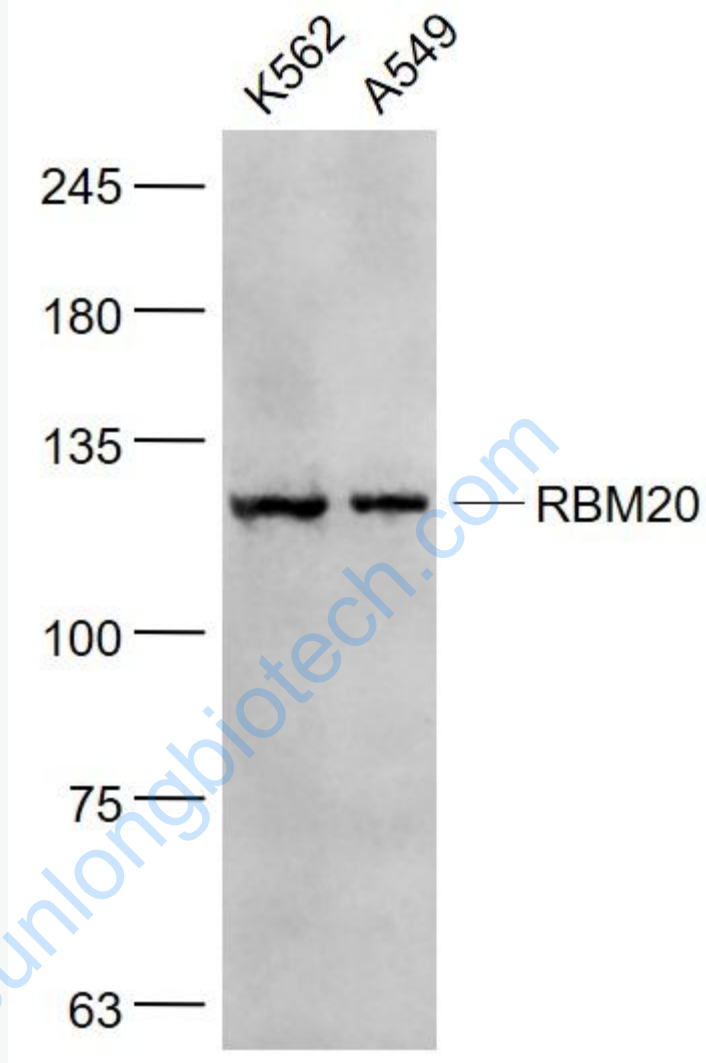
Sample: heart (mouse) Lysate at 40 ug

Primary: Anti- RBM20 (SL9606R) at 1/300 dilution

Secondary: IRDye800CW Goat Anti-Rabbit IgG at 1/20000 dilution

Predicted band size: 75kD

Observed band size: 75 kD



Sample:

K562(Human) Cell Lysate at 30 ug

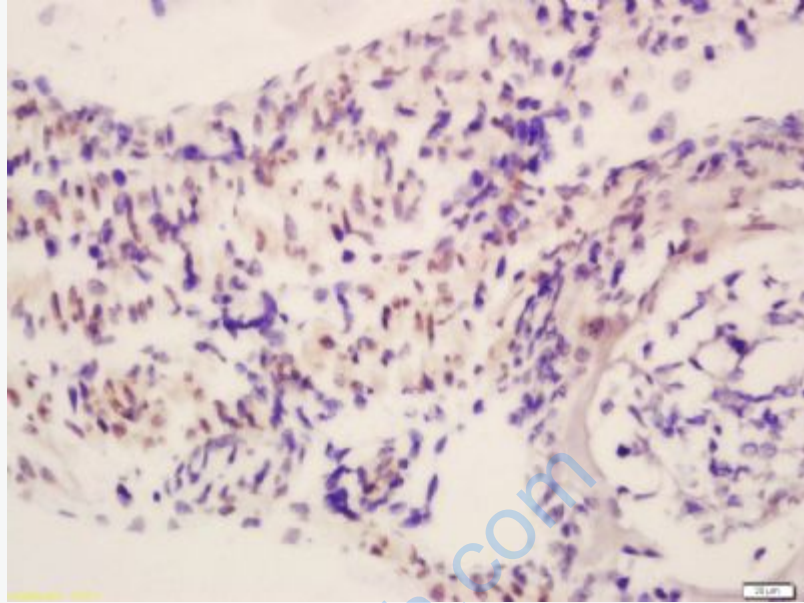
A549(Human) Cell Lysate at 30 ug

Primary: Anti- RBM20 (SL9606R) at 1/1000 dilution

Secondary: IRDye800CW Goat Anti-Rabbit IgG at 1/20000 dilution

Predicted band size: 134 kD

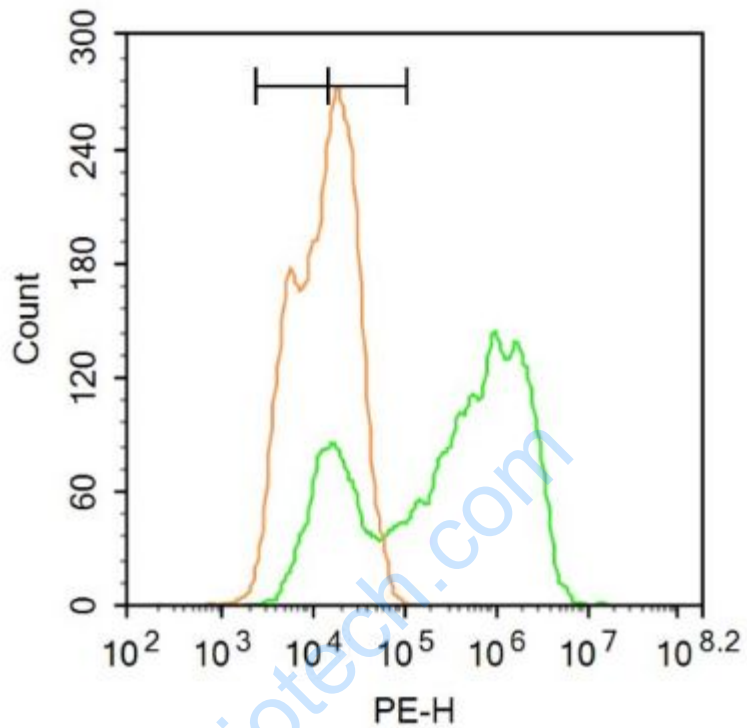
Observed band size: 130 kD



Tissue/cell: mouse embryo tissue; 4% Paraformaldehyde-fixed and paraffin-embedded;

Antigen retrieval: citrate buffer (0.01M, pH 6.0), Boiling bathing for 15min; Block endogenous peroxidase by 3% Hydrogen peroxide for 30min; Blocking buffer (normal goat serum,C-0005) at 37°C for 20 min;

Incubation: Anti-RBM20 Polyclonal Antibody, Unconjugated(SL9606R) 1:200, overnight at 4°C, followed by conjugation to the secondary antibody(SP-0023) and DAB(C-0010) staining



Blank control:A549.

Primary Antibody (green line): Rabbit Anti-RBM20 antibody (SL9606R)

Dilution: $1\mu\text{g} / 10^6$ cells;

Isotype Control Antibody (orange line): Rabbit IgG .

Secondary Antibody : Goat anti-rabbit IgG-PE

Dilution: $3\mu\text{g} / \text{test}$.

Protocol

The cells were fixed with 4% PFA (10min at room temperature)and then permeabilized with 90% ice-cold methanol for 20 min at -20°C . The cells were then incubated in 5% BSA to block non-specific protein-protein interactions for 30 min at room temperature .Cells stained with Primary Antibody for 30 min at room temperature. The secondary antibody used for 40 min at room temperature.

	Acquisition of 20,000 events was performed.
--	---

www.sunlongbiotech.com