



Rabbit Anti-MYH9 antibody

SL9610R

Product Name:	MYH9
Chinese Name:	肌球蛋白重链9抗体
Alias:	non-muscle Myosin IIA; Myosin heavy polypeptide 9 non muscle; Myosin-9; Myosin9; Myosin 9; Alternative namesnon-muscle Iia; type A; Cellular myosin heavy chain; Cellular myosin heavy chain type A; DFNA 17; DFNA17; EPSTS; FTNS; MHA; MYH 2A; MYH 9; MYH9; MYH9_HUMAN; MYHas8; MYHas8; MyHC 2A; MyHC-Iia; MyHC-Iia; MYHSA 2; MYHSA2; MYHSA2; Myosin 9; Myosin heavy chain 9; Myosin heavy chain 9 non muscle; Myosin heavy chain; Myosin heavy chain non muscle Iia; Myosin heavy chain nonmuscle Iia; myosin heavy polypeptide 2; NMHC II A; NMMHC A;NMMHC II a; NMMHC II-a; NMMHC IIA; NMMHC-A; NMMHC-IIA; NMMHCA; Non muscle myosin heavy chain A; Non muscle myosin heavy chain;Non muscle myosin heavy chain II A; Non muscle myosin heavy polypeptide 9; Non-muscle myosin heavy chain A; Non-muscle myosin heavy chain Iia; Nonmuscle myosin heavy chain A.
Organism Species:	Rabbit
Clonality:	Polyclonal
React Species:	Human,Mouse,Rat,Pig,Cow,
Applications:	WB=1:500-2000ELISA=1:500-1000 not yet tested in other applications. optimal dilutions/concentrations should be determined by the end user.
Molecular weight:	226kDa
Cellular localization:	cytoplasmic
Form:	Lyophilized or Liquid
Concentration:	1mg/ml
immunogen:	KLH conjugated synthetic peptide derived from human MYH9:151-250/1960
Lsotype:	IgG
Purification:	affinity purified by Protein A
Storage Buffer:	0.01M TBS(pH7.4) with 1% BSA, 0.03% Proclin300 and 50% Glycerol.
Storage:	Store at -20 °C for one year. Avoid repeated freeze/thaw cycles. The lyophilized antibody is stable at room temperature for at least one month and for greater than a year

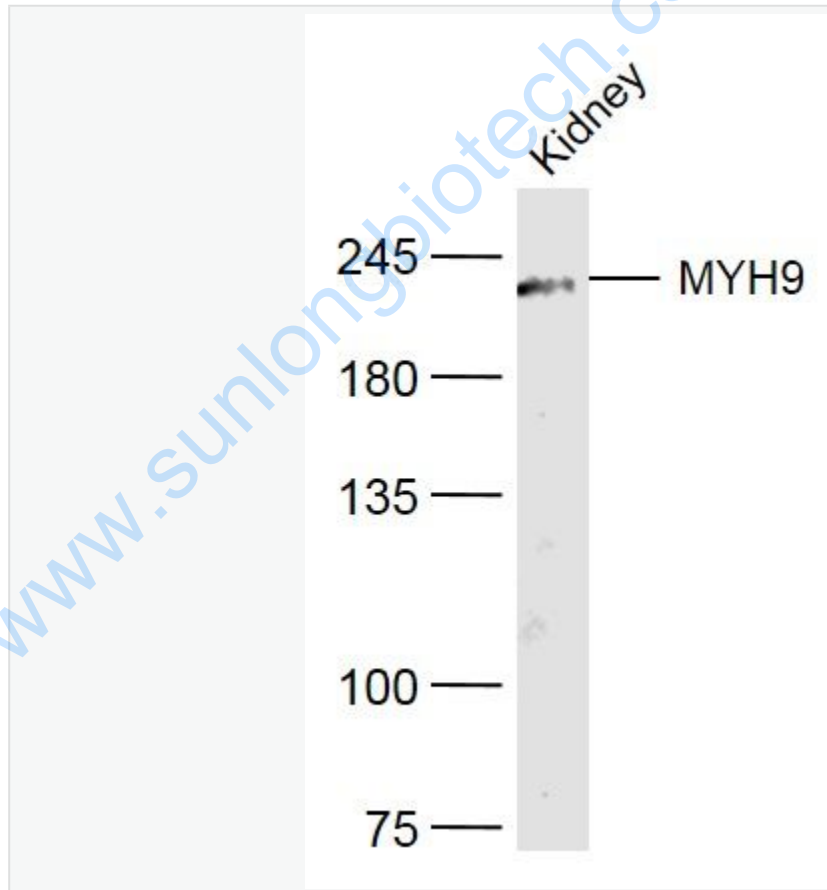
	when kept at -20°C. When reconstituted in sterile pH 7.4 0.01M PBS or diluent of antibody the antibody is stable for at least two weeks at 2-4 °C.
PubMed:	PubMed
Product Detail:	<p>Cellular myosin that appears to play a role in cytokinesis, cell shape, and specialized functions such as secretion and capping. Defects in MYH9 are the cause of May-Hegglin anomaly (MHA) . MHA is an autosomal dominant macrothrombocytopenia characterized by thrombocytopenia, giant platelets and leukocyte inclusions appearing as highly parallel paracrystalline bodies.</p> <p>Function: Cellular myosin that appears to play a role in cytokinesis, cell shape, and specialized functions such as secretion and capping.</p> <p>Subunit: Interacts with PDLIM2. Interacts with SLC6A4. Myosin is a hexameric protein that consists of 2 heavy chain subunits (MHC), 2 alkali light chain subunits (MLC) and 2 regulatory light chain subunits (MLC-2). Interacts with RASIP1. Interacts with DDR1. Interacts with SVIL and HTRA3.</p> <p>Subcellular Location: Cytoplasm, cytoskeleton. Cytoplasm, cell cortex.</p> <p>Tissue Specificity: In the kidney, expressed in the glomeruli. Also expressed in leukocytes.</p> <p>Post-translational modifications: ISGylated.</p> <p>Similarity: Contains 1 IQ domain. Contains 1 myosin head-like domain.</p> <p>SWISS: P35579</p> <p>Gene ID: 4627</p> <p>Database links: Entrez Gene: 4627Human Entrez Gene: 17886Mouse Entrez Gene: 25745Rat Omim: 160775Human</p>

[SwissProt: P35579](#)Human
[SwissProt: Q8VDD5](#)Mouse
[SwissProt: Q62812](#)Rat
[Unigene: 474751](#)Human
[Unigene: 29677](#)Mouse
[Unigene: 11385](#)Rat

Important Note:

This product as supplied is intended for research use only, not for use in human, therapeutic or diagnostic applications.

Picture:



Sample:

Kidney (Mouse) Lysate at 40 ug

Primary: Anti-MYH9 (SL9610R) at 1/300 dilution

Secondary: IRDye800CW Goat Anti-Rabbit IgG at 1/20000 dilution

Predicted band size: 226 kD

Observed band size: 226 kD

www.sunlongbiotech.com