



Rabbit Anti-C14ORF140 antibody

SL9614R

Product Name:	C14ORF140
Chinese Name:	14号染色体开放阅读框140抗体
Alias:	chromosome 14 open reading frame 140; FAM164C; family with sequence similarity 164 member C; FLJ23093; UPF0418 protein FAM164C; ZC21C_HUMAN.
Organism Species:	Rabbit
Clonality:	Polyclonal
React Species:	Human,Mouse,Rat,Dog,Pig,Cow,Horse,Rabbit,Sheep,
Applications:	WB=1:500-2000ELISA=1:500-1000IHC-P=1:400-800IHC-F=1:400-800ICC=1:100-500IF=1:100-500 (Paraffin sections need antigen repair) not yet tested in other applications. optimal dilutions/concentrations should be determined by the end user.
Molecular weight:	52kDa
Cellular localization:	The nucleuscytoplasmicExtracellular matrixSecretory protein
Form:	Lyophilized or Liquid
Concentration:	1mg/ml
immunogen:	KLH conjugated synthetic peptide derived from human C14ORF140/FAM164C:871-456/456
Lsotype:	IgG
Purification:	affinity purified by Protein A
Storage Buffer:	0.01M TBS(pH7.4) with 1% BSA, 0.03% Proclin300 and 50% Glycerol.
Storage:	Store at -20°C for one year. Avoid repeated freeze/thaw cycles. The lyophilized antibody is stable at room temperature for at least one month and for greater than a year when kept at -20°C. When reconstituted in sterile pH 7.4 0.01M PBS or diluent of antibody the antibody is stable for at least two weeks at 2-4°C.
PubMed:	PubMed
Product Detail:	Chromosome 14 contains about 700 genes and 106 million base pairs and makes up about 3.5% of human cellular DNA. Chromosome 14 encodes the presenilin 1 (PSEN1) gene, which is one of the three key genes associated with the development of Alzheimer's disease. The SERPINA1 gene is located on chromosome 14 and when defective leads to the genetic disorder α -antitrypsin deficiency. This disorder is

characterized by severe lung complications and liver dysfunction. Notably, the immunoglobulin heavy chain locus is found on chromosome 14 and has been identified as a fusion with the chromosome 19 encoded protein BCL3 in the (14;19) translocations found in a variety of B cell malignancies. The C14orf140 gene product has been provisionally designated C14orf140 pending further characterization.

Similarity:

Belongs to the ZC2HC1 family.
Contains 1 C2HC-type zinc finger.

SWISS:

Q53FD0

Gene ID:

79696

Database links:

[Entrez Gene: 79696](#)Human

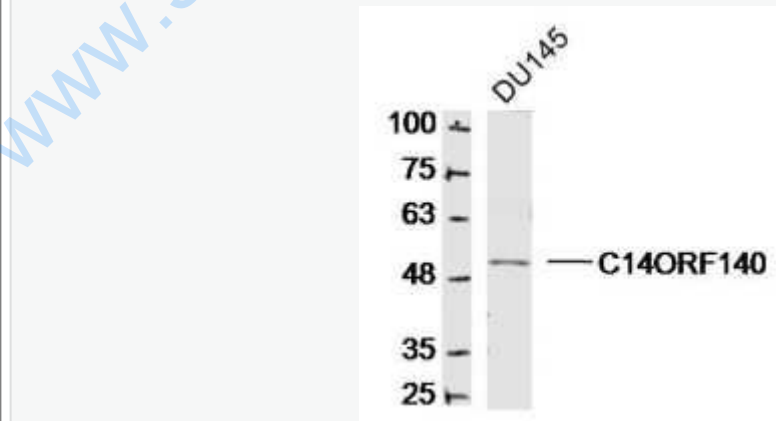
[SwissProt: Q53FD0](#)Human

[Unigene: 48642](#)Human

Important Note:

This product as supplied is intended for research use only, not for use in human, therapeutic or diagnostic applications.

Picture:



Sample:

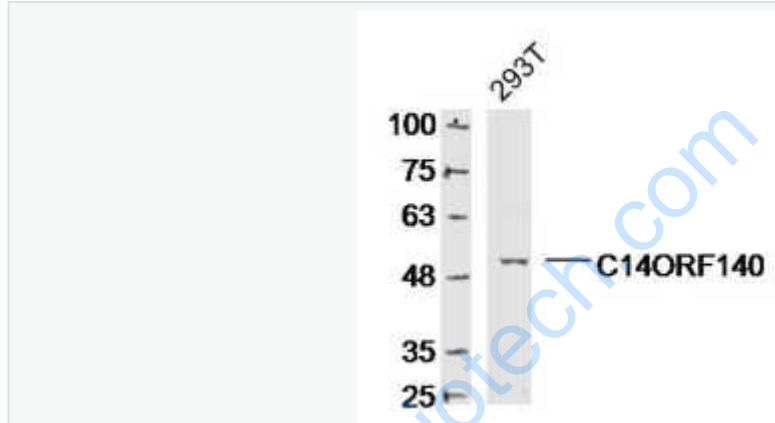
DU145 Cell(Human)Lysate at 30 ug

Primary: Anti- C14ORF140 (SL9614R)at 1/300 dilution

Secondary: IRDye800CW Goat Anti-Rabbit IgG at 1/20000 dilution

Predicted band size: 52kD

Observed band size: 52kD



Sample:

293T Cell (Human) Lysate at 30 ug

Primary: Anti- C14ORF140 (SL9614R)at 1/300 dilution

Secondary: IRDye800CW Goat Anti-Rabbit IgG at 1/20000 dilution

Predicted band size: 52kD

Observed band size: 52kD