



Rabbit Anti-C14orf174 antibody

SL9617R

Product Name:	C14orf174
Chinese Name:	14号染色体开放阅读框174
Alias:	chromosome 14 open reading frame 174; FAM15A; SAM domain-containing protein 15; SAM15_HUMAN; SAMD15; Sterile alpha motif domain-containing protein 15.
Organism Species:	Rabbit
Clonality:	Polyclonal
React Species:	Human,Mouse,Rat,Dog,Cow,Rabbit,Sheep,
Applications:	ELISA=1:500-1000IHC-P=1:400-800IHC-F=1:400-800ICC=1:100-500IF=1:100-500 (Paraffin sections need antigen repair) not yet tested in other applications. optimal dilutions/concentrations should be determined by the end user.
Molecular weight:	77kDa
Cellular localization:	The nucleuscytoplasmic
Form:	Lyophilized or Liquid
Concentration:	1mg/ml
immunogen:	KLH conjugated synthetic peptide derived from human SAMD15/C14orf174:571-674/674
Lsotype:	IgG
Purification:	affinity purified by Protein A
Storage Buffer:	0.01M TBS(pH7.4) with 1% BSA, 0.03% Proclin300 and 50% Glycerol.
Storage:	Store at -20 癆 for one year. Avoid repeated freeze/thaw cycles. The lyophilized antibody is stable at room temperature for at least one month and for greater than a year when kept at -20癆. When reconstituted in sterile pH 7.4 0.01M PBS or diluent of antibody the antibody is stable for at least two weeks at 2-4 癆.
PubMed:	PubMed
Product Detail:	C14orf174, is a 674 amino acid protein that contains one SAM (sterile alpha motif) domain. Existing as two alternatively spliced isoforms,C14orf174 is encoded by a gene that maps to human chromosome 14q24.3. Chromosome 14 contains about 700 genes and 106 million base pairs and makes up about 3.5% of human cellular DNA.

Chromosome 14 encodes the presenilin 1 (PSEN1) gene, which is one of the three key genes associated with the development of Alzheimer's disease. The SERPINA1 gene is located on chromosome 14 and when defective leads to the genetic disorder α -antitrypsin deficiency. This disorder is characterized by severe lung complications and liver dysfunction. Notably, the immunoglobulin heavy chain locus is found on chromosome 14 and has been identified as a fusion with the chromosome 19 encoded protein Bcl-3 in the (14;19) translocations found in a variety of B cell malignancies.

Similarity:

Contains 1 SAM (sterile alpha motif) domain.

SWISS:

Q9P1V8

Gene ID:

161394

Database links:

[Entrez Gene: 161394](#)Human

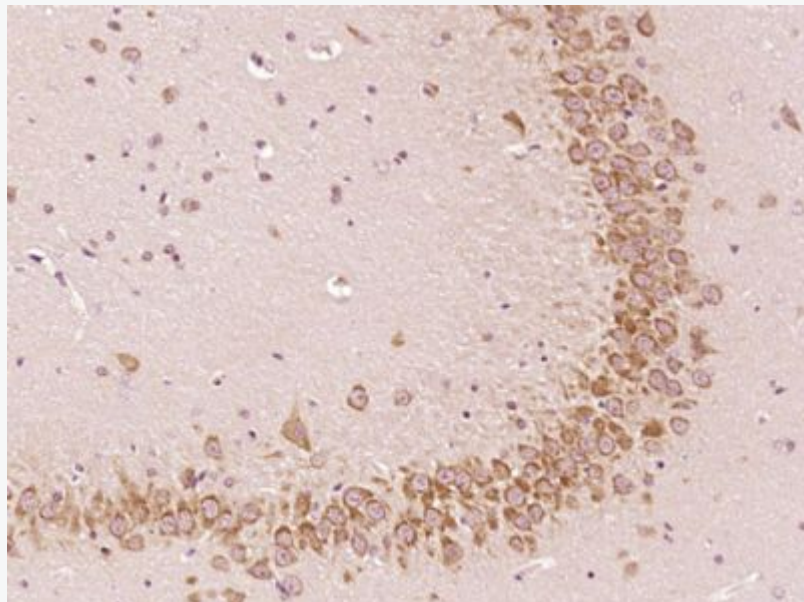
[SwissProt: Q9P1V8](#)Human

[Unigene: 421961](#)Human

Important Note:

This product as supplied is intended for research use only, not for use in human, therapeutic or diagnostic applications.

Picture:



Paraformaldehyde-fixed, paraffin embedded (Rat brain); Antigen retrieval by boiling in sodium citrate buffer (pH6.0) for 15min; Block endogenous peroxidase by 3% hydrogen peroxide for 20 minutes; Blocking buffer (normal goat serum) at 37°C for 30min; Antibody incubation with (C14orf174) Polyclonal Antibody, Unconjugated (SL9617R) at 1:400 overnight at 4°C, followed by operating according to SP Kit(Rabbit) (sp-0023) instructions and DAB staining.

www.sunlongbiotech.com