



## Rabbit Anti-NPAP1 antibody

SL9625R

<b>Product Name:</b>	NPAP1
<b>Chinese Name:</b>	核孔蛋白1抗体
<b>Alias:</b>	NPAP1; NPAP 1; NPAP-1; Nuclear pore associated protein 1; C15orf2; NPAP1 HUMAN.
<b>Organism Species:</b>	Rabbit
<b>Clonality:</b>	Polyclonal
<b>React Species:</b>	Human,
<b>Applications:</b>	WB=1:500-2000ELISA=1:500-1000IHC-P=1:400-800IHC-F=1:400-800ICC=1:100-500IF=1:100-500 (Paraffin sections need antigen repair) not yet tested in other applications. optimal dilutions/concentrations should be determined by the end user.
<b>Molecular weight:</b>	121kDa
<b>Cellular localization:</b>	The nucleusThe cell membrane
<b>Form:</b>	Lyophilized or Liquid
<b>Concentration:</b>	1mg/ml
<b>immunogen:</b>	KLH conjugated synthetic peptide derived from human NPAP1:801-900/1156
<b>Lsotype:</b>	IgG
<b>Purification:</b>	affinity purified by Protein A
<b>Storage Buffer:</b>	0.01M TBS(pH7.4) with 1% BSA, 0.03% Proclin300 and 50% Glycerol.
<b>Storage:</b>	Store at -20 °C for one year. Avoid repeated freeze/thaw cycles. The lyophilized antibody is stable at room temperature for at least one month and for greater than a year when kept at -20°C. When reconstituted in sterile pH 7.4 0.01M PBS or diluent of antibody the antibody is stable for at least two weeks at 2-4 °C.
<b>PubMed:</b>	<a href="#">PubMed</a>
<b>Product Detail:</b>	This gene is located in the Prader-Willi syndrome region on chromosome 15. This gene is biallelically expressed in adult testis and brain but is paternally imprinted in fetal brain. Defects in this gene may be associated with Prader-Willi syndrome. [provided by RefSeq, Aug 2012]  <b>Function:</b>

May be involved in spermatogenesis.

**Subunit:**

Associates with the nuclear pore complex (NPC).

**Subcellular Location:**

Nucleus, nucleoplasm. Nucleus inner membrane. Note=Colocalizes with the NPC and nuclear lamins at the nuclear periphery.

**Tissue Specificity:**

Testis-specific in adults. In fetal brain expressed only from the paternal allele.

**SWISS:**

Q9NZP6

**Gene ID:**

23742

**Database links:**

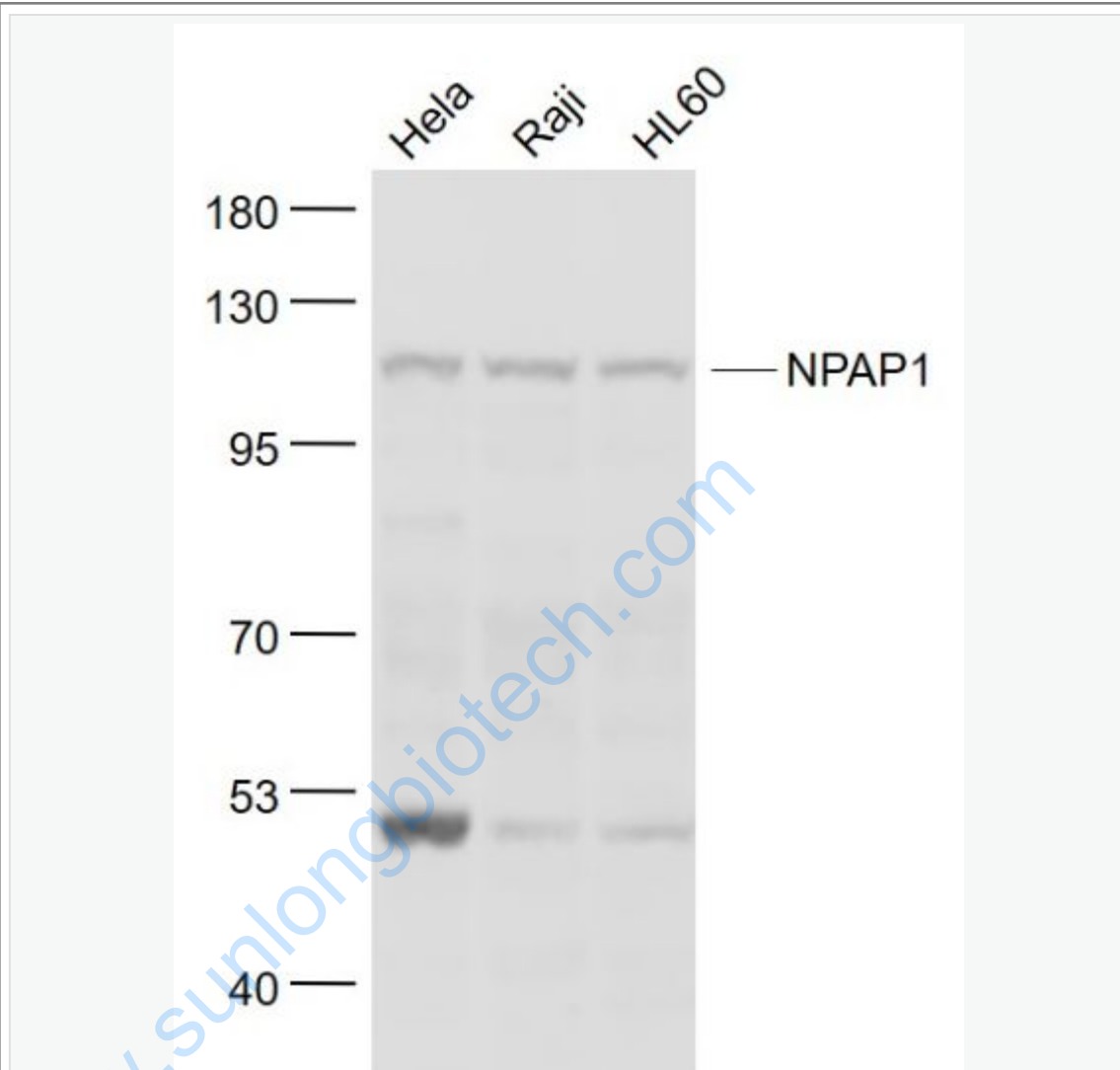
[Entrez Gene: 23742](#) Human

**Important Note:**

This product as supplied is intended for research use only, not for use in human, therapeutic or diagnostic applications.

www.sunlongbiotech.com

Picture:



Sample:

HeLa (Human) Cell Lysate at 30 ug

Raji(Human) Cell Lysate at 30 ug

HL60(Human) Cell Lysate at 30 ug

Primary: Anti- NPAP1 (SL9625R) at 1/1000 dilution

Secondary: IRDye800CW Goat Anti-Rabbit IgG at 1/20000 dilution

Predicted band size: 121 kD

	Observed band size: 121 kD
--	----------------------------

[www.sunlongbiotech.com](http://www.sunlongbiotech.com)