



Rabbit Anti-KLHL36 antibody

SL9628R

Product Name:	KLHL36
Chinese Name:	Kelch样蛋白36抗体
Alias:	Kelch like 36; Kelch like protein 36; kelch-like 36 (Drosophila); Kelch-like protein 36; KLH36_HUMAN; KLHL 36; KLHL-36.
Organism Species:	Rabbit
Clonality:	Polyclonal
React Species:	Human,Mouse,Rat,Dog,Cow,Horse,Sheep,
Applications:	WB=1:500-2000ELISA=1:500-1000IHC-P=1:400-800IHC-F=1:400-800ICC=1:100-500IF=1:100-500 (Paraffin sections need antigen repair) not yet tested in other applications. optimal dilutions/concentrations should be determined by the end user.
Molecular weight:	70kDa
Cellular localization:	The nucleuscytoplasmic
Form:	Lyophilized or Liquid
Concentration:	1mg/ml
immunogen:	KLH conjugated synthetic peptide derived from human KLHL36/C16orf44:51-150/616
Lsotype:	IgG
Purification:	affinity purified by Protein A
Storage Buffer:	0.01M TBS(pH7.4) with 1% BSA, 0.03% Proclin300 and 50% Glycerol.
Storage:	Store at -20 °C for one year. Avoid repeated freeze/thaw cycles. The lyophilized antibody is stable at room temperature for at least one month and for greater than a year when kept at -20°C. When reconstituted in sterile pH 7.4 0.01M PBS or diluent of antibody the antibody is stable for at least two weeks at 2-4 °C.
PubMed:	PubMed
Product Detail:	C16orf44 is a 616 amino acid protein that contains six Kelch repeats, one BTB/POZ domain and one BTB/Kelch associated (BACK) domain. C16orf44 is believed to play a role in protein ubiquitination and may function as a substrate-specific adapter of an E3 ubiquitin-protein ligase complex. E3 ligases accept a ubiquitin residue from an E2 ubiquitin-conjugating enzyme and immediately transfer that residue to a protein that is targeted for degradation. Specifically, C16orf44 interacts with CUL-3, a member of the

cullin family of mediators that participate in the selective targeting of proteins for ubiquitin-mediated proteolysis. Due to alternative splicing events, two isoforms of C16orf44 are expressed.

Function:

Probable substrate-specific adapter of an E3 ubiquitin-protein ligase complex which mediates the ubiquitination and subsequent proteasomal degradation of target proteins.

Subunit:

Interacts with CUL3.

Similarity:

Contains 1 BACK (BTB/Kelch associated) domain.

Contains 1 BTB (POZ) domain.

Contains 6 Kelch repeats.

SWISS:

Q8N4N3

Gene ID:

79786

Database links:

[Entrez Gene: 79786](#)Human

[Entrez Gene: 234796](#)Mouse

[Entrez Gene: 498957](#)Rat

[SwissProt: Q8N4N3](#)Human

[SwissProt: Q8R124](#)Mouse

[SwissProt: Q66HD2](#)Rat

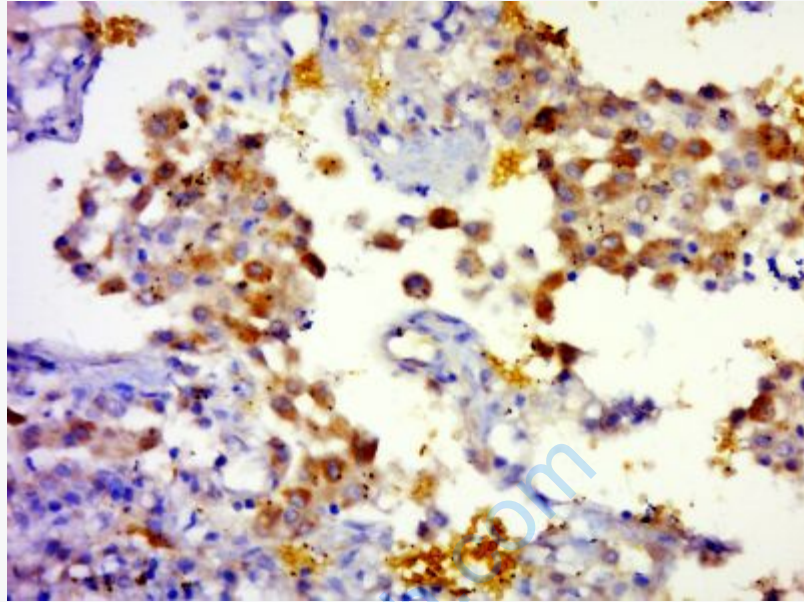
[Unigene: 578546](#)Human

[Unigene: 86446](#)Mouse

[Unigene: 139361](#)Rat

Important Note:

This product as supplied is intended for research use only, not for use in human, therapeutic or diagnostic applications.



Picture:

Paraformaldehyde-fixed, paraffin embedded (human lung cancer); Antigen retrieval by boiling in sodium citrate buffer (pH6.0) for 15min; Block endogenous peroxidase by 3% hydrogen peroxide for 20 minutes; Blocking buffer (normal goat serum) at 37°C for 30min; Antibody incubation with (KLHL) Polyclonal Antibody, Unconjugated (SL9628R) at 1:400 overnight at 4°C, followed by a conjugated secondary (sp-0023) for 20 minutes and DAB staining.