



## Rabbit Anti-INTS3 antibody

SL9766R

<b>Product Name:</b>	INTS3
<b>Chinese Name:</b>	集成复杂蛋白亚单位3抗体
<b>Alias:</b>	Integrator complex subunit 3; C1orf193; C1orf60; FLJ21919; INT 3; INT3; INTS3; SOSS complex subunit A.
<b>Organism Species:</b>	Rabbit
<b>Clonality:</b>	Polyclonal
<b>React Species:</b>	Human,Dog,Pig,Cow,Horse,Rabbit,
<b>Applications:</b>	WB=1:500-2000ELISA=1:500-1000IHC-P=1:400-800IHC-F=1:400-800IF=1:50-200 (Paraffin sections need antigen repair) not yet tested in other applications. optimal dilutions/concentrations should be determined by the end user.
<b>Molecular weight:</b>	118kDa
<b>Cellular localization:</b>	The nucleus
<b>Form:</b>	Lyophilized or Liquid
<b>Concentration:</b>	1mg/ml
<b>immunogen:</b>	KLH conjugated synthetic peptide derived from human INTS3:901-1043/1043
<b>Lsotype:</b>	IgG
<b>Purification:</b>	affinity purified by Protein A
<b>Storage Buffer:</b>	0.01M TBS(pH7.4) with 1% BSA, 0.03% Proclin300 and 50% Glycerol.
<b>Storage:</b>	Store at -20 °C for one year. Avoid repeated freeze/thaw cycles. The lyophilized antibody is stable at room temperature for at least one month and for greater than a year when kept at -20°C. When reconstituted in sterile pH 7.4 0.01M PBS or diluent of antibody the antibody is stable for at least two weeks at 2-4 °C.
<b>PubMed:</b>	<a href="#">PubMed</a>
<b>Product Detail:</b>	RNA polymerase II (Pol II) is an enzyme that is composed of twelve subunits and is responsible for the transcription of protein-coding genes. Transcription initiation requires Pol II-mediated recruitment of transcription machinery to a target promoter, thereby allowing transcription to begin. The integrator complex is a multi-protein complex that associates with the C-terminal domain of Pol II and is involved in small nuclear RNA (snRNA) transcription and 3'-end processing. INTS3 (integrator complex

subunit 3), also known as INT3 or SOSS-A, is a 1,043 amino acid nuclear protein and is a subunit of the Integrator complex, which associates with the C-terminal domain of RNA polymerase II large subunit and mediates 3-prime end processing of small nuclear RNAs U1 and U2. Expressed in the nucleus, INTS3 exists as four alternatively spliced isoforms and is encoded by a gene located on human chromosome 1q21.3.

**Subunit:**

Belongs to the multiprotein complex Integrator, at least composed of INTS1, INTS2, INTS3, INTS4, INTS5, INTS6, INTS7, INTS8, INTS9/RC74, INTS10, CPSF3L/INTS11 and INTS12. Component of the SOSS complex, composed of SOSS-B (SOSS-B1/OBFC2B or SOSS-B2/OBFC2A), SOSS-A/INTS3 and SOSS-C/C9orf80. SOSS complexes containing SOSS-B1/OBFC2B are more abundant than complexes containing SOSS-B2/OBFC2A. Interacts with SOSS-B1/OBFC2B, SOSS-B2/OBFC2A and SOSS-C/C9orf80; the interaction is direct. Interacts with NBN/NBS1.

**Subcellular Location:**

Nucleus. Note=Localizes to nuclear foci following DNA damage.

**Similarity:**

Belongs to the Integrator subunit 3 family.

**SWISS:**

Q68E01

**Gene ID:**

65123

**Database links:**

[Entrez Gene: 65123](#)Human

[Entrez Gene: 229543](#)Mouse

[Oimim: 611347](#)Human

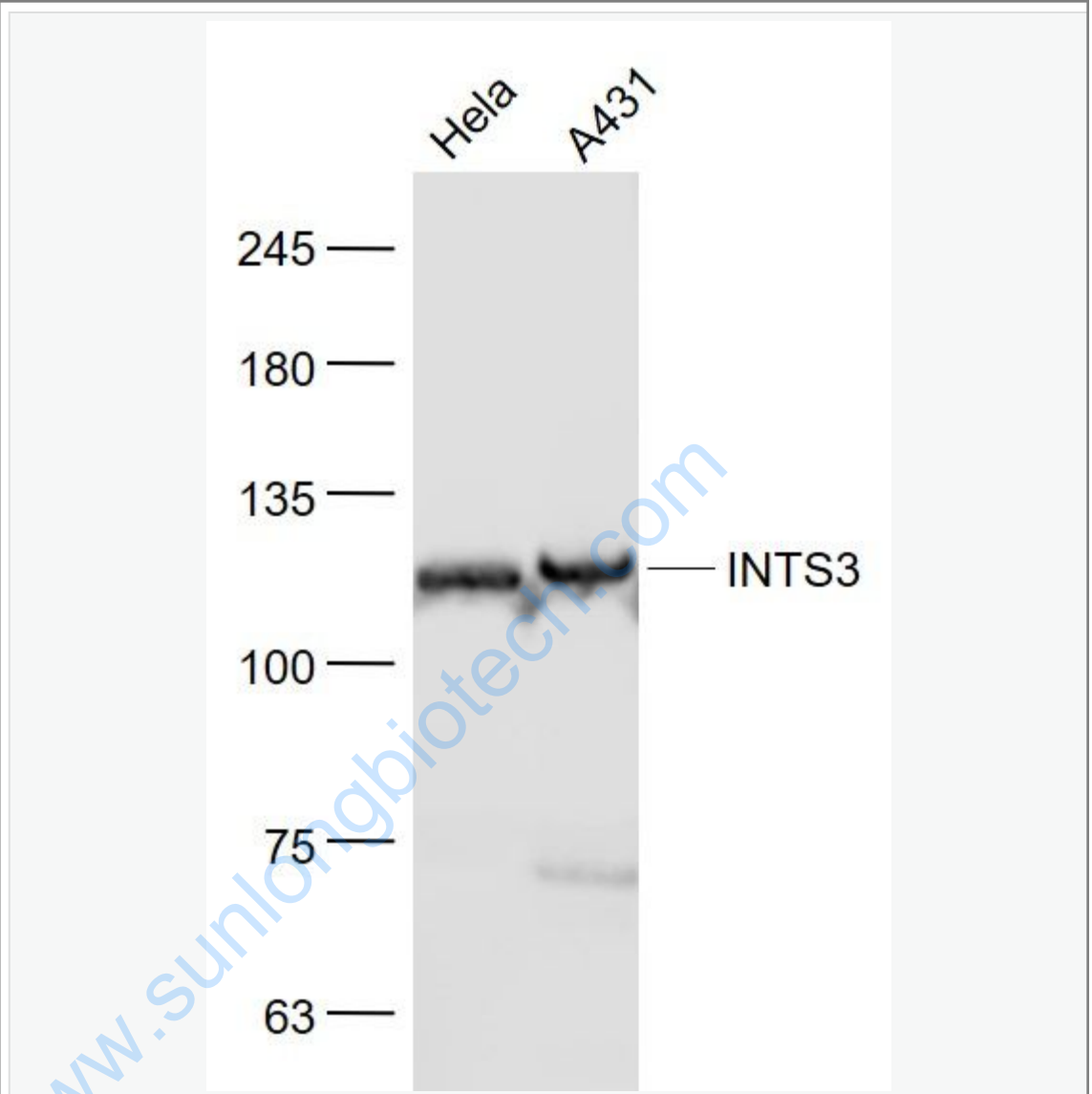
[SwissProt: Q68E01](#)Human

[SwissProt: Q7TPD0](#)Mouse

**Important Note:**

This product as supplied is intended for research use only, not for use in human, therapeutic or diagnostic applications.

Picture:



Sample:

HeLa(Human) Cell Lysate at 30 ug

A431(Human) Cell Lysate at 30 ug

Primary: Anti- INTS3 (SL9766R) at 1/1000 dilution

Secondary: IRDye800CW Goat Anti-Rabbit IgG at 1/20000 dilution

Predicted band size: 118 kD

	Observed band size: 118 kD
--	----------------------------

[www.sunlongbiotech.com](http://www.sunlongbiotech.com)