



Rabbit Anti-C10orf4 antibody

SL9767R

Product Name:	C10orf4
Chinese Name:	10号染色体开放阅读框4抗体
Alias:	Chromosome 10 open reading frame 4; F26C11.1 like; FRA10AC1; FRA10AC1 protein; Fragile site 10q23.3; PRO2972; Protein FRA10AC1; Rare folic acid type fragile site FRA(10)(q23.3) candidate gene 1; F10C1 HUMAN.
Organism Species:	Rabbit
Clonality:	Polyclonal
React Species:	Human,Mouse,Rat,Chicken,Dog,Pig,Cow,Horse,Rabbit,Sheep,
Applications:	WB=1:500-2000ELISA=1:500-1000IHC-P=1:400-800IHC-F=1:400-800IF=1:50-200 (Paraffin sections need antigen repair) not yet tested in other applications. optimal dilutions/concentrations should be determined by the end user.
Molecular weight:	38kDa
Cellular localization:	The nucleus
Form:	Lyophilized or Liquid
Concentration:	1mg/ml
immunogen:	KLH conjugated synthetic peptide derived from human C10orf4:101-200/315
Lsotype:	IgG
Purification:	affinity purified by Protein A
Storage Buffer:	0.01M TBS(pH7.4) with 1% BSA, 0.03% Proclin300 and 50% Glycerol.
Storage:	Store at -20 °C for one year. Avoid repeated freeze/thaw cycles. The lyophilized antibody is stable at room temperature for at least one month and for greater than a year when kept at -20°C. When reconstituted in sterile pH 7.4 0.01M PBS or diluent of antibody the antibody is stable for at least two weeks at 2-4 °C.
PubMed:	PubMed
Product Detail:	The protein encoded by this gene is a nuclear phosphoprotein of unknown function. The 5' UTR of this gene is part of a CpG island and contains a tandem CGG repeat region that normally consists of 8-14 repeats but can expand to over 200 repeats. The expanded allele becomes hypermethylated and is not transcribed; however, an expanded repeat region has not been associated with any disease phenotype. This gene is found within the

rare FRA10A folate-sensitive fragile site. [provided by RefSeq, Mar 2010].

Subcellular Location:

Nuclear.

Tissue Specificity:

Ubiquitously expressed with higher expression in brain, heart, skeletal muscle, kidney and liver.

SWISS:

Q86Y37

Gene ID:

143384

Database links:

[Entrez Gene: 143384](#)Human

[SwissProt: Q86Y37](#)Human

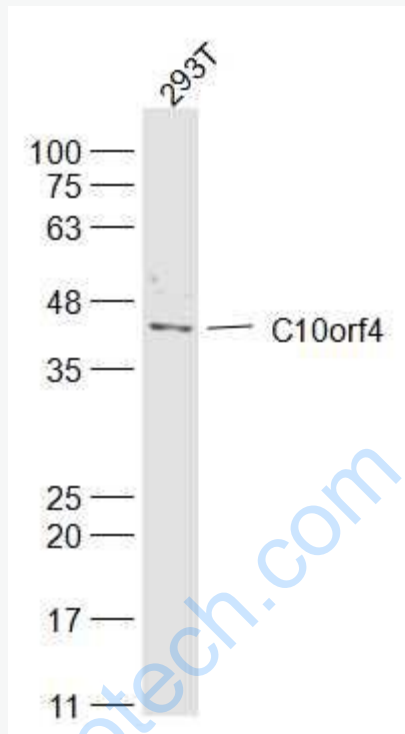
[SwissProt: Q8R0X2](#)Mouse

Important Note:

This product as supplied is intended for research use only, not for use in human, therapeutic or diagnostic applications.

www.surechembiotech.com

Picture:



Sample:

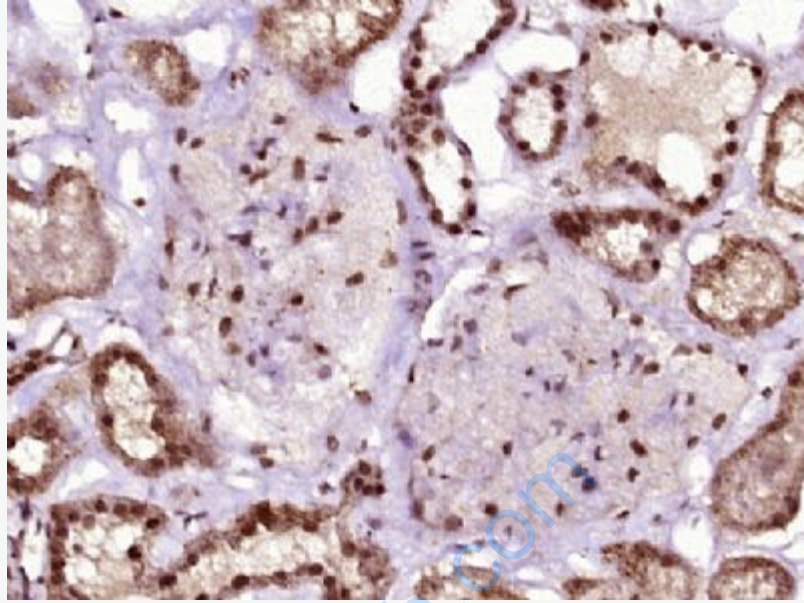
293T(Human) Cell Lysate at 40 ug

Primary: Anti-C10orf4 ? (SL9767R) at 1/300 dilution

Secondary: IRDye800CW Goat Anti-Rabbit IgG at 1/20000 dilution

Predicted band size: 38 kD

Observed band size: 38 kD



Paraformaldehyde-fixed, paraffin embedded (Human kidney); Antigen retrieval by boiling in sodium citrate buffer (pH6.0) for 15min; Block endogenous peroxidase by 3% hydrogen peroxide for 20 minutes; Blocking buffer (normal goat serum) at 37°C for 30min; Antibody incubation with (C10orf4) Polyclonal Antibody, Unconjugated (SL9767R) at 1:400 overnight at 4°C, followed by operating according to SP Kit(Rabbit) (sp-0023) instructions and DAB staining.