



## Rabbit Anti-C10orf47 antibody

SL9768R

<b>Product Name:</b>	C10orf47
<b>Chinese Name:</b>	10号染色体开放阅读框47抗体
<b>Alias:</b>	C10orf47; Chromosome 10 open reading frame 47; CJ047_HUMAN; Hypothetical protein LOC254427; MGC35403; Uncharacterized protein C10orf47.
<b>Organism Species:</b>	Rabbit
<b>Clonality:</b>	Polyclonal
<b>React Species:</b>	Human,Mouse,Rat,Pig,Horse,Rabbit,Sheep,
<b>Applications:</b>	WB=1:500-2000ELISA=1:500-1000IHC-P=1:400-800IHC-F=1:400-800IF=1:50-200 (Paraffin sections need antigen repair) not yet tested in other applications. optimal dilutions/concentrations should be determined by the end user.
<b>Molecular weight:</b>	46kDa
<b>Cellular localization:</b>	The nucleuscytoplasmicThe cell membraneExtracellular matrixSecretory protein
<b>Form:</b>	Lyophilized or Liquid
<b>Concentration:</b>	1mg/ml
<b>immunogen:</b>	KLH conjugated synthetic peptide derived from human C10orf47:351-435/435
<b>Lsotype:</b>	IgG
<b>Purification:</b>	affinity purified by Protein A
<b>Storage Buffer:</b>	0.01M TBS(pH7.4) with 1% BSA, 0.03% Proclin300 and 50% Glycerol.
<b>Storage:</b>	Store at -20 °C for one year. Avoid repeated freeze/thaw cycles. The lyophilized antibody is stable at room temperature for at least one month and for greater than a year when kept at -20°C. When reconstituted in sterile pH 7.4 0.01M PBS or diluent of antibody the antibody is stable for at least two weeks at 2-4 °C.
<b>PubMed:</b>	<a href="#">PubMed</a>
<b>Product Detail:</b>	C10orf47 is a 435 amino acid protein that exists as two alternatively spliced isoforms that are encoded by a gene located on human chromosome 10. Spanning nearly 135 million base pairs, chromosome 10 makes up approximately 4.5% of total DNA in cells and encodes nearly 1,200 genes. Several protein-coding genes, including those that encode for chemokines, cadherins, excision repair proteins, early growth response factors (Egrs) and fibroblast growth receptors (FGFRs), are located on chromosome 10.

Defects in some of the genes that map to chromosome 10 are associated with Charcot-Marie Tooth disease, Jackson-Weiss syndrome, Usher syndrome, nonsyndromic deafness, Wolman's syndrome, Cowden syndrome, multiple endocrine neoplasia type 2 and porphyria.

**SWISS:**  
Q86WR7

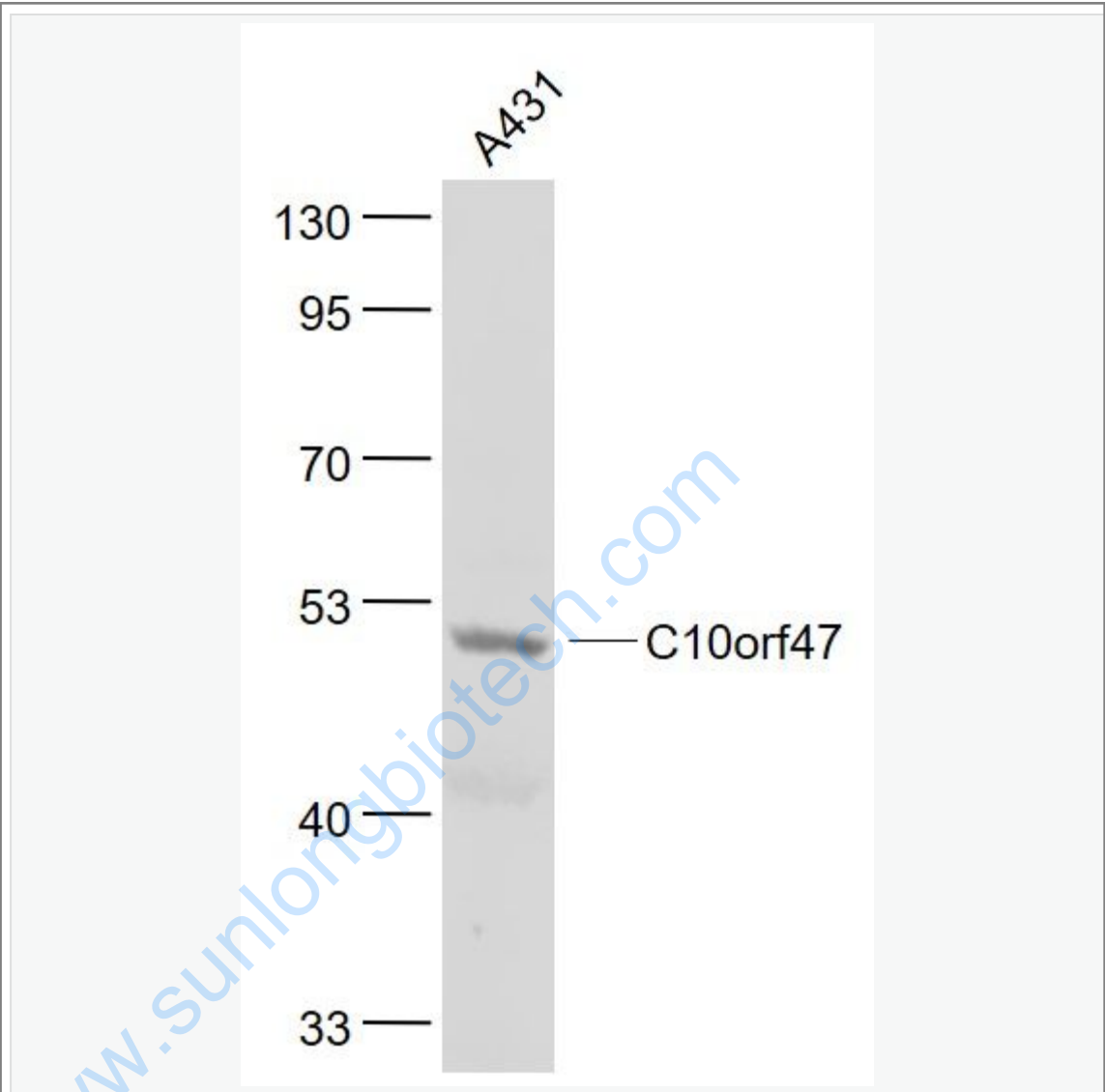
**Gene ID:**  
254427

**Database links:**

**Important Note:**  
This product as supplied is intended for research use only, not for use in human, therapeutic or diagnostic applications.

[www.sunlongbiotech.com](http://www.sunlongbiotech.com)

Picture:



Sample:

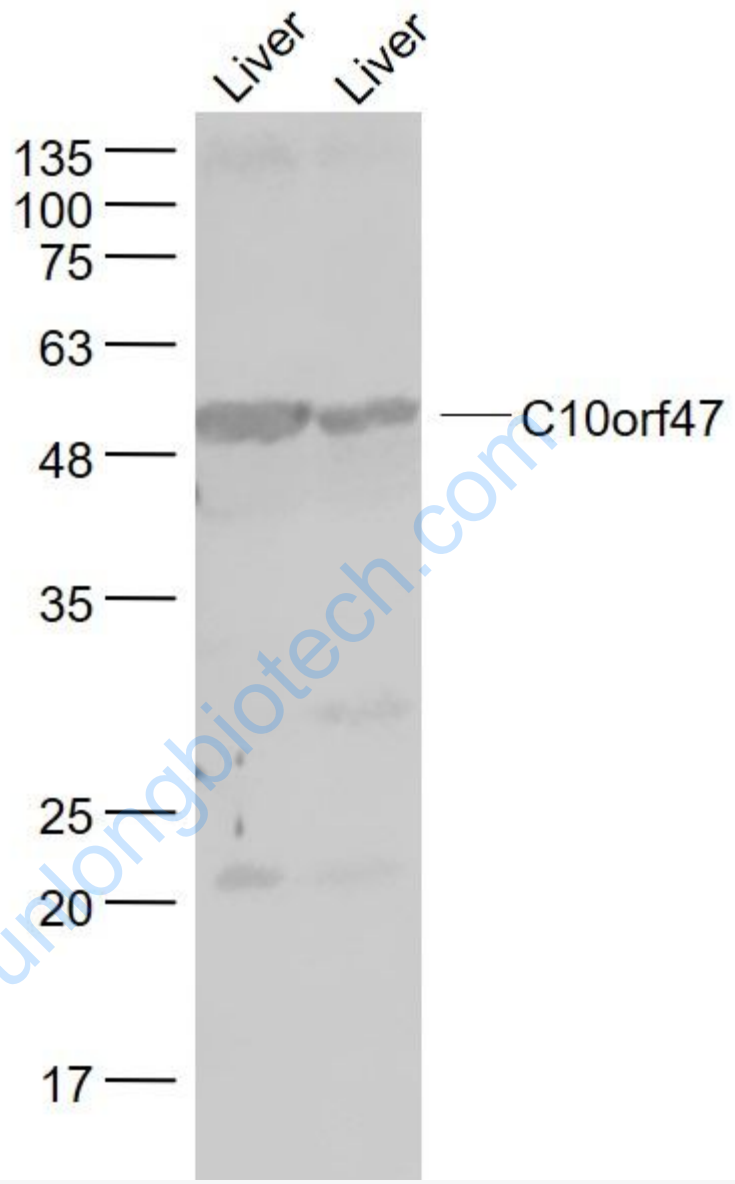
A431(Human) Cell Lysate at 30 ug

Primary: Anti- C10orf47 (SL9768R) at 1/1000 dilution

Secondary: IRDye800CW Goat Anti-Rabbit IgG at 1/20000 dilution

Predicted band size: 46 kD

Observed band size: 46 kD



Sample:

Liver (Mouse) Lysate at 40 ug

Liver (Rat) Lysate at 40 ug

Primary: Anti- C10orf47 (SL9768R) at 1/1000 dilution

Secondary: IRDye800CW Goat Anti-Rabbit IgG at 1/20000 dilution

Predicted band size: 46 kD

	Observed band size: 52 kD
--	---------------------------

[www.sunlongbiotech.com](http://www.sunlongbiotech.com)